

NOTES

Reprocessing of the magnetic data for Yukon was performed between November 2016 and March 2017. Aeromagnetic data (available through NRCan Geoscience Data Repository for Geophysical Data) were compiled, data of different resolutions were merged, and a series of images individually levelled for each map sheet were produced. For each 1:250 000-scale map, the following magnetic derivative maps were produced:

- 1.Residual Total Magnetic Field;
- 2.Reduced-to-Pole Magnetic Field (RTP);
- 3.First Vertical Derivative of the Reduced-to-Pole Magnetic Field (RTP_VD); and
- 4.Tilt Derivative of the Reduced-to-Pole Magnetic Field (RTP_TDR).

These maps are provided both as GeoTiff and Geosoft grid files. Colour ramps/legends are provided for each map.

The Yukon Geological Survey created georeferenced *.pdf maps of the shaded relief colour contour products for each 1:250 000 map sheet.

REFERENCES

Miles, W., Saltus, R., Hayward, N. and Oneschuk, D., 2015. Alaska and Yukon Magnetic Compilation, Residual total magnetic field. Geological Survey of Canada, Open File 7862.

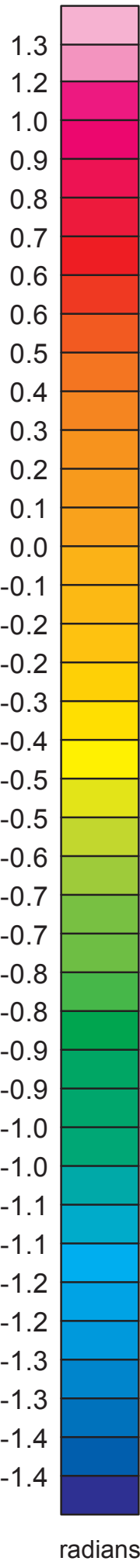
RECOMMENDED CITATION

Aurora Geosciences Ltd. and Bruce, J.O., 2017. Tilt derivative of the reduced-to-pole magnetic field, shaded colour contour map (NTS 115I). In: Reprocessing of Yukon magnetic data for NTS 115I. Yukon Geological Survey, Open File 2017-38, scale 1:250 000, sheet 4 of 4.

Any revisions or additional geological information known to the user would be welcomed by the Yukon Geological Survey.

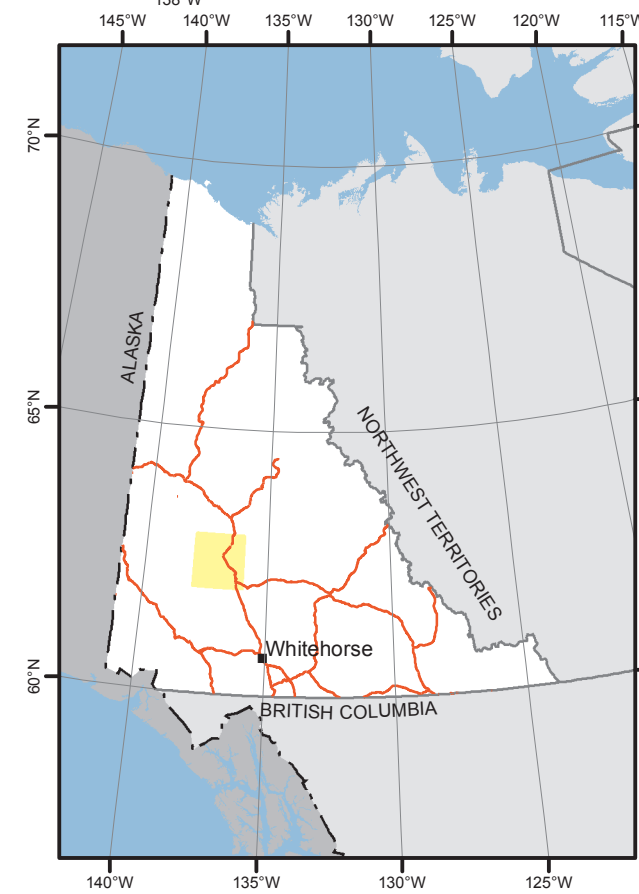
Paper copies of this map and the accompanying report may be obtained from the Yukon Geological Survey, Energy, Mines and Resources, Government of Yukon, Room 102-300 Main St., Whitehorse, Yukon, Y1A 2B5. Ph. 867-667-3201, Email geology@gov.yk.ca.

A digital PDF (Portable Document File) file of this map, and available data, can be downloaded free of charge from the Yukon Geological Survey website: <http://www.geology.gov.yk.ca>.



radians

- community
- road
- drainage
- watercourse
- waterbody

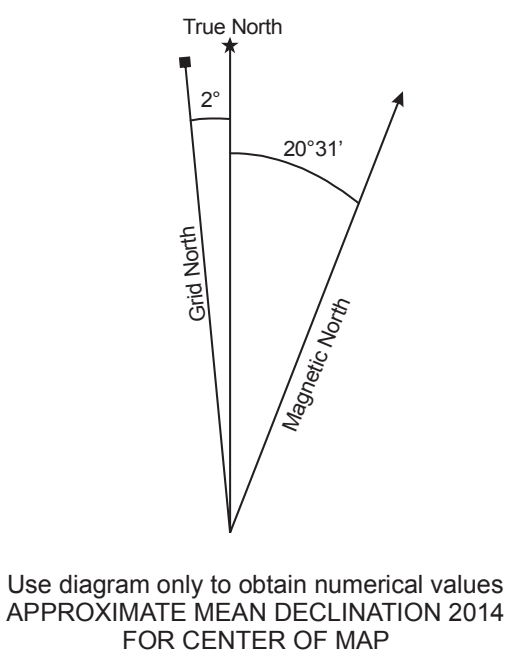


1:250 000-scale topographic
base data produced
by
CENTRE FOR TOPOGRAPHIC
INFORMATION,
NATURAL RESOURCES CANADA

ONE THOUSAND METRE GRID
Universal Transverse Mercator Projection
North American Datum 1983
Zone 8

TILT DERIVATIVE OF THE
REDUCED-TO-POLE MAGNETIC FIELD
CARMACKS (NTS 115I)
YUKON

SCALE 1:250 000



115O STEWART RIVER	115P MCQUESTEN	105M MAYO
115J STEVENS RIDGE	THIS MAP	105L GLENLYON
115G KLUANE LAKE	115H AISHIHIK LAKE	105E LAKE LABERGE

Tilt Derivative of the Reduced-to-Pole Magnetic Field
Shaded Colour Contour Map (NTS 115I)

(1:250 000 scale)

by
Aurora Geosciences Ltd.
and
J.O. Bruce

Yukon Geological Survey
Energy, Mines and Resources
Government of Yukon

Open File 2017-38
Sheet 4 of 4