

### NOTES

Reprocessing of the magnetic data for Yukon was performed between November 2016 and March 2017. Aeromagnetic data (available through NRCan Geoscience Data Repository for Geophysical Data) were compiled, data of different resolutions were merged, and a series of images individually levelled for each map sheet were produced. For each 1:250 000-scale map, the following magnetic derivative maps were produced:

- 1.Residual Total Magnetic Field;
- 2.Reduced-to-Pole Magnetic Field (RTP);
- 3.First Vertical Derivative of the Reduced-to-Pole Magnetic Field (RTP\_VD); and
- 4.Tilt Derivative of the Reduced-to-Pole Magnetic Field (RTP\_TDR).

These maps are provided both as GeoTiff and Geosoft grid files. Colour ramps/legends are provided for each map.

The Yukon Geological Survey created georeferenced \*.pdf maps of the shaded relief colour contour products for each 1:250 000 map sheet.

### REFERENCES

Geological Survey of Canada, 2017. Canadian Aeromagnetic Data Base, Airborne Geophysics Section, Natural Resources Canada. Datasets: Beaufort Sea (1985) Beaufort Sea, Yukon (1985)

Miles, W., Saltus, R., Hayward, N. and Oneschuk, D., 2015. Alaska and Yukon Magnetic Compilation, Residual total magnetic field. Geological Survey of Canada, Open File 7862.

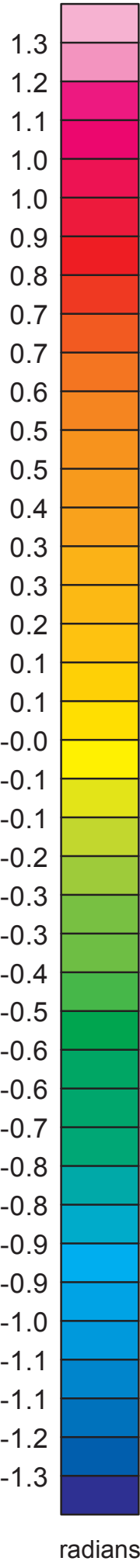
### RECOMMENDED CITATION

Aurora Geosciences Ltd. and Bruce, J.O., 2017. Tilt derivative of the reduced-to-pole magnetic field, shaded colour contour map (NTS 117C). In: Reprocessing of Yukon magnetic data for NTS 117C. Yukon Geological Survey, Open File 2017-58, scale 1:250 000, sheet 4 of 4.

Any revisions or additional geological information known to the user would be welcomed by the Yukon Geological Survey.

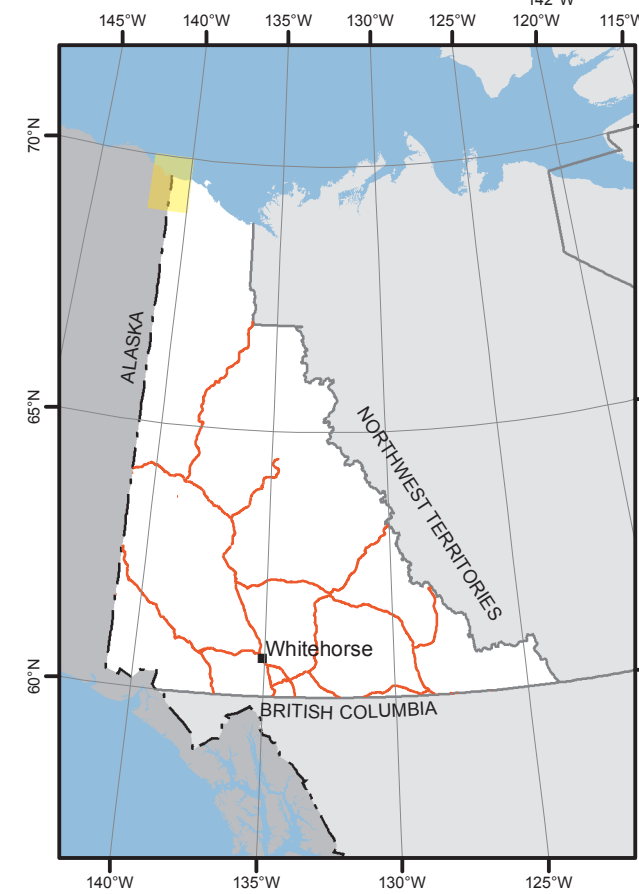
Paper copies of this map and the accompanying report may be obtained from the Yukon Geological Survey, Energy, Mines and Resources, Government of Yukon, Room 102-300 Main St., Whitehorse, Yukon, Y1A 2B5. Ph. 867-667-3201, Email [geology@gov.yk.ca](mailto:geology@gov.yk.ca).

A digital PDF (Portable Document File) file of this map, and available data, can be downloaded free of charge from the Yukon Geological Survey website: <http://www.geology.gov.yk.ca>.



radians

- community
- road
- drainage
- watercourse
- waterbody

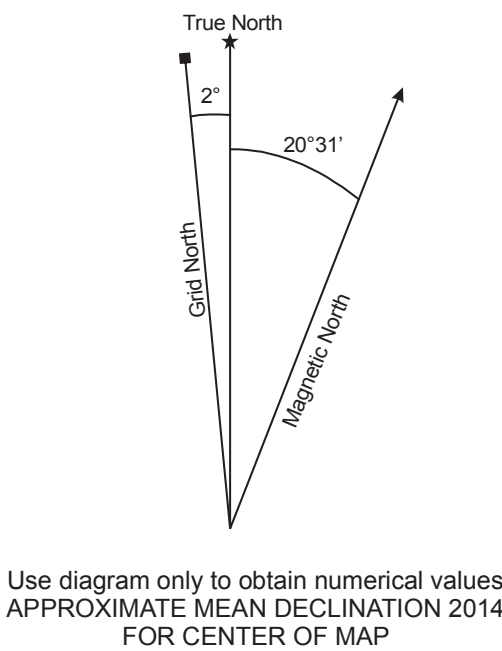


1:250 000-scale topographic base data produced by CENTRE FOR TOPOGRAPHIC INFORMATION, NATURAL RESOURCES CANADA

ONE THOUSAND METRE GRID Universal Transverse Mercator Projection North American Datum 1983 Zone 7

## TILT DERIVATIVE OF THE REDUCED-TO-POLE MAGNETIC FIELD DEMARCATION POINT (NTS 117C) YUKON

SCALE 1:250 000



ALASKA	117F	117E
ALASKA	<b>THIS MAP</b>	117D HERSCHEL ISLAND
ALASKA	117B DAVIDSON MOUNTAINS	117A BLOW RIVER

Yukon Geological Survey  
Energy, Mines and Resources  
Government of Yukon

Open File 2017-58  
Sheet 4 of 4

## Tilt Derivative of the Reduced-to-Pole Magnetic Field Shaded Colour Contour Map (NTS 117C)

(1:250 000 scale)

by  
Aurora Geosciences Ltd.  
and  
J.O. Bruce