

STRIPPING PROGRAM

Stripping will commence on the right limit area covered with giants 1 to 8 inclusive, 13-14-18 and 19. Drainage from the area below the pumps will be established by first operating giants 8 and 13 and then extending downstream using giants progressively in that direction.

When the area covered by giants 1 to 8 inclusive has been stripped to grade, the tailings opposite outlet "D" will be blown onto that area by giants advancing from outlets "D" and "E". When it is finished giant 9 will be set to strip the underlying muck.

The tailings along the left limit opposite outlets "D", "E", and "F" will be stacked by giants operating from outlet "F" to form a narrow ridge between lines "X" and "Y". When this is finished giants 10-11 12-15 and 16 will be set to strip muck. Giants 12 and 15 will first work on the area between tailings at "Y" and the main pipe line, but when giants 10-11 and 16 have completed their respective areas,

giants 9-12 and 15 will advance blowing the tailings from between "X" and "Y" onto stripped ground and then remove the underlying muck.

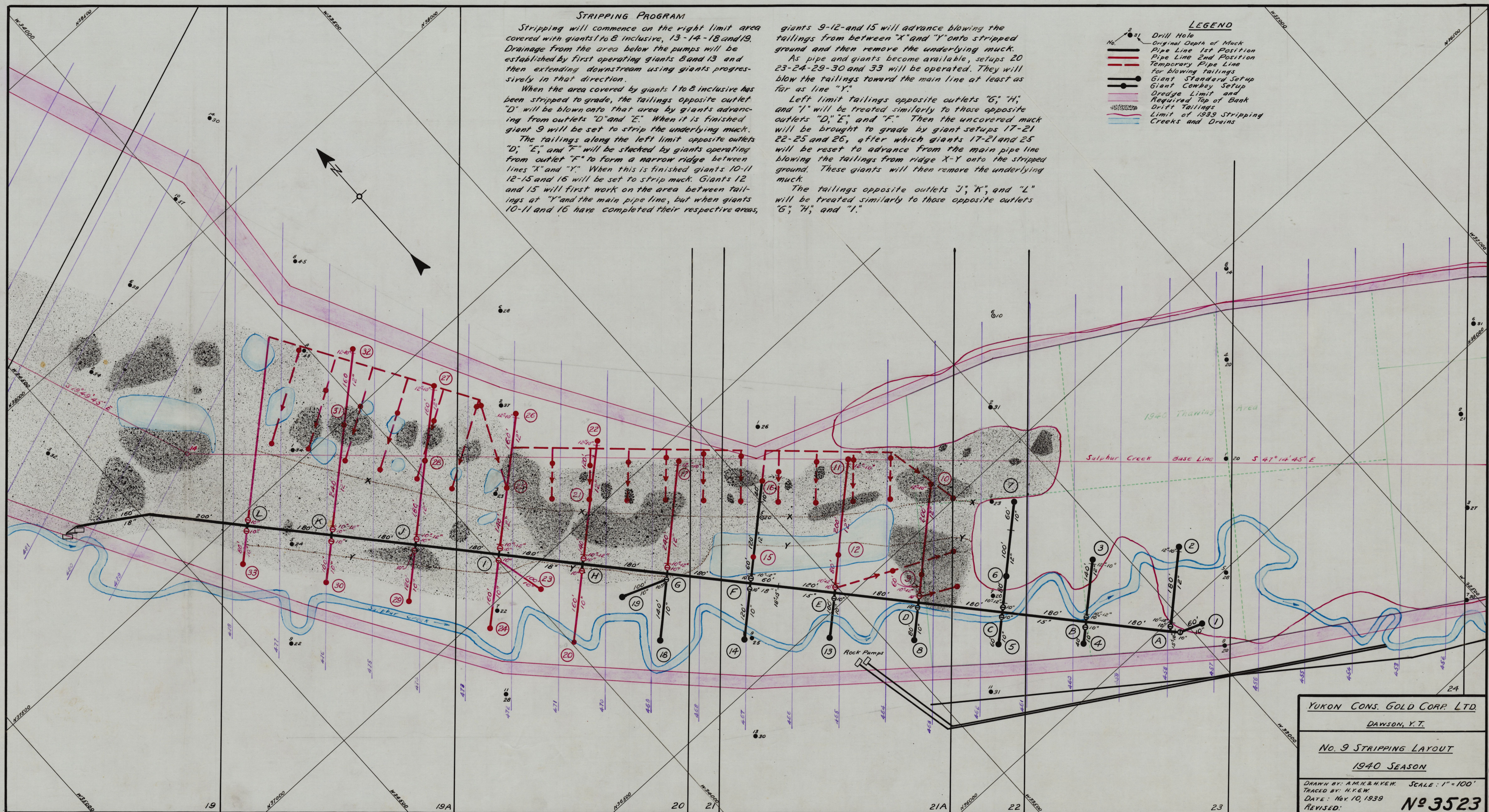
As pipe and giants become available, setups 20 23-24-29-30 and 33 will be operated. They will blow the tailings toward the main line at least as far as line "Y".

Left limit tailings opposite outlets "G", "H", and "I" will be treated similarly to those opposite outlets "D", "E", and "F". Then the uncovered muck will be brought to grade by giant setups 17-21 22-25 and 26, after which giants 17-21 and 25 will be reset to advance from the main pipe line blowing the tailings from ridge X-Y onto the stripped ground. These giants will then remove the underlying muck.

The tailings opposite outlets "J", "K", and "L" will be treated similarly to those opposite outlets "G", "H", and "I."

LEGEND

- No. 1 Drill Hole
- Original Depth of Muck
- Pipe Line 1st Position
- Pipe Line 2nd Position
- Temporary Pipe Line
- Line for Blowing Tailings
- Giant Standard Setup
- Giant Cowboy Setup
- Dredge Limit and Required Top of Bank
- Drift Tailings
- Limit of 1939 Stripping
- Creeks and Drains



YUKON CONS. GOLD CORP. LTD.	
DAWSON, Y. T.	
No. 9 STRIPPING LAYOUT	
1940 SEASON	
Drawn by: A.M.K. & H.V.E.W.	SCALE: 1" = 100'
Traced by: H.V.E.W.	
DATE: Nov. 10, 1939	
REVISED:	No 3523