

BASE LINE SURVEY

OF
HENDERSON CREEK

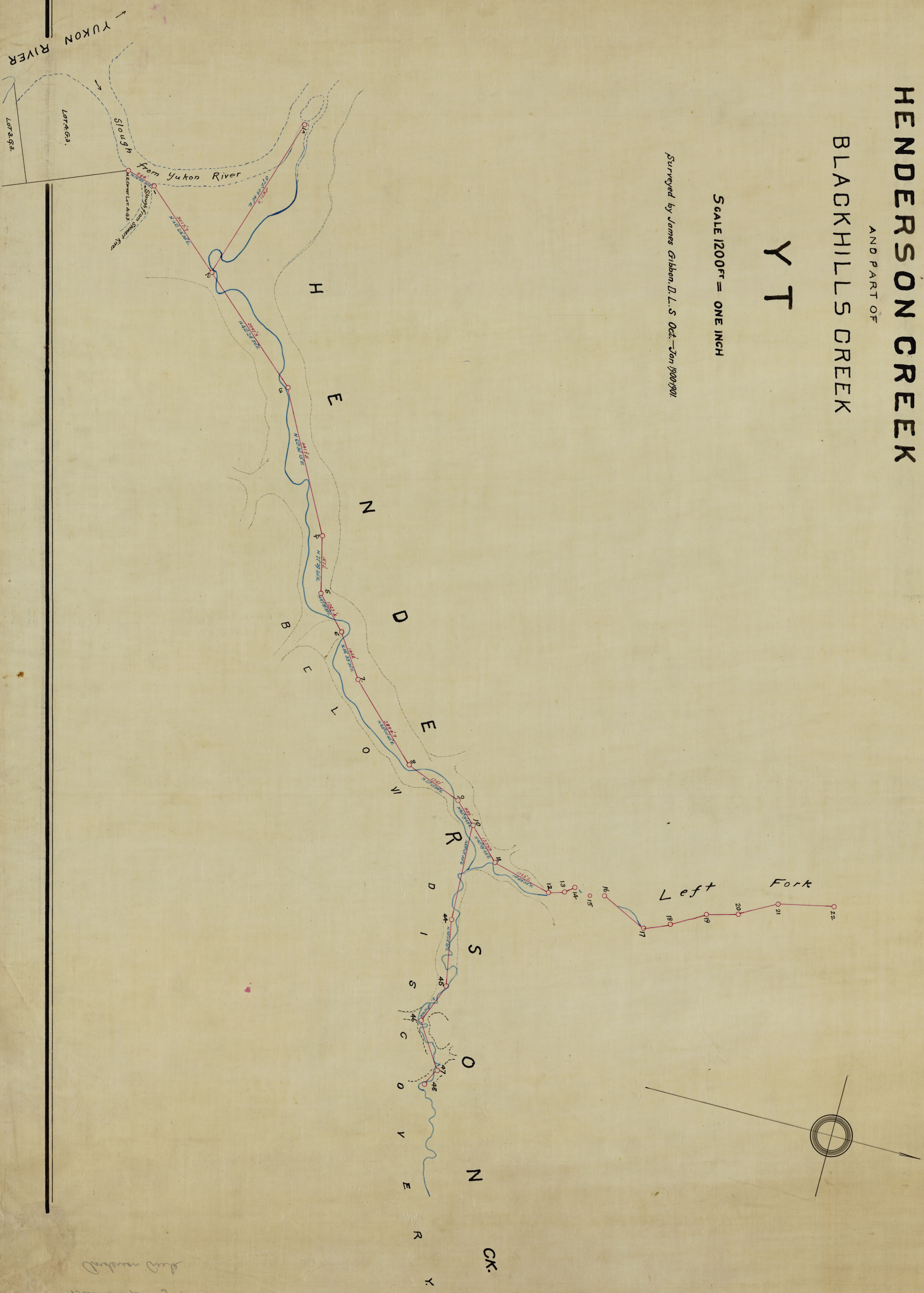
AND PART OF

BLACKHILLS CREEK

Y T

SCALE 1200^{ft} = ONE INCH

Surveyed by James Gibbon, D. L. S. Oct. - Jan 1900/1901.



Handwritten notes:
Black Hills Creek
Base line survey
1900
1901

e011079543