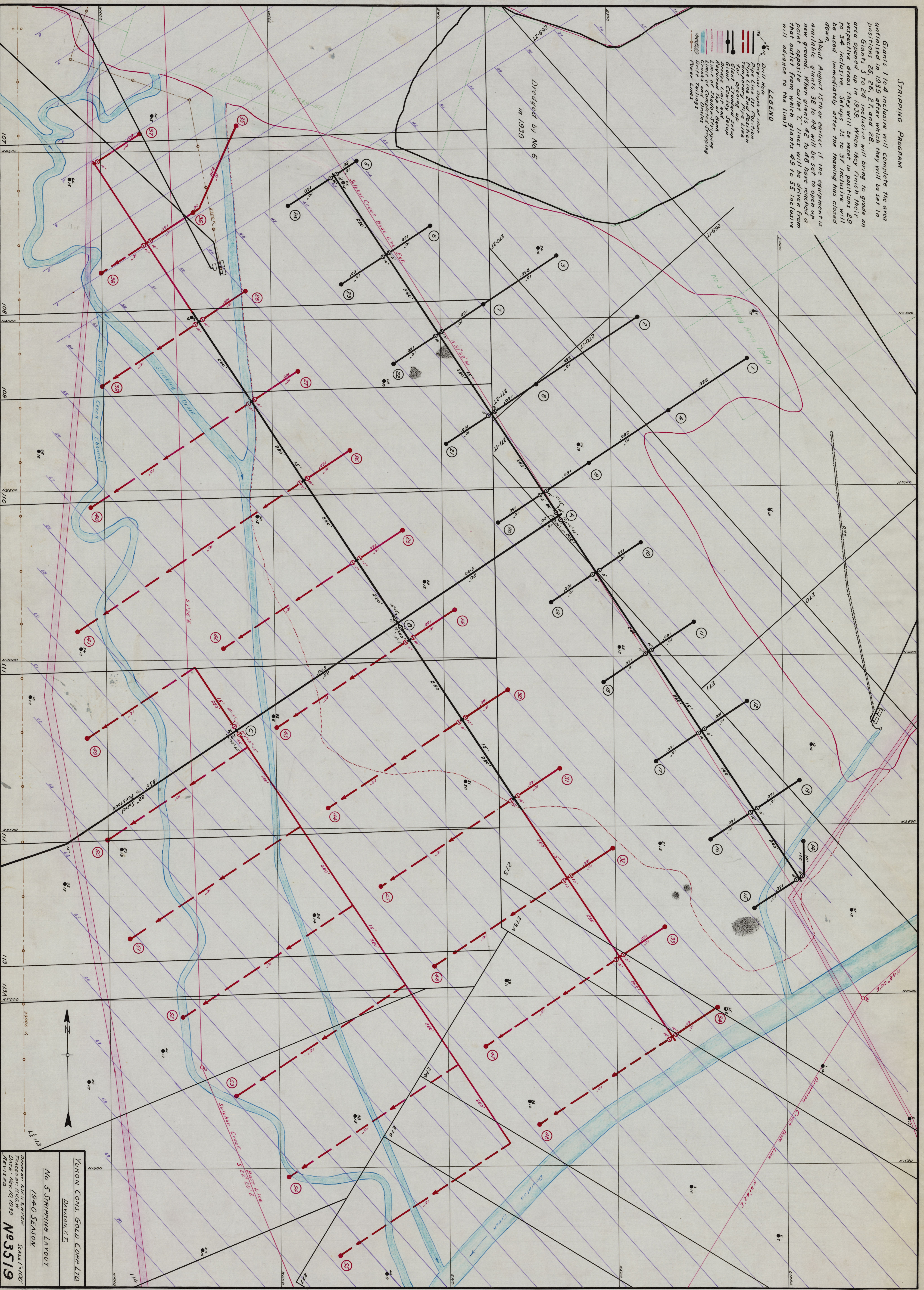


STRIPPING PROGRAM

Giants 1 to 4 inclusive will complete the area unstripped in 1939 after which they will be set in positions 25, 26, 27 and 28.
Giants 5 to 24 inclusive will bring to grade an area opened up in 1935. When they finish their respective areas they will be reset in positions 29 to 34 inclusive. Sets 35 to 37 inclusive will be used immediately after the thawing has closed down. About August 15th or earlier if the equipment is available giants 38 to 48 will be set to open up new ground. When giants 42 to 48 have reached a point opposite the earlier C lines they will be driven from their original positions to the new positions 49 to 55 inclusive will advance to the limit.

- LEGEND
- Drill Hole
 - Original Cuts or Muck
 - Pipe Line Strip Position
 - Temporary Pipe Line
 - Strip Position
 - Limit of Shallow Stripping
 - Limit of Complete Stripping
 - Drift Tailings
 - Power Lines



YUKON CONS. GOLD CORP. LTD.
DANIMON, Y.T.
No 5 STRIPPING LAYOUT
1940 SEASON
SCALE 1"=100'
DRAWN BY: AMER & MATHW
CHECKED BY: HIGGINS
DATE: Nov 10 1939
REVISED
N 3519