

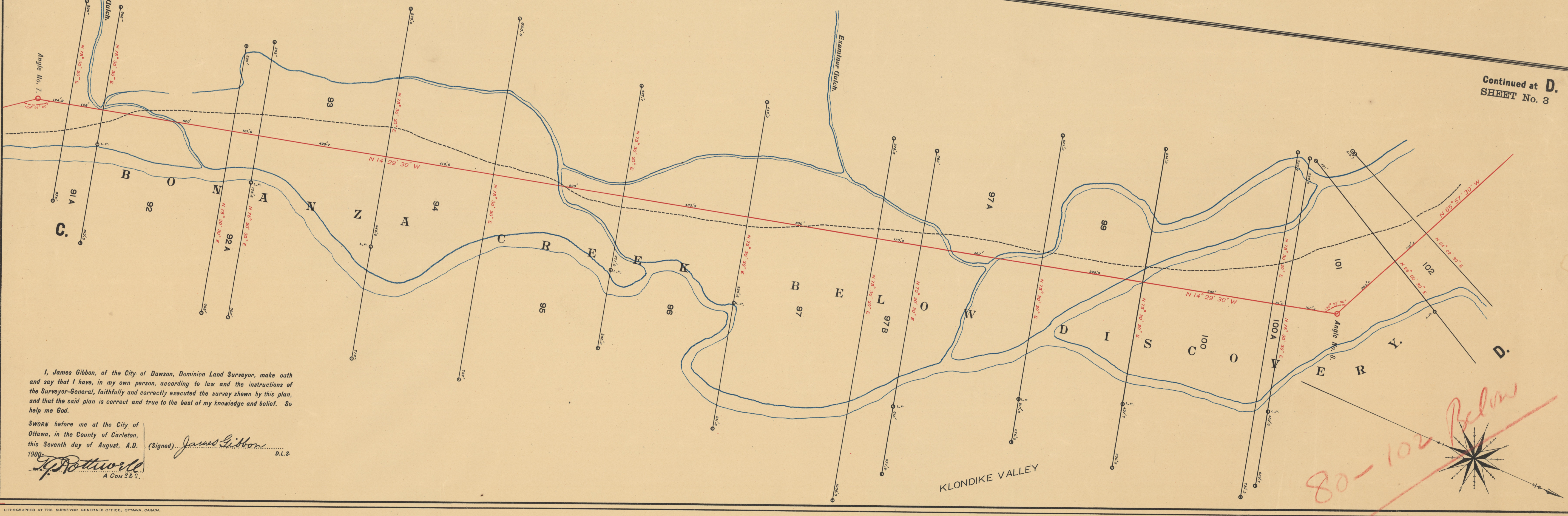
PART No. 3



PLAN OF  
Placer Mining Claims  
on part of  
**BONANZA CREEK.**  
in the  
KLONDIKE MINING DIVISION  
of the  
**Yukon Territory**

Scale: 200 feet = 1 inch.

PART No. 4



Continued at D.  
SHEET No. 3

I, James Gibbon, of the City of Dawson, Dominion Land Surveyor, make oath and say that I have, in my own person, according to law and the instructions of the Surveyor-General, faithfully and correctly executed the survey shown by this plan, and that the said plan is correct and true to the best of my knowledge and belief. So help me God.

SWORN before me at the City of Ottawa, in the County of Carleton, this Seventh day of August, A.D. 1900.

(Signed) *James Gibbon* D.L.S.  
*J. Pottsworld*  
A.C.W.S.S.

80-102 Below