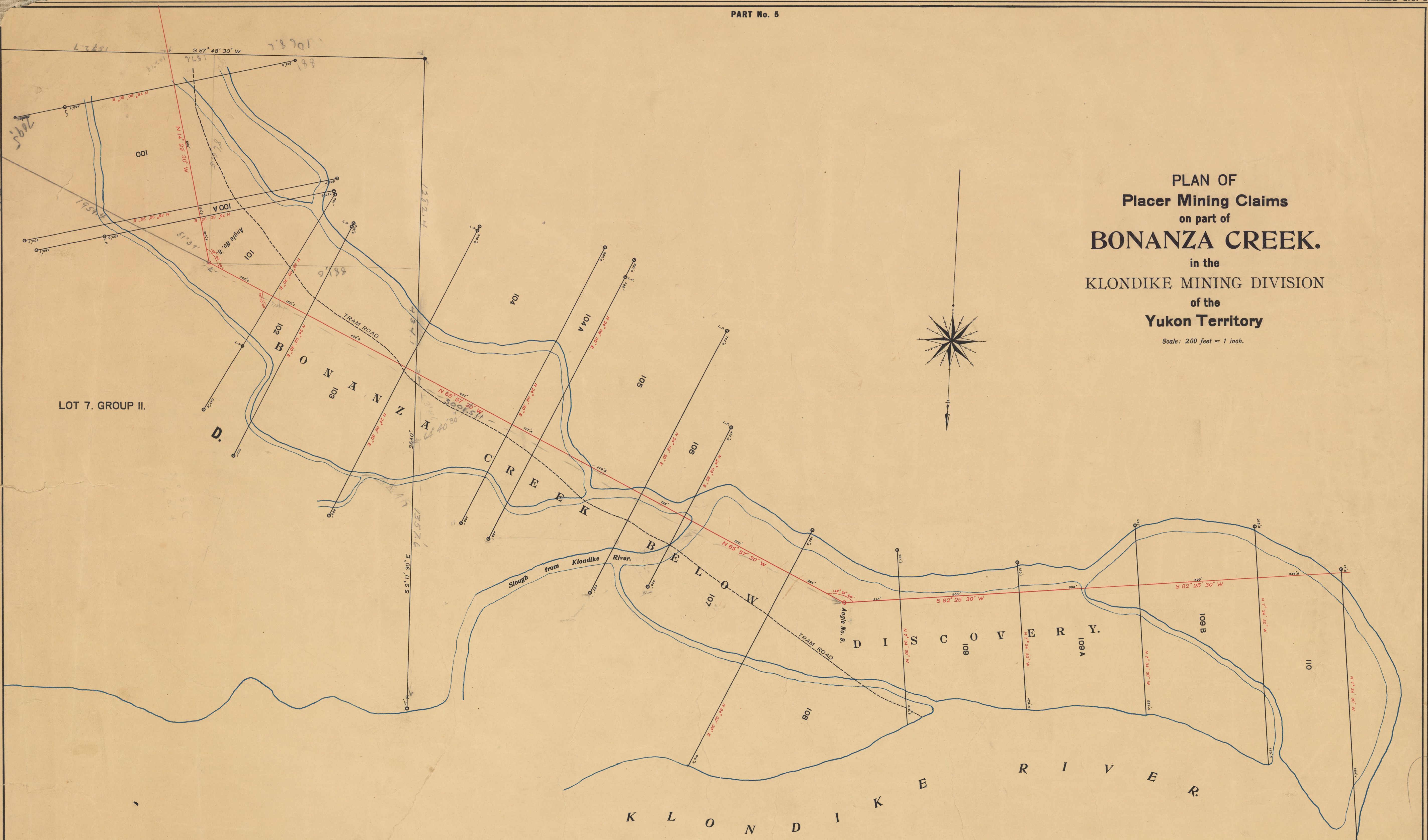


PLAN OF
 Placer Mining Claims
 on part of
BONANZA CREEK.
 in the
 KLONDIKE MINING DIVISION
 of the
Yukon Territory

Scale: 200 feet = 1 inch.



AB CDE F B C C O S S 587 45607890

I, James Gibbon, of the City of Dawson, Dominion Land Surveyor, make oath and say that I have, in my own person, according to law and the instructions of the Surveyor-General, faithfully and correctly executed the survey shown by this plan, and that the said plan is correct and true to the best of my knowledge and belief. So help me God.

Sworn before me at the City of Ottawa, in the County of Carleton, this Seventh day of August, A.D. 1900.

(Signed) *James Gibbon* D.L.S.

H. Rottwell
 A. Comm. & S.

YUKON CONS. GOLD FIELDS
 Office Copy Return to Case A
 Sect 5.

V.G. Co. 512

LITHOGRAPHED AT THE SURVEYOR GENERAL'S OFFICE, OTTAWA, CANADA.

D 503

e011157609