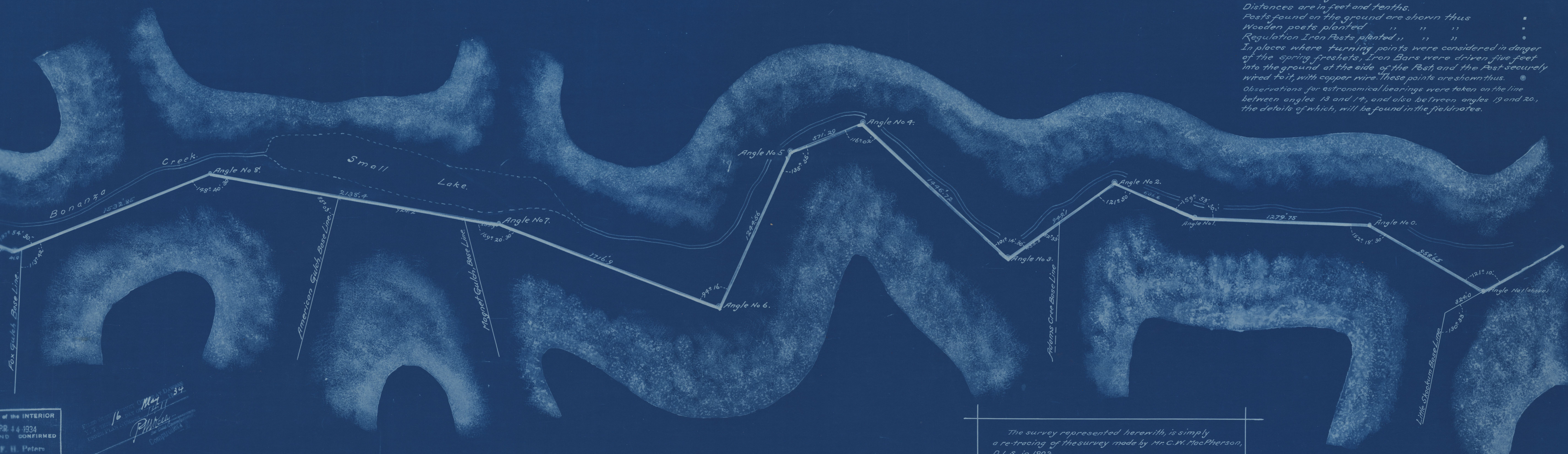


NOTE:
 Surveyed lines and measured distances are in red.
 Previous surveys and bearings are in black.
 Bearings are astronomical and expressed in degrees and minutes.
 Observed bearings are in blue.
 Distances are in feet and tenths.
 Posts found on the ground are shown thus:
 Wooden posts planted " " " "
 Regulation Iron Posts planted " " " "
 In places where turning points were considered in danger of the spring freshets, Iron Bars were driven five feet into the ground at the side of the Post, and the Post securely wired to it, with copper wire. These points are shown thus:
 Observations for astronomical bearings were taken on the line between angles 13 and 14, and also between angles 19 and 20, the details of which, will be found in the field notes.



DEPARTMENT OF THE INTERIOR
 OTTAWA ... APR. 14 1934
 APPROVED AND CONFIRMED
 F. H. PATRICK
 SURVEYOR GENERAL.

16
 May 34
 P. W. ...
 ...

The survey represented herewith, is simply a re-tracing of the survey made by Mr. C. W. MacPherson, D.L.S., in 1902.

DEPARTMENT OF THE INTERIOR
 SURVEYOR GENERAL
 ...

1933. Scale 300 Ft = One Inch.

e011157636