

PLAN
of Survey of
Hydraulic Concession applied for by E. Ward. Smith
on
Flat Creek
Y.T.

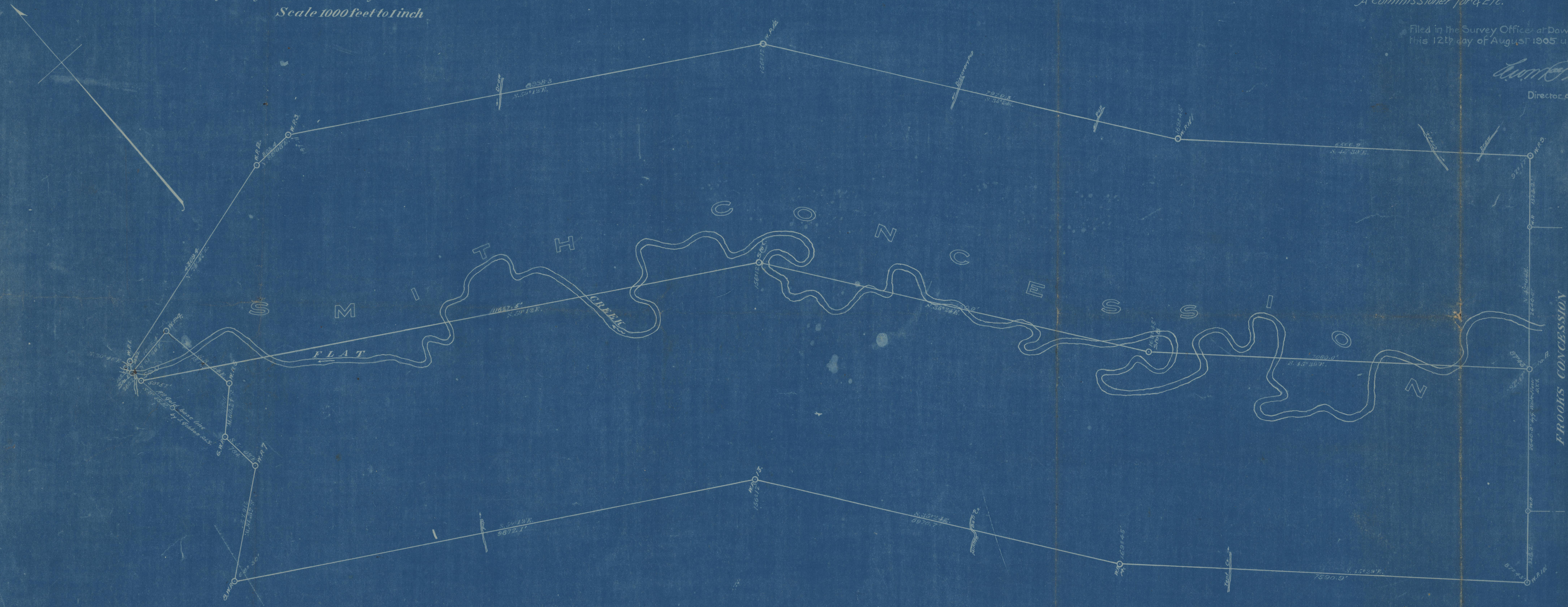
Surveyed July 17th. to 24th 1905 by C.S.W. Barwell D.L.S.
 Scale 1000 feet to 1 inch

NOTE
 Surveyed lines and measured distances are in red
 Unsurveyed lines calculated distances and bearings and previous surveys are in black
 Bearings are astronomical and expressed in degrees and minutes
 Observed bearings are in blue
 Distances are in feet and tenths
 Posts found on the ground are shown thus ○
 Wooden posts planted are shown thus ○
 The bearings of this survey are derived from the All Gold Cr. Base Line by J. Gibbon D.L.S.

Affidavit
 I, Charles Sedley William Barwell of Dawson Dominion Land Surveyor make oath and say that I have in my own proper person according to law and the instructions of the Surveyor General faithfully and correctly executed the survey shown by this plan and that this plan is correct and true to the best of my knowledge and belief.
 Chas. S. W. Barwell
 D.L.S.
 Sworn before me at Dawson Y.T. this 11th day of August 1905
 C. C. Gray
 A Commissioner for & Etc.

Filed in the Survey Office at Dawson Y.T. this 12th day of August 1905 under No 741.

Edward F. Johnson
 Director of Surveys Y.T.



Examined and approved
 August 8th 1905
Edward F. Johnson

Director of Surveys Y.T.