

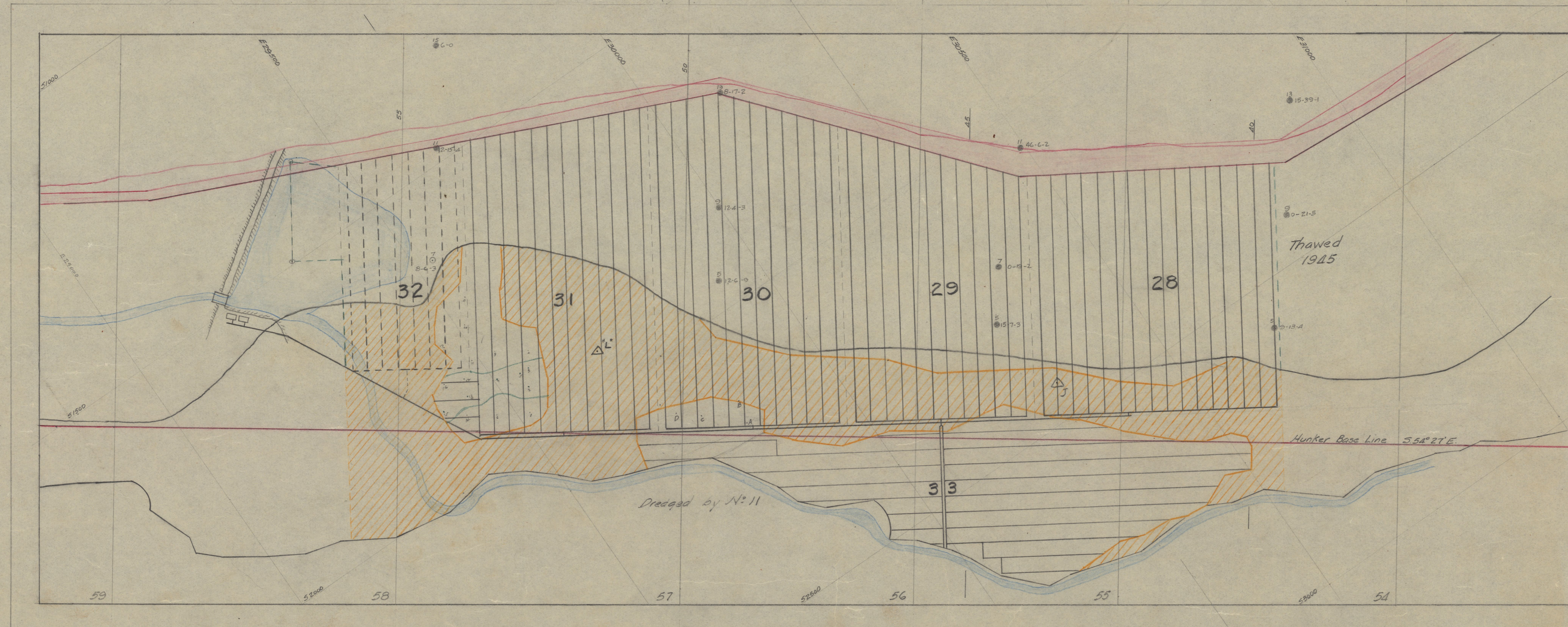
Note - Virgin + Tailings in Blocks 30-31-32 were calculated separately and Totals were combined in Table below. - only Virgin depths shown.

Block 30					
	Area	Points	Depth	Footage	Cu Yds
Virgin	1488	607	27	13961	124017
Tailings	1042	43	20	1204	10170
	2530	650	27	15165	134187

Block 31					
	Area	Points	Depth	Footage	Cu Yds
Virgin	8449	346	27	4970	42106
Tailings	4430	181	30	5068	44300
	12879	527	27	11988	106406

Block 32					
	Area	Points	Depth	Footage	Cu Yds
Virgin	7833	238	20	4784	38857
Tailings	773	32	30	896	7730
	8606	270	20	5680	46587

The Frozen strip on the Right Limit of the Natural Thaw in Blocks 28-29-30 was treated as Virgin Ground.



UNIT No.	AREA Sq. Yds.	No. OF POINTS	AVERAGE DEPTH			TOTAL FOOTAGE	VOLUME Cu Yds.
			MUCK	GR.	Dk.		
28	17148	700	7	15	4	16800	148616
29	13910	568	8	13	3	12496	111280
30	15936	650	11	9	5	15165	134557
31	12899	527	8	10	4	11988	106406
32	6606	270	5	11	4	5180	46617
33	18097	738		28	2	20664	180970
Total	84596	3453				82293	728446
Natural Thaw made Accessible							325220
Grand Total							1053666
Probable driving rate per 9 hr. shift							100ft.
Probable driving season May 10 to Aug 15							98 days
Driving crew required Feet ÷ (days x rate)							9 men.
Order in which units will be driven - 28-33-29-30-31-32							
Point spacing 16 centers throughout							

- LEGEND**
- ① 5-10 Drill Hole
 - Depth of Gravel
 - - - Depth of remaining Muck
 - Pipe Line 1st Position
 - - - Pipe Line 2nd Position
 - - - Unit Boundary
 - - - Dredge Limit and
 - Required Top of Bank
 - Actual Top of Bank
 - /// Natural Thaw
- Thawed Frozen Part Thawed

YUKON CONS. GOLD CORP. LTD.
DAWSON, Y.T.

No. 11 THAWING LAYOUT
1946 SEASON

DRAWN AMN. PSC. SCALE 1" = 100'
 TRACED
 DATE Jan 15-46
 CHECKED No.

Middle Hunker 1946 Layout
 1" = 100'

DIETZGEN EXCELLO U.S.A.

DIETZGEN EXCELLO MADE

e011156498