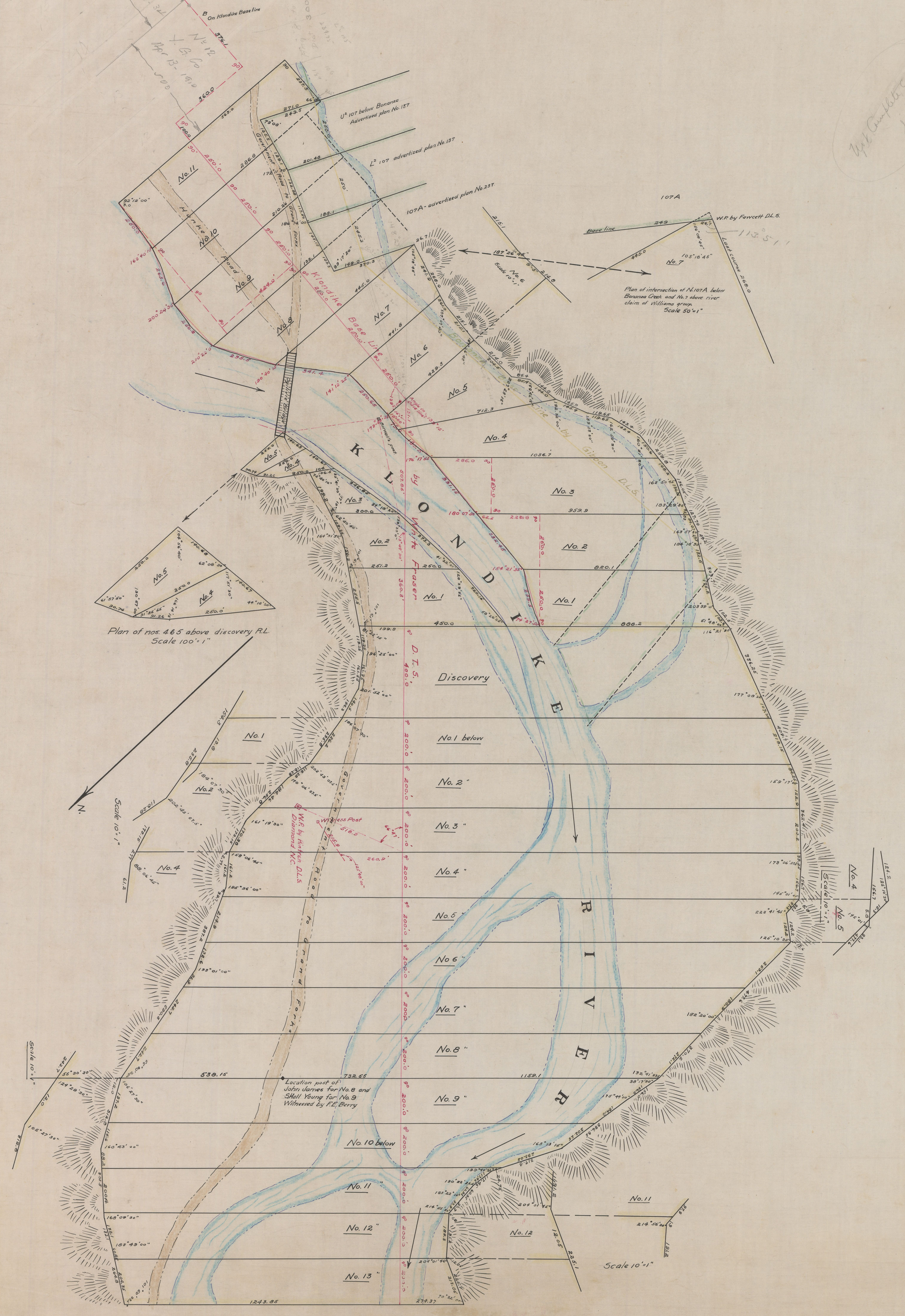


**PLAN**  
 OF  
 THE "COL. WILLIAMS" GROUP OF CLAIMS  
 ON THE  
 KLONDIKE RIVER  
 SCALE 200' = 1"  
 SURVEYED SEPT. 1902 BY G.W. FRASER D.T.S.

This group includes Discovery on Klondike river and nos. 1, 2, 3, 4, 5, 6, 7, 8, 9, 10, 11, 12 and 13, below all creek claims and also River claims.  
 above Discovery and adjacent thereto nos. 1, 2, 3, 4, 5, 6, 7, 8, 9, 10 and 11 on the left limit and nos. 1, 2, 3, 4, and 5 on the right limit.  
 Note: The area included within the yellow lines is in the Col. Williams group. Those portions colored green are excluded.  
 The Bonanza claims in solid green are advertised. The dotted green shows no. 110 below (not advert). According to notes by Gibbon, D.L.S.



442 Campbell  
 J.M.S.