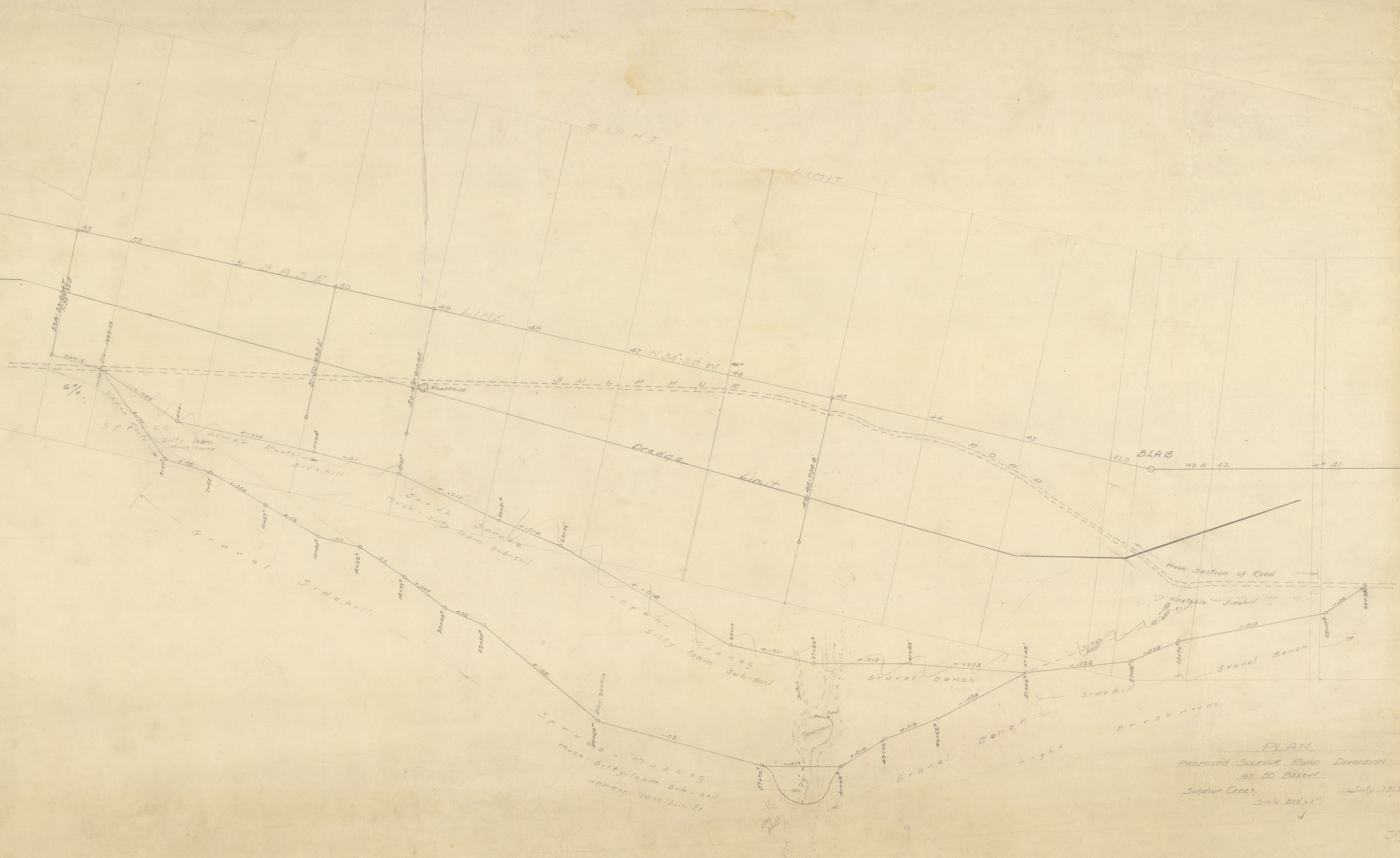


755101-25  
K508  
P205A  
11-25 1876  
P. 205A



PLAN  
Proposed Sulphur Road Diversion  
at 50 Below  
Sulphur Creek  
Scale 200' = 1"  
July 19/36

JEH. D. B. 11-25 1876  
Muck-silty loam sub-soil  
approx. 1800 Lin. Ft.