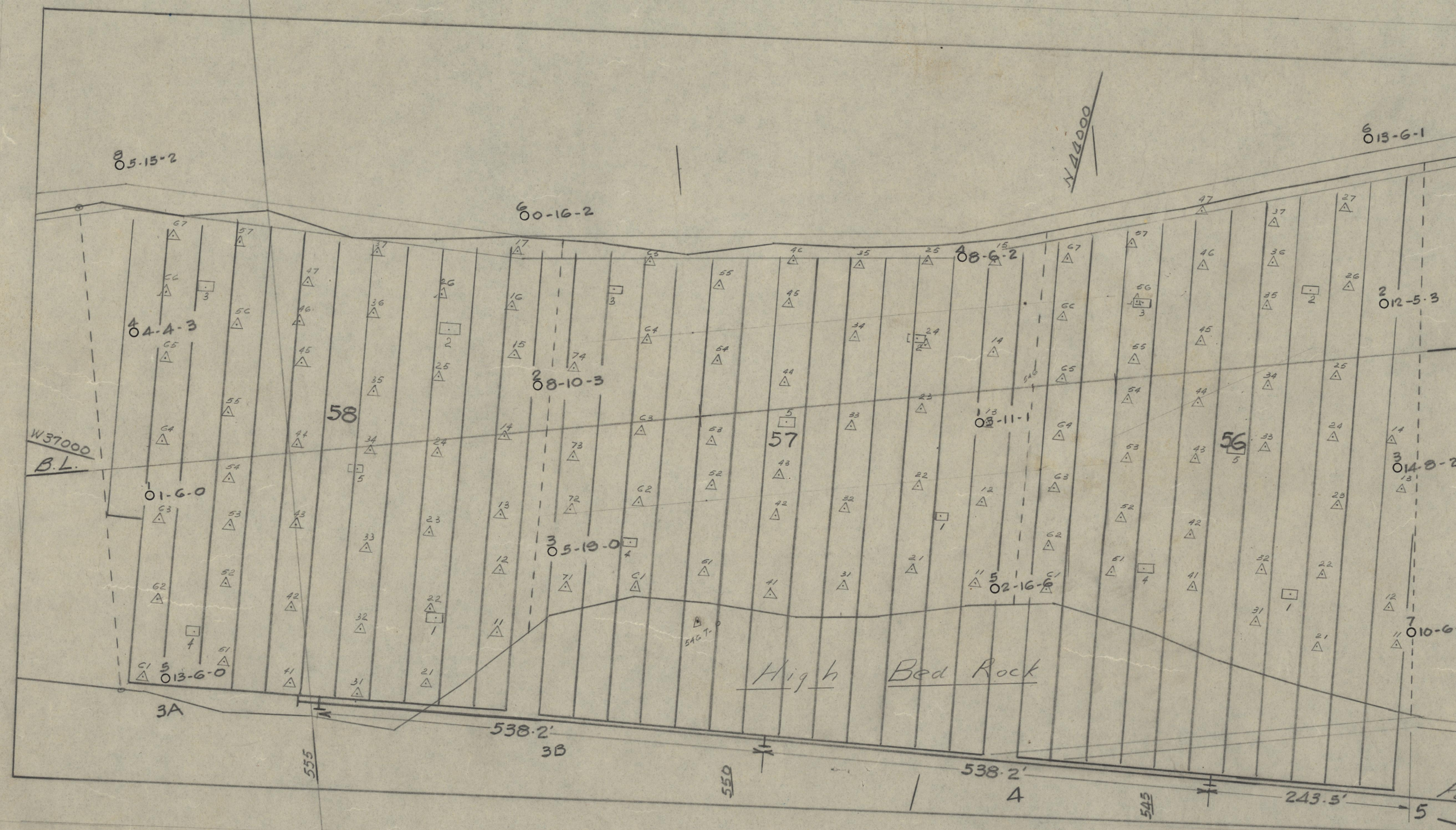


Riprap Line  
3678 feet



Unit No	Area Sq. Yds	No of Points	Average Depth		Total Footage	Volume Cu Yds.	
			Moist Gr	B.R.			
56	23222	422	9	8	3	8440	170296
57	23844	433	4	13	3	8660	174859
58	30022	545	5	11	4	10900	220163
<b>Total</b>	<b>77088</b>	<b>1400</b>				<b>28000</b>	<b>565318</b>

Probable driving rate per 8hr. shift 96 Feet  
 Probable driving season May 10-June 30 51 Days  
 Driving crew required - Feet - (Days x rate) 6 Men  
 Driving order - 56-57-58  
 Point spacing - 24' Centers

□ Bed Rock Test Holes  
 △ Probe Holes

YUKON CONS. GOLD CORP. LTD.  
 DAWSON, Y.T.

Nº 9 Thawing Layout  
1954 Season

DRAWN P.S.C. SCALE 1"=100'  
 TRACED Dec 10-54  
 DATE  
 CHECKED No.