

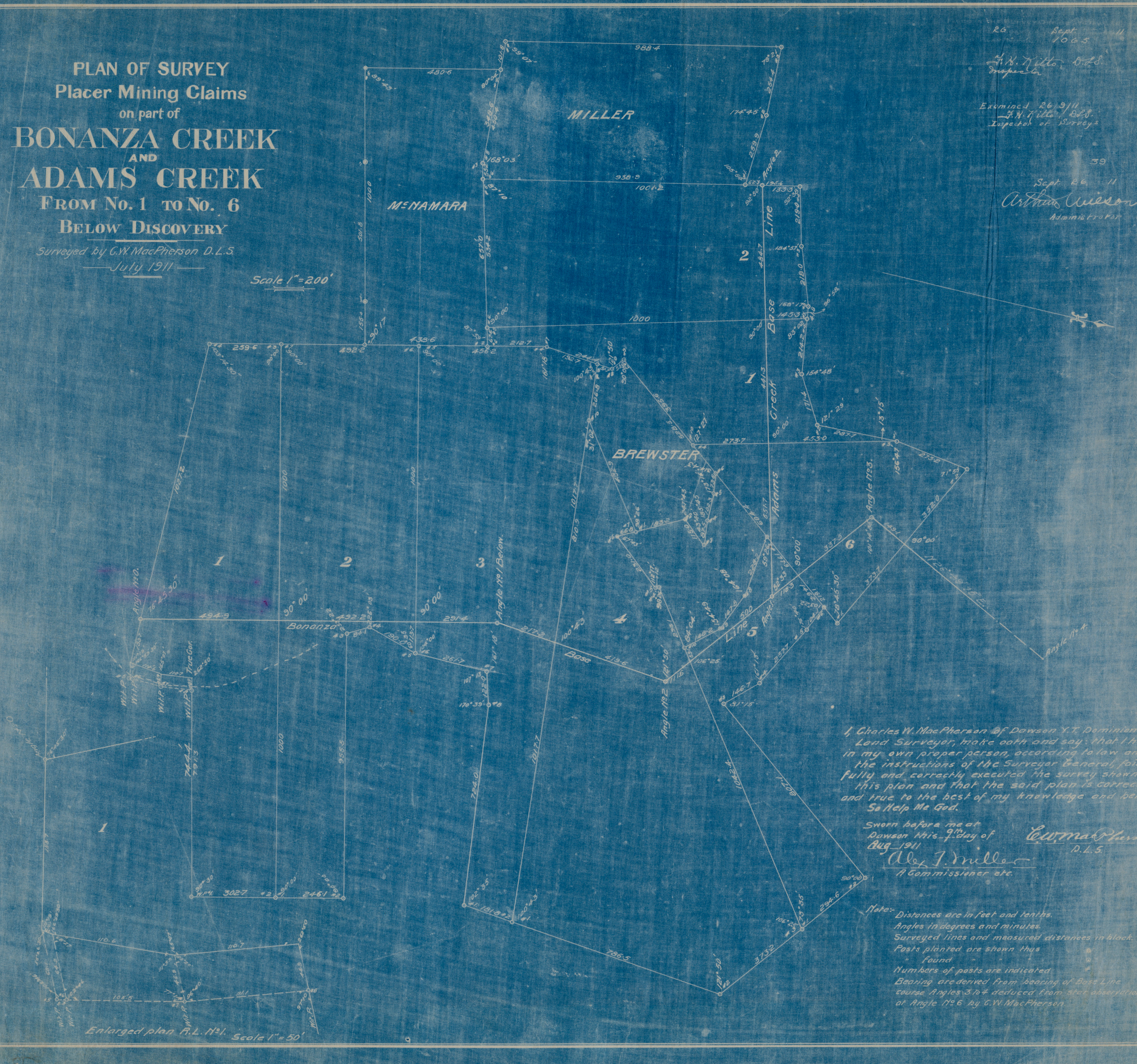
PLAN OF SURVEY
Placer Mining Claims
on part of
BONANZA CREEK
AND
ADAMS CREEK
FROM No. 1 TO No. 6
BELOW DISCOVERY

Surveyed by G.W. MacPherson D.L.S.
July 1911

Scale 1" = 200'

26 Sept 1065
W. H. Miller D.L.S.
Inspector
Examined 26/9/11
W. H. Miller D.L.S.
Inspector of Surveys

39
Sept. 26 11
Arthur Wilson
Administrator



I, Charles W. MacPherson of Dawson Y.T. Dominion
Land Surveyor, make oath and say: that I have
in my own proper person, according to law and
the instructions of the Surveyor General, faith-
fully and correctly executed the survey shown by
this plan and that the said plan is correct
and true to the best of my knowledge and belief.
So Help Me God.

Sworn before me at
Dawson this 9th day of
Aug 1911
Alex. J. Miller
A Commissioner etc.

Note: Distances are in feet and tenths.
Angles in degrees and minutes.
Surveyed lines and measured distances in black.
Posts planted are shown thus
" found
Numbers of posts are indicated
Bearings are derived from bearing of Base Line
course Angles 3 to 6 deduced from star observation
at Angle No 6 by G.W. MacPherson.

Enlarged plan A.L. No. 1. Scale 1" = 50'