

- LEGEND**
- No. 33 Drill Hole
 - Original Depth of Muck
 - Pipe Line 1st Position
 - Pipe Line 2nd Position
 - Retreating Pipe Line
 - Temporary Pipe Line for Blowing Tailings
 - Giant Standard Setup
 - Giant Cowboy Setup
 - Dredge Limit and Required Top of Bank
 - Drift Tailings
 - Limit of Shallow Stripping
 - Limit of Completed Stripping
 - Creeks and Drains

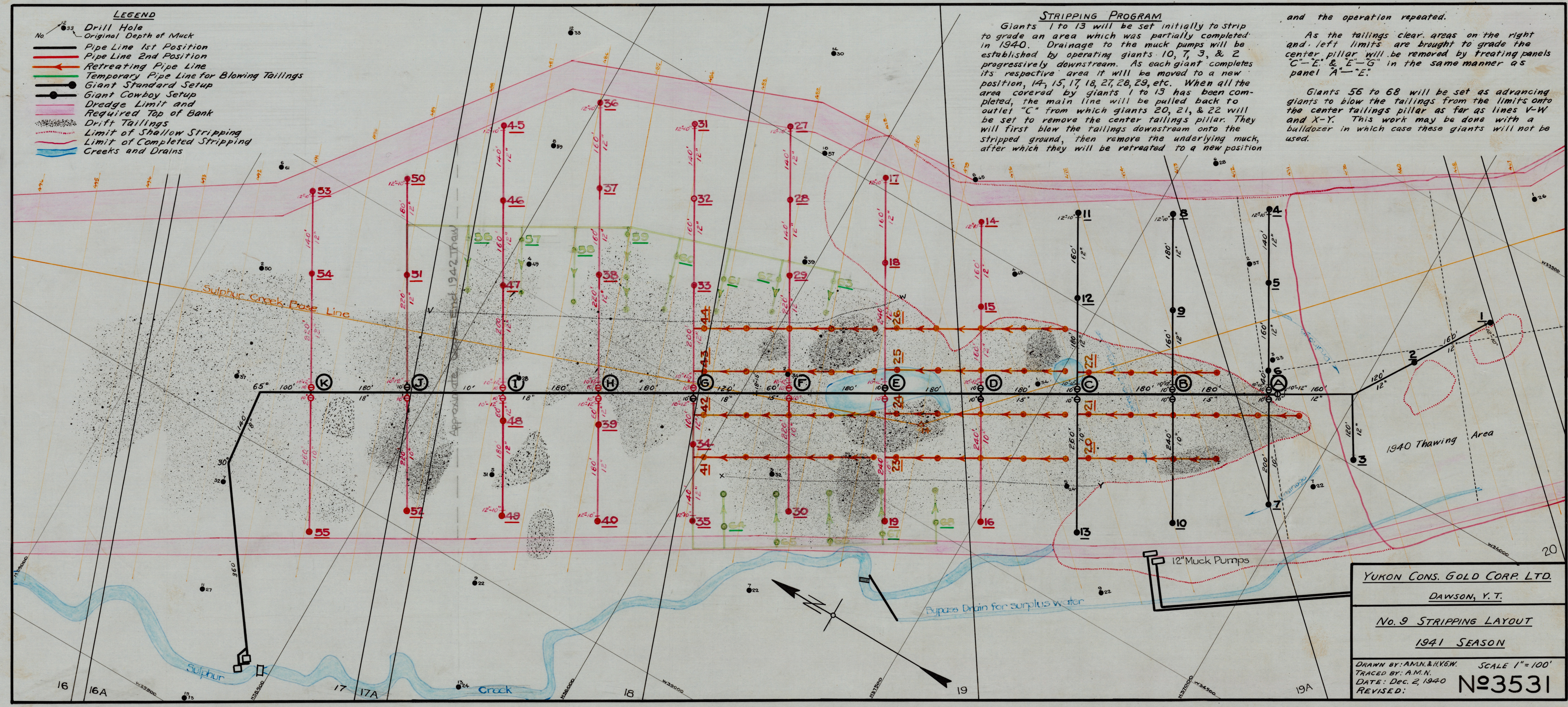
STRIPPING PROGRAM

Giants 1 to 13 will be set initially to strip to grade an area which was partially completed in 1940. Drainage to the muck pumps will be established by operating giants 10, 7, 3, & 2 progressively downstream. As each giant completes its respective area it will be moved to a new position, 14, 15, 17, 18, 27, 28, 29, etc. When all the area covered by giants 1 to 13 has been completed, the main line will be pulled back to outlet "C" from which giants 20, 21, & 22 will be set to remove the center tailings pillar. They will first blow the tailings downstream onto the stripped ground, then remove the underlying muck, after which they will be retreated to a new position

and the operation repeated.

As the tailings clear areas on the right and left limits are brought to grade the center pillar will be removed by treating panels "C-E" & "E-G" in the same manner as panel "A-E".

Giants 56 to 68 will be set as advancing giants to blow the tailings from the limits onto the center tailings pillar as far as lines V-W and X-Y. This work may be done with a bulldozer in which case these giants will not be used.



YUKON CONS. GOLD CORP. LTD.	
DAWSON, Y. T.	
No. 9 STRIPPING LAYOUT	
1941 SEASON	
DRAWN BY: AMN. & HYEM.	SCALE 1" = 100'
TRACED BY: AMN.	DATE: Dec. 2, 1940
REVISED:	No. 3531

Handwritten notes and a small diagram in the bottom right corner. The notes include '1941', '3531', and '1900'. The diagram shows a small section of a pipe line with a '12\"/>