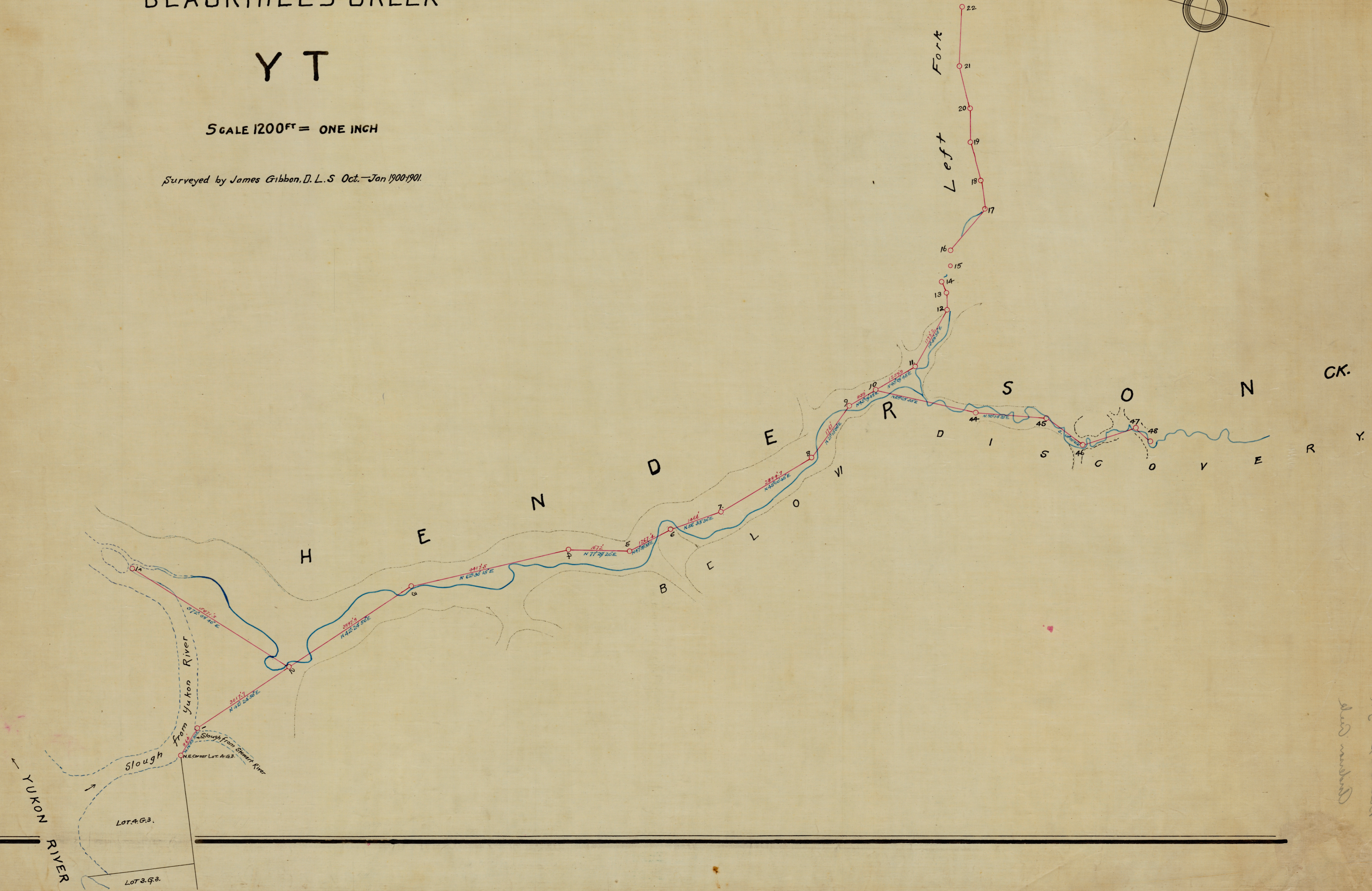
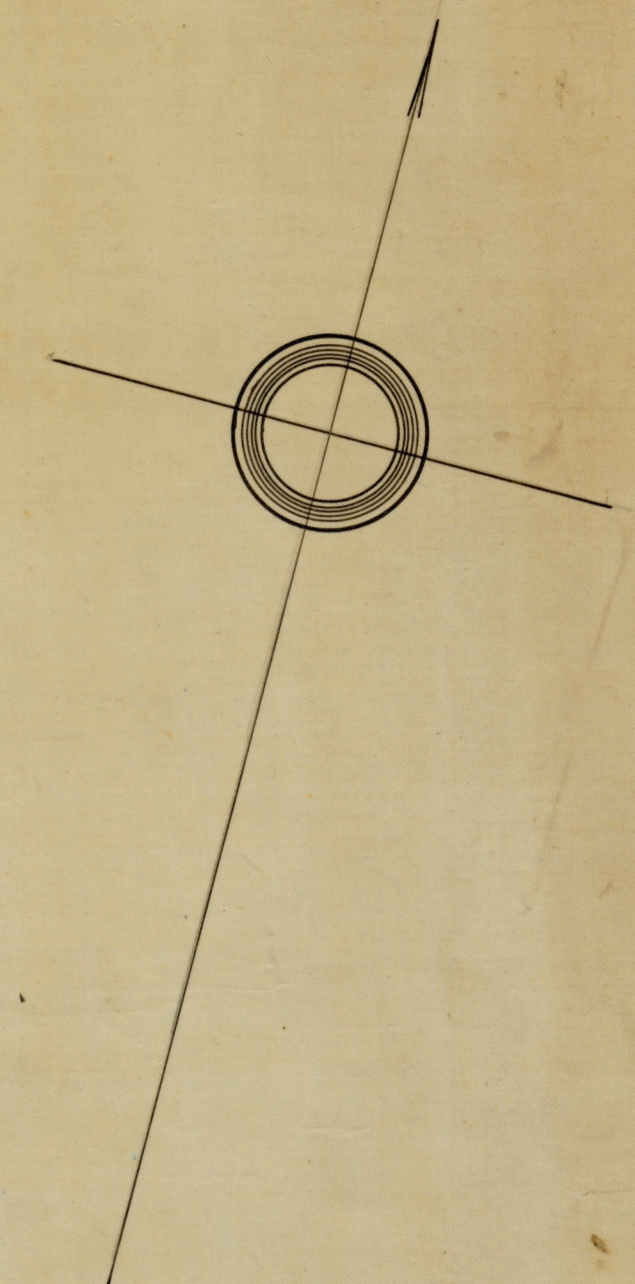


PLAN  
OF  
BASE LINE SURVEY  
OF  
HENDERSON CREEK  
AND PART OF  
BLACKHILLS CREEK

YT

SCALE 1200 FT = ONE INCH

Surveyed by James Gibbon, D. L. S. Oct. - Jan 1900/1901.



*Handwritten notes:*  
 Henderson Creek  
 Base line survey  
 1898  
 1893

555V  
 2235.24F  
 382 4541  
 EYED 20/02