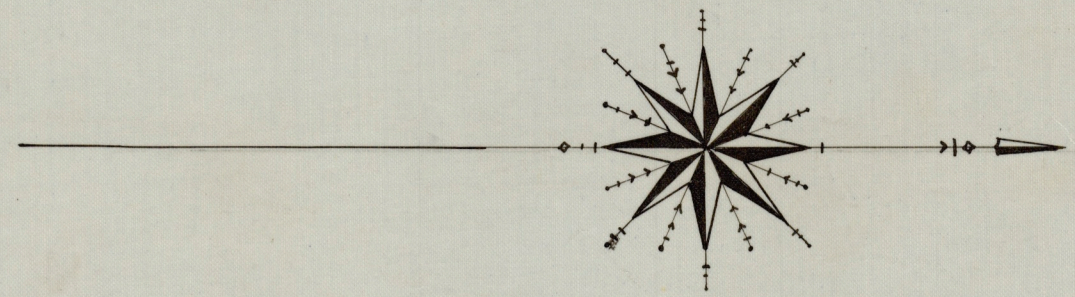
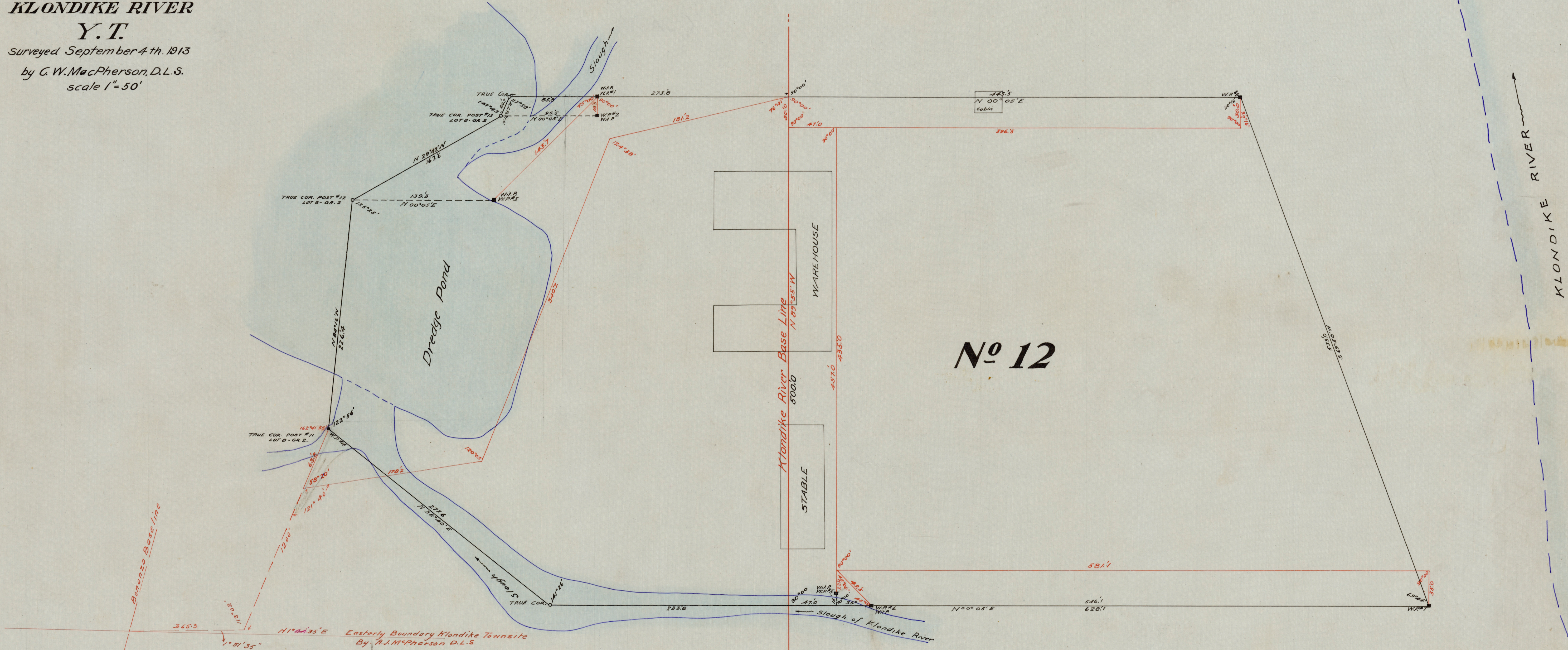


PLAN
OF
CLAIM N^o 12 ABOVE
MARIS DISCOVERY ON THE
LEFT LIMIT
OF
KLONDIKE RIVER
Y.T.
Surveyed September 4th, 1913
by G. W. MacPherson, D.L.S.
scale 1"=50'



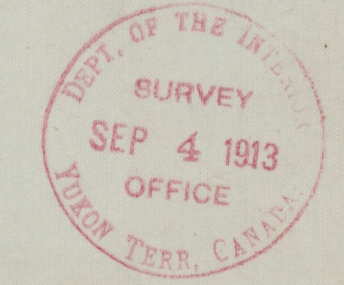
11



N^o 12

Bearings are derived from the bearing $11^{\circ}44'35''E$
as returned for the Easterly Boundary of Klondike
Townsite by G. W. MacPherson D.L.S.
Distances are in feet and tenths.
Angles are in degrees and minutes.
W.P. --- Wooden posts 4" x 4" x 4' sawed spruce
Wit. P. --- Witness Posts.
Traverse lines are shown in red.
Offset lines " " " dotted black.
Claim boundaries " " " solid black.

I, Charles Wilfrid MacPherson of Dawson, Y.T. Dominion
Land Surveyor make oath and say: that I have
in my own proper person, according to law and
the instructions of the Surveyor General, faith-
fully and correctly executed the survey shown by
this plan and that the said plan is correct
and true to the best of my knowledge and belief
So Help Me God.
Sworn before me at
Dawson this 4th day of
September 1913
Alex. J. Miller
A Commissioner for taking affidavits
in and for the Yukon Territory.



Y.G.C. 6521