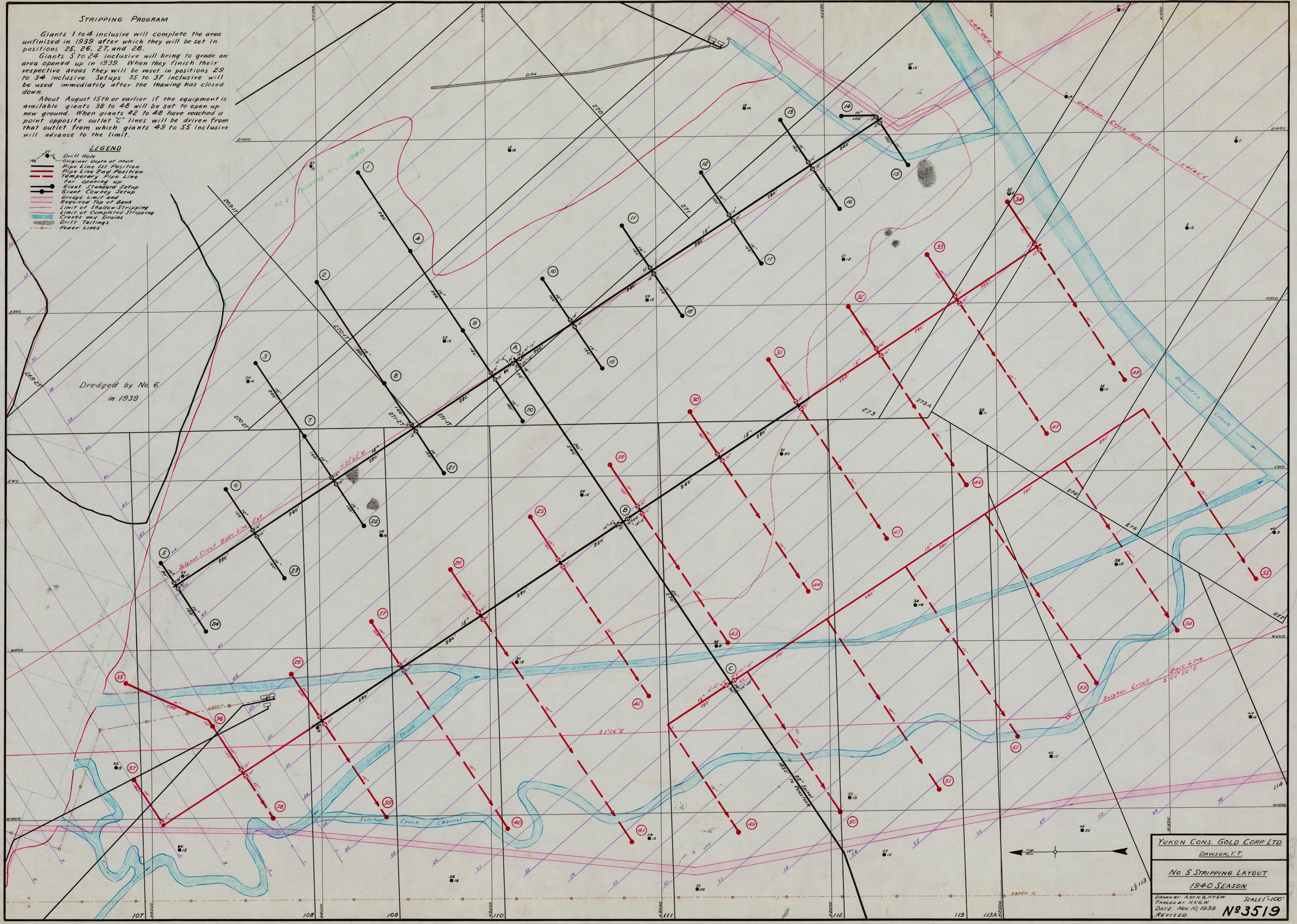


STRIPPING PROGRAM

Giants 1 to 4 inclusive will complete the area unfinished in 1939 after which they will be set in positions 25, 26, 27, and 28.
 Giants 5 to 24 inclusive will bring to grade an area opened up in 1939. When they finish their respective areas they will be reset in positions 29 to 34 inclusive. Setups 35 to 37 inclusive will be used immediately after the thawing has closed down.
 About August 15th or earlier if the equipment is available giants 38 to 48 will be set to open up new ground. When giants 42 to 48 have reached a point opposite the outlet "C" lines will be driven from that outlet from which giants 49 to 55 inclusive will advance to the limit.

LEGEND

- Drill Hole
- Original Depth of Muck
- Pipe Line 1st Position
- Pipe Line 2nd Position
- - - Temporary Pipe Line for opening up
- Giant Standard Setup
- Giant Cowboy Setup
- Dredge Limit and Required Top of Bank
- Limit of Shallow Stripping
- Limit of Completed Stripping
- Creeks and Drains
- Drift Tailings
- Power Lines



YUKON CONS. GOLD CORP. LTD.
 DAWSON, Y.T.
NO 5 STRIPPING LAYOUT
 1940 SEASON
 DRAWN BY: AM & H.G.W. SCALE 1"=100'
 TRACED BY: H.G.W.
 DATE: NOV 10, 1939
 REVISED **Nº 3519**