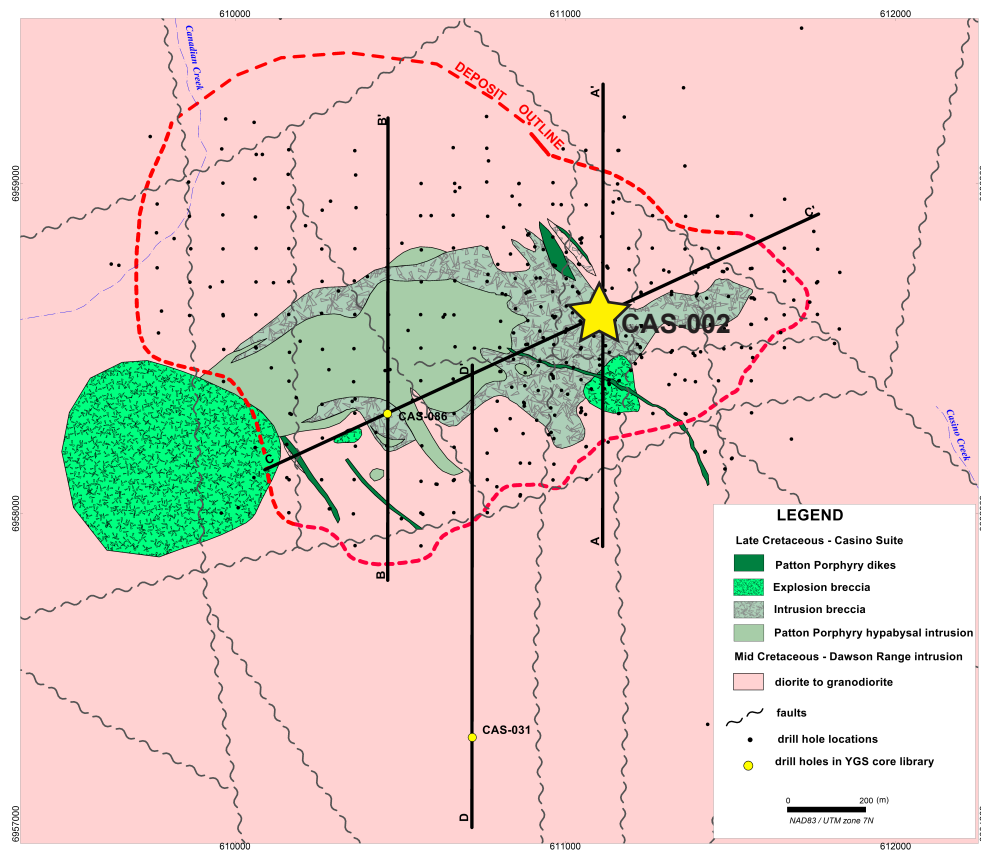


## Casino deposit (Yukon MINFILE 115J 028) Drill Hole: CAS-002, eastern part of deposit

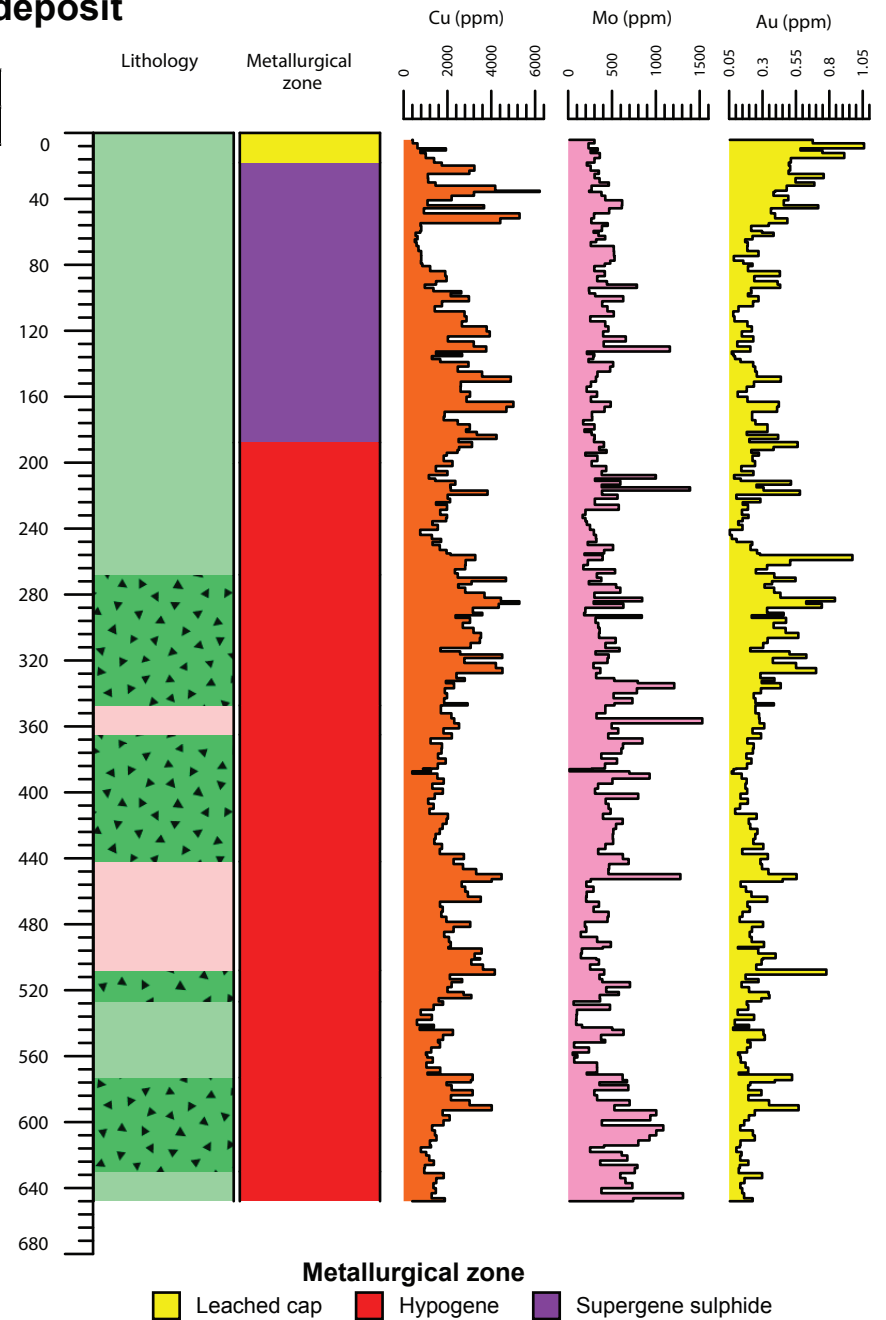
Area	Hole No.	Azimuth	Dip	Length (m)	Collar coordinates (NAD83, Zn 7)
Casino	CAS-002	0	-90	684.00	611110mE, 6958601mN

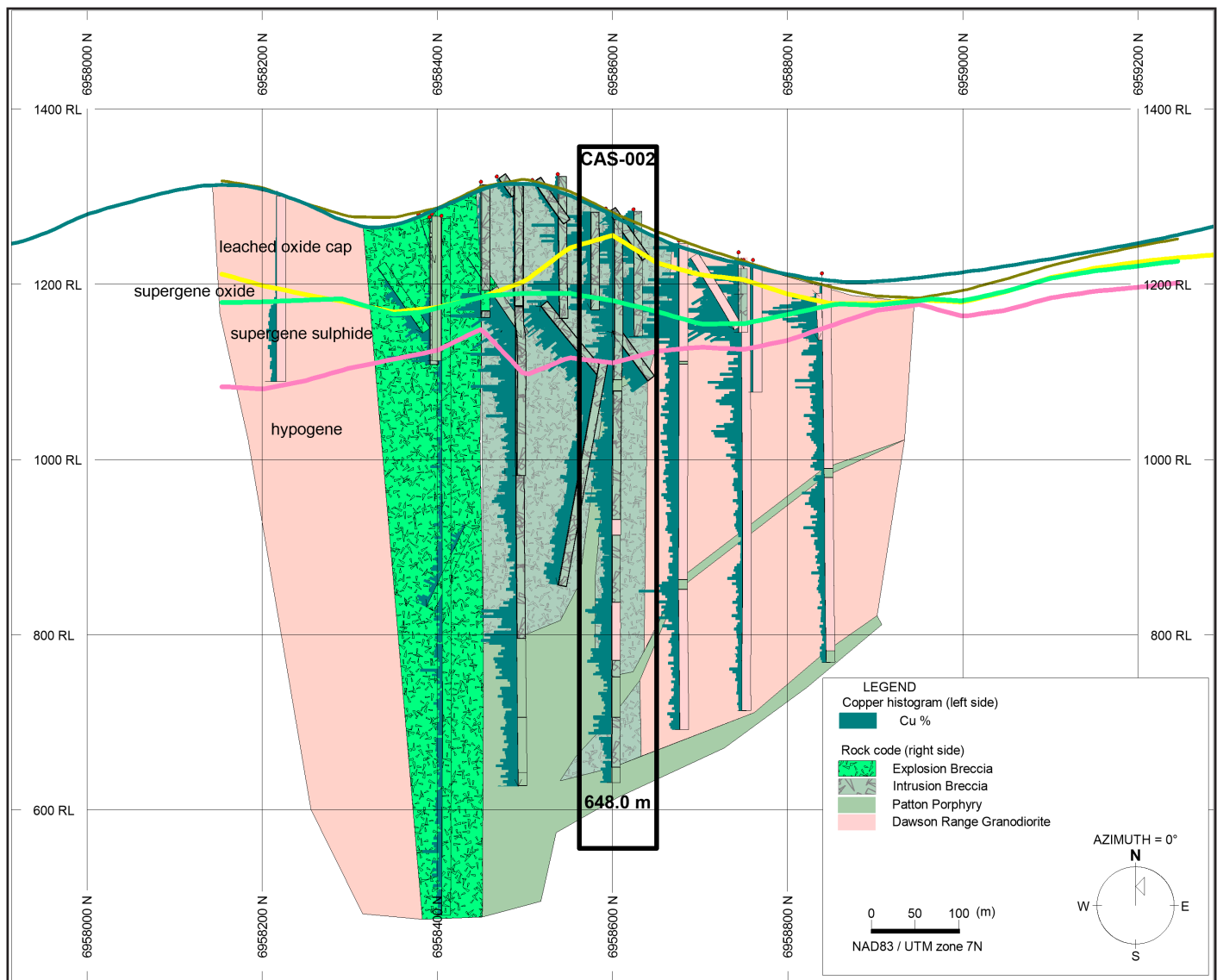


Above: Geology of the Casino deposit area. Collar location of CAS-002 shown by yellow star, yellow circles show collar locations of other drill holes in YGS collection.

Right: Simplified strip log with selected assays. Lithology fill same as map above.

December 7, 2016





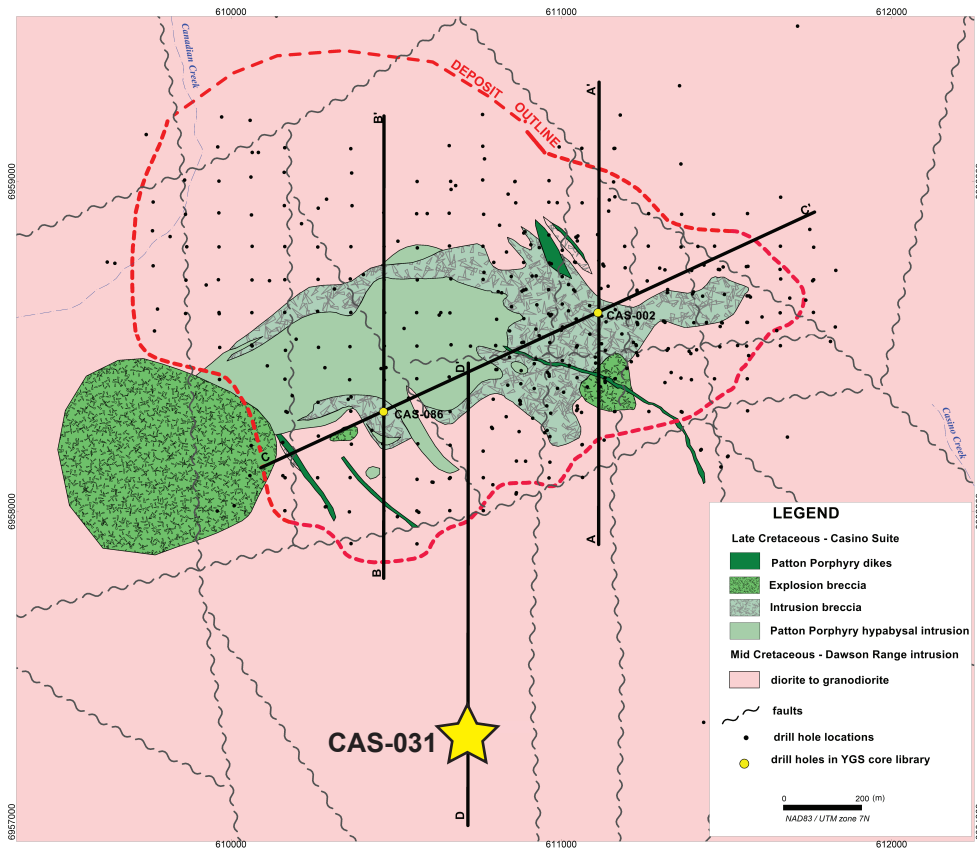
Left: Section A-A' showing copper values downhole and interpreted geology.

Below: Composited assays from CAS-002 subdivided by metallurgical zone.

Hole	From	To	Width (m)	Au (g/t)	Ag g/t	Cu %	Mo %	Cu Eq %	Category
CAS-002	4.2	19.81	15.61	0.75	2.70	0.11	0.03	-	Leached Cap Gold Zone
	19.81	190.5	170.69	0.29	1.20	0.24	0.04	0.66	Supergene Zone
	190.5	648	457.5	0.27	1.45	0.22	0.05	0.66	Hypogene Zone

## Casino deposit (Yukon MINFILE 115J 028) Drill Hole: CAS-031, 500 m south of deposit

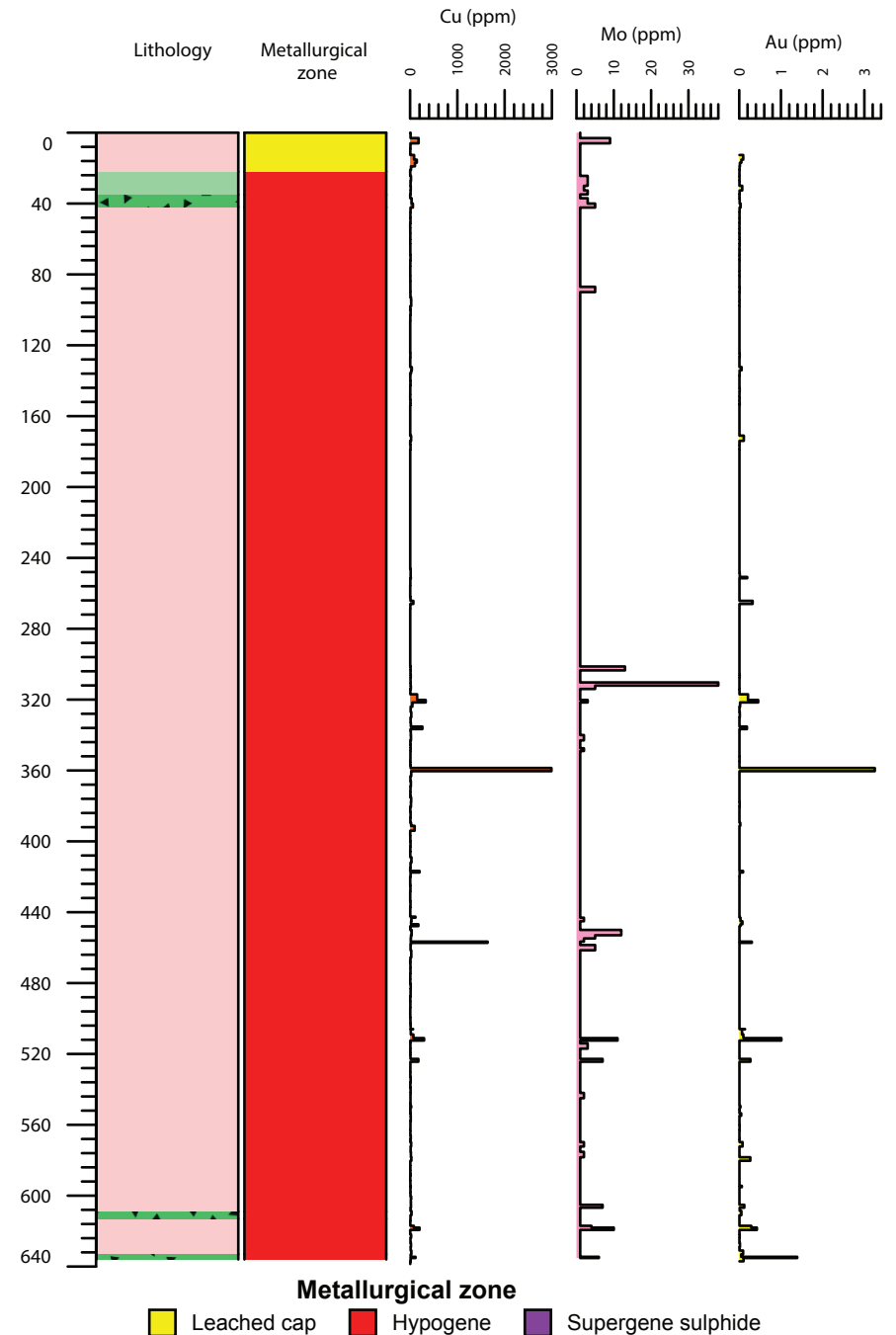
Area	Hole No.	Azimuth	Dip	Length (m)	Collar coordinates (NAD83, Zn 7)
Casino	CAS-031	244	-70	638.56	610717mE, 6957322mN

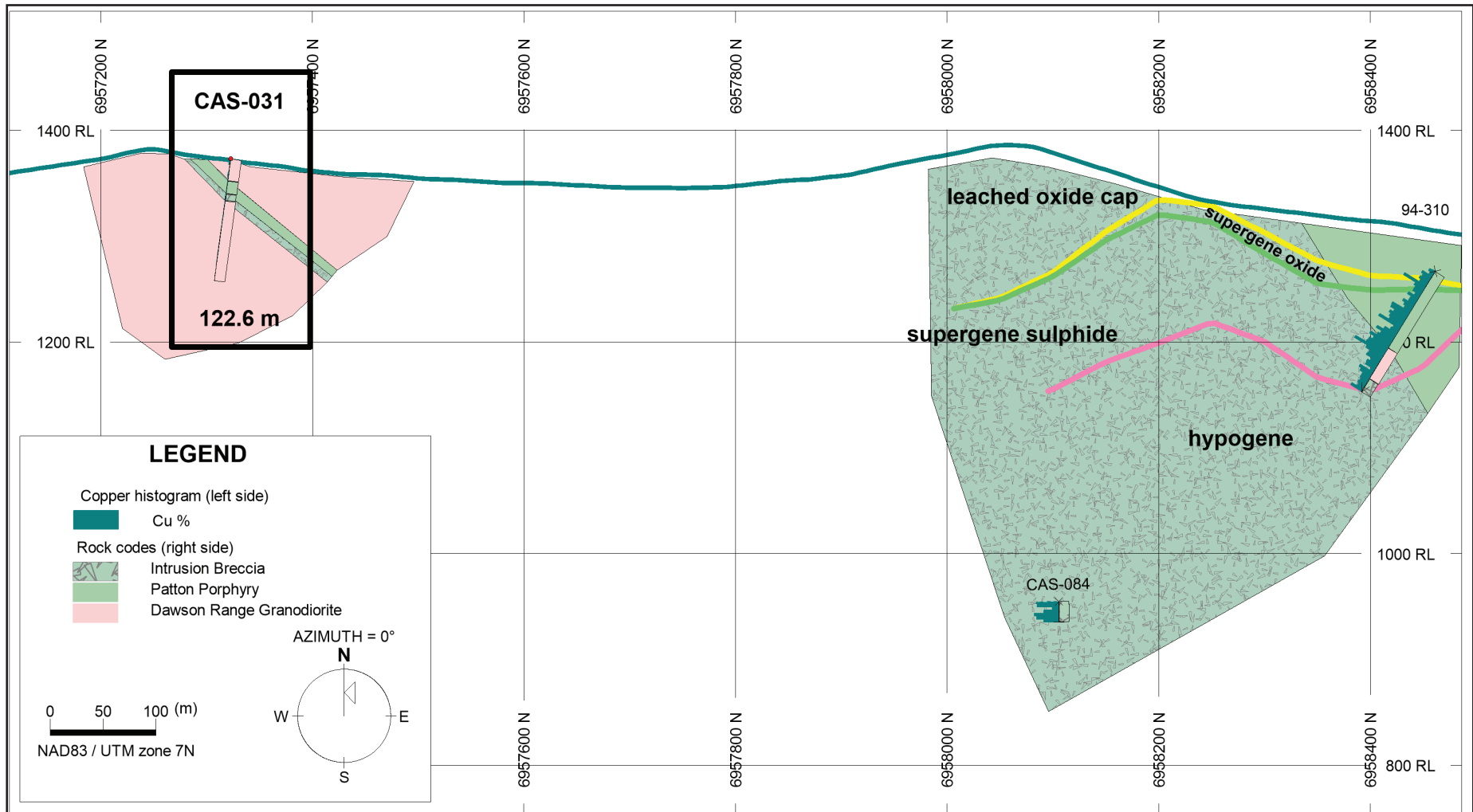


Above: Geology of the Casino deposit area. Collar location of CAS-031 shown by yellow star, yellow circles show collar locations of other drill holes in YGS collection.

Right: Simplified strip log with selected assays. Lithology fill same as map above.

December 13, 2016





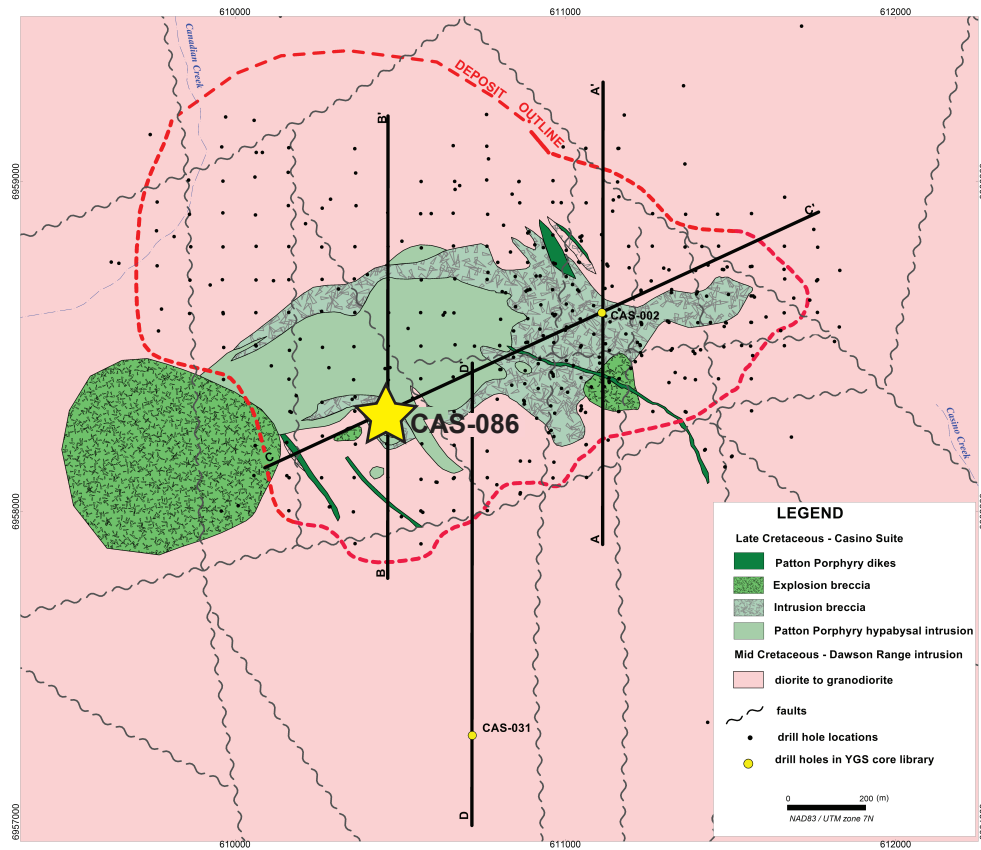
Above: Section D-D' showing CAS-031 and interpreted geology.

Below: High-grade assays from CAS-031.

Hole	From	To	Width (m)	Au (g/t)	Ag g/t	Cu %	Mo %	Cu Eq %	Category
CAS-031	358.60	360.40	1.80	3.25	58.00	0.30	<0.0001	-	Gold-bearing vein
	511.05	512.45	1.40	1.01	32.00	0.03	0.00	-	Gold-bearing vein
	634.50	635.20	0.70	1.39	290.00	0.01	0.00	-	Gold-bearing vein

## Casino deposit (Yukon MINFILE 115J 028) Drill Hole: CAS-086, western part of deposit

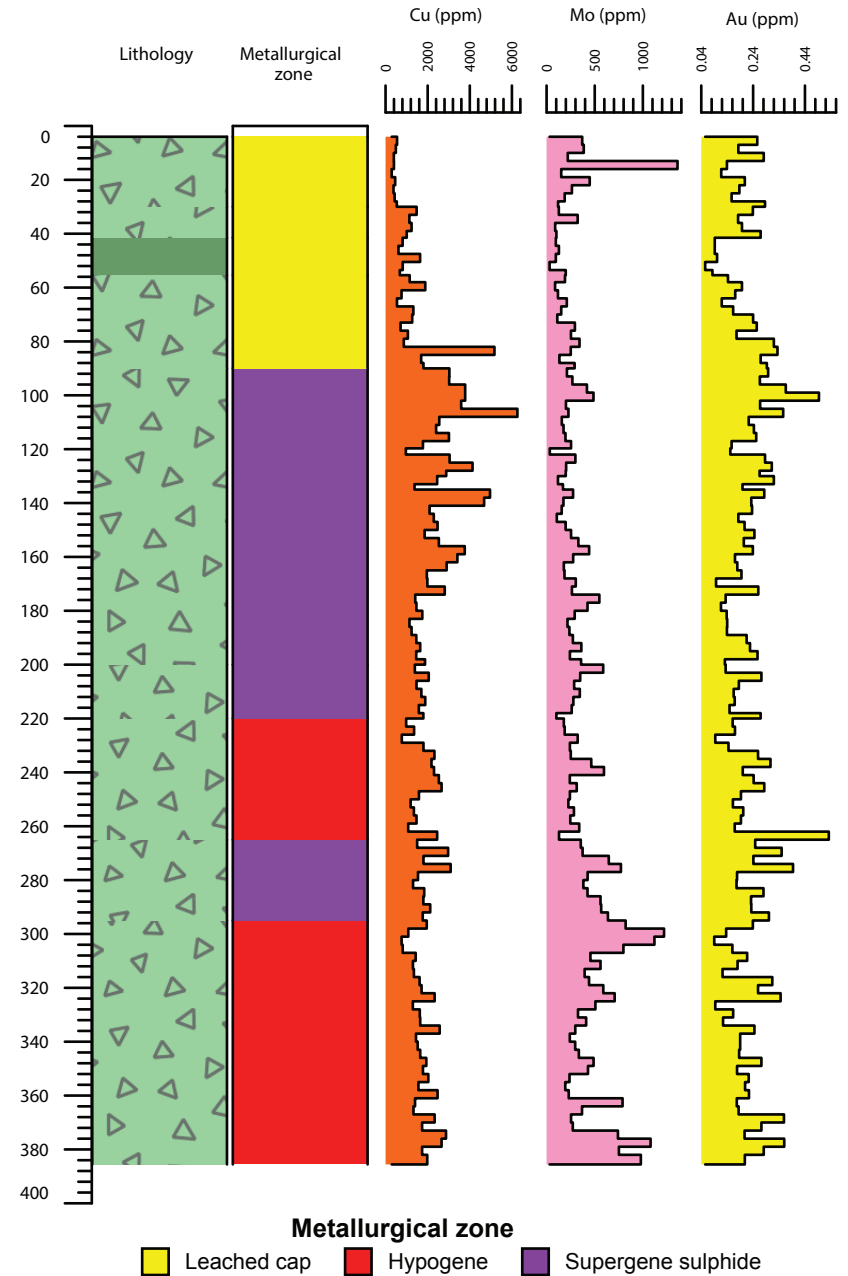
Area	Hole No.	Azimuth	Dip	Length (m)	Collar coordinates (NAD83, Zn 7)
Casino	CAS-086	0	-90	385.87	610462mE, 6958303mN

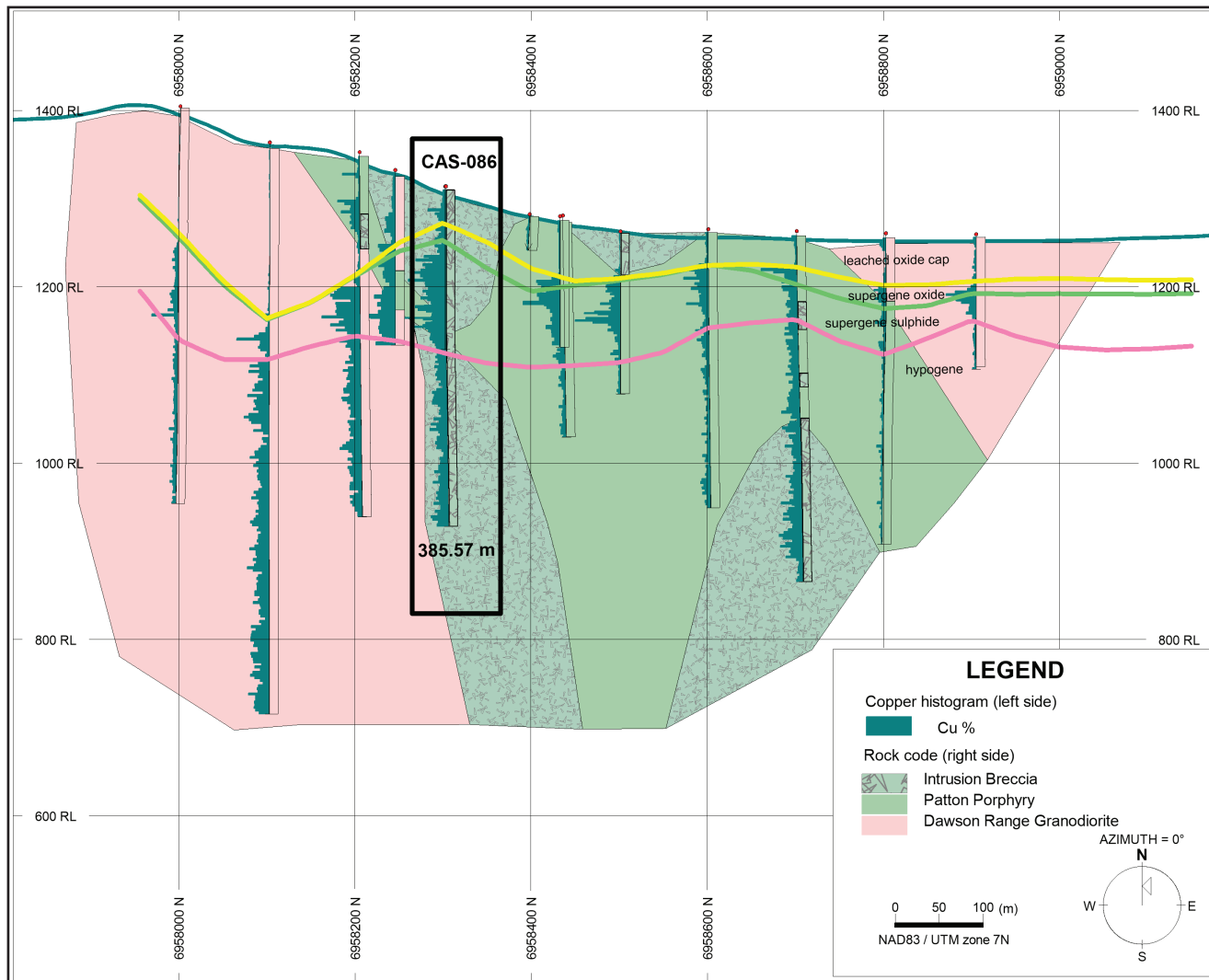


Above: Geology of the Casino deposit area. Collar location of CAS-086 shown by yellow star, yellow circles show collar locations of other drill holes in YGS collection.

Right: Simplified strip log with selected assays. Lithology fill same as map above.

December 13, 2016





Left: Section C-C' showing copper values downhole and interpreted geology.

Below: Composited assays from CAS-086 subdivided by metallurgical zone.

Hole	From	To	Width (m)	Au (g/t)	Ag g/t	Cu %	Mo %	Cu Eq %	Category
CAS-086	4	30	26	0.17	1.21	0.04	0.03	-	Leached Cap Gold Zone
	30	55.4	25.4	0.15	0.91	0.11	0.01	0.28	Supergene Oxide
	55.4	183	127.6	0.23	1.96	0.26	0.02	0.56	Supergene Sulphide
	183	385.57	202.57	0.22	1.97	0.18	0.04	0.58	Hypogene