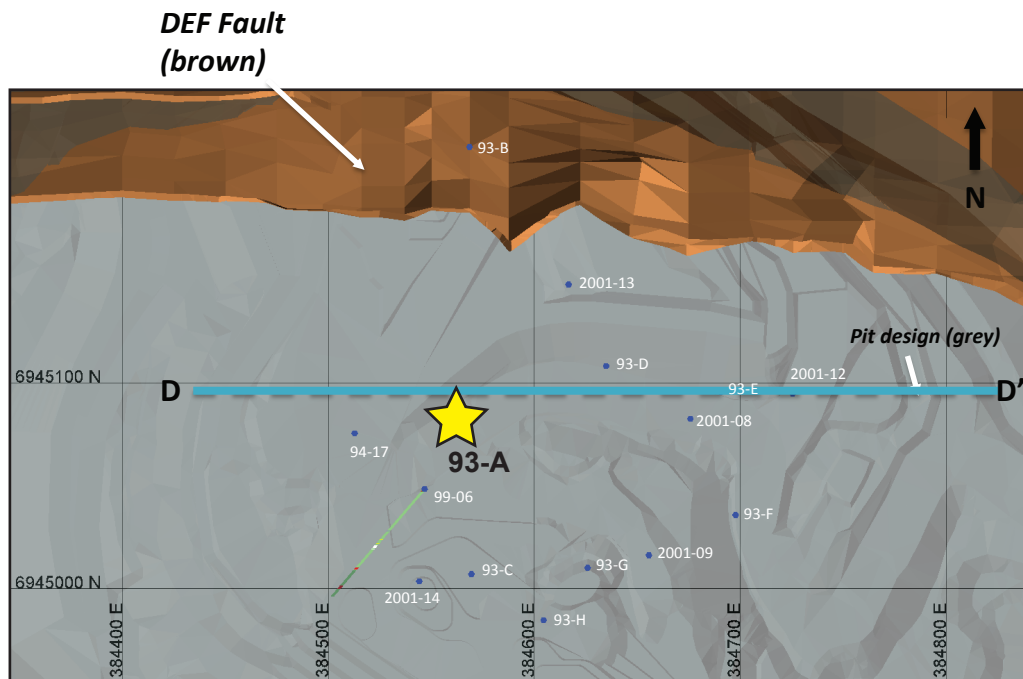


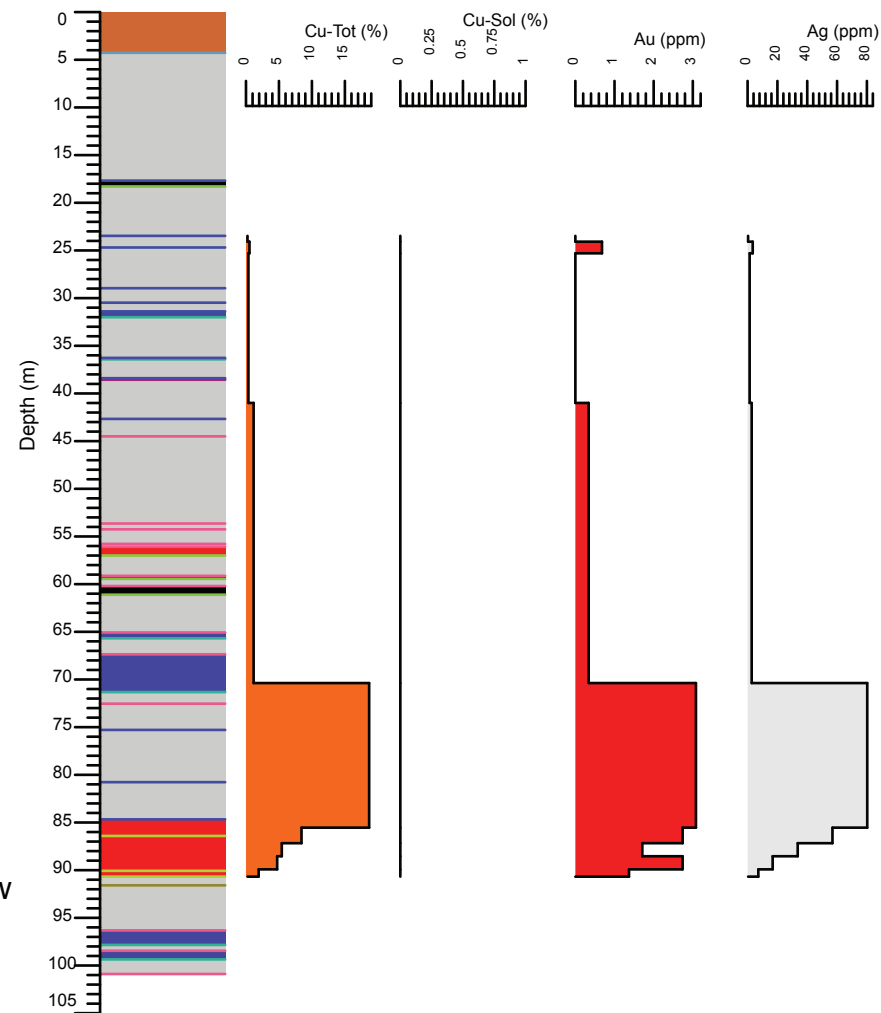
Minto deposit (Yukon MINFILE 115I 021, 022) Drill Hole: 93-A, Minto Main deposit

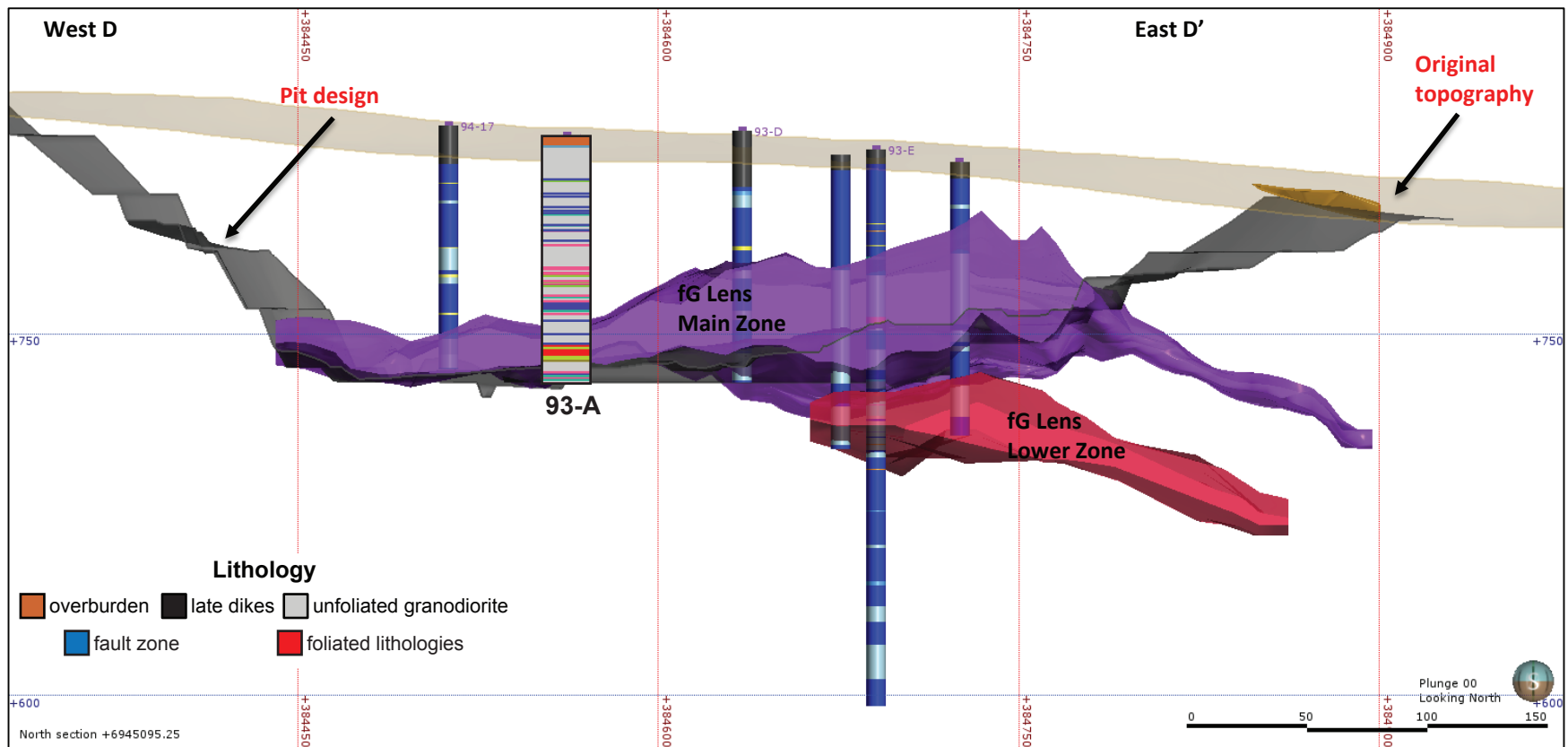
Area	Hole No.	Azimuth	Dip	Length (m)	Collar coordinates (NAD83, Zn 8)
Minto Main	93-A	0	-90	100.89	384562mE, 6945083mN



Above: Orthophoto of Minto area. Collar location of 93-A shown by yellow star, blue circles show collar locations of other drill holes in YGS collection.

Right: Simplified strip log with selected assays.





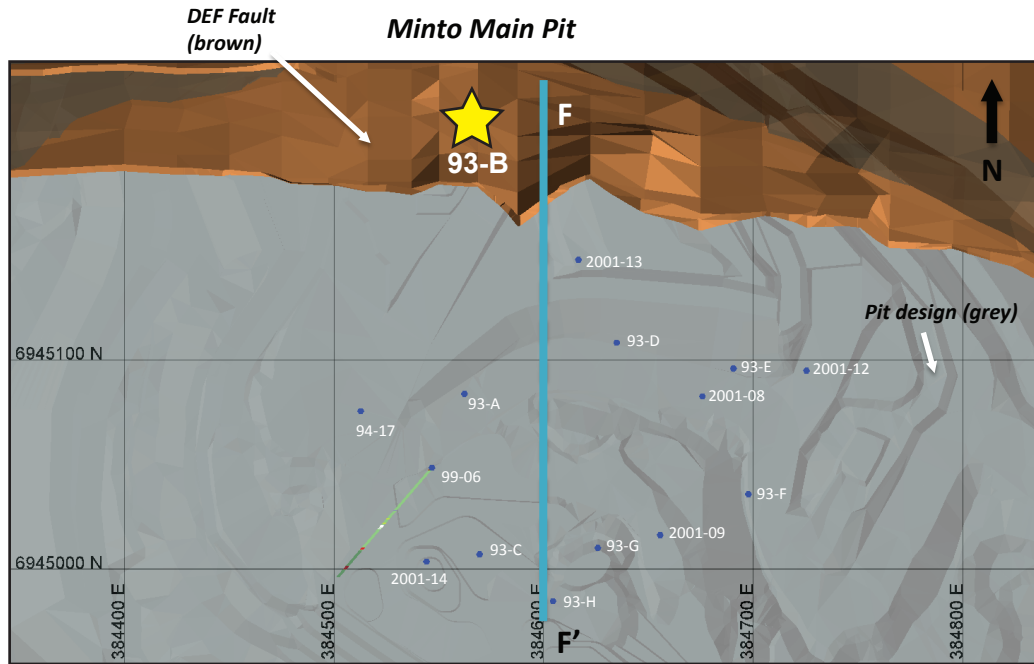
Above: Simplified vertical east-west cross-section through the Minto Main pit.

Right: Selected assays through Minto Main lower zone. Cu - Tot = sulphide and non-sulphide copper, Cu-Sol = non-sulphide copper

Hole	From (m)	To (m)	Interval (m)	Sample	Cu (%)	Cu-Sol (%)	Au (ppm)	Ag (ppm)
93-A	23.47	24.69	1.22	4593	0.2	0.0	0.0	0.3
93-A	24.69	25.91	1.22	4594	0.5	0.0	0.7	3.4
93-A	25.91	28.96	3.05	4595	0.4	0.0	0.0	1.4
93-A	56.08	57	0.92	4596	1.2	0.0	0.3	2.7
93-A	84.67	86.41	1.74	4685	18.7	0.0	3.1	80.2
93-A	86.41	87.93	1.52	4686	8.4	0.0	2.7	56.9
93-A	87.93	89.15	1.22	4687	5.4	0.0	1.7	33.6
93-A	89.15	90.68	1.53	4689	4.7	0.0	2.7	16.8
93-A	90.68	91.59	0.91	4690	1.9	0.0	1.4	7.2

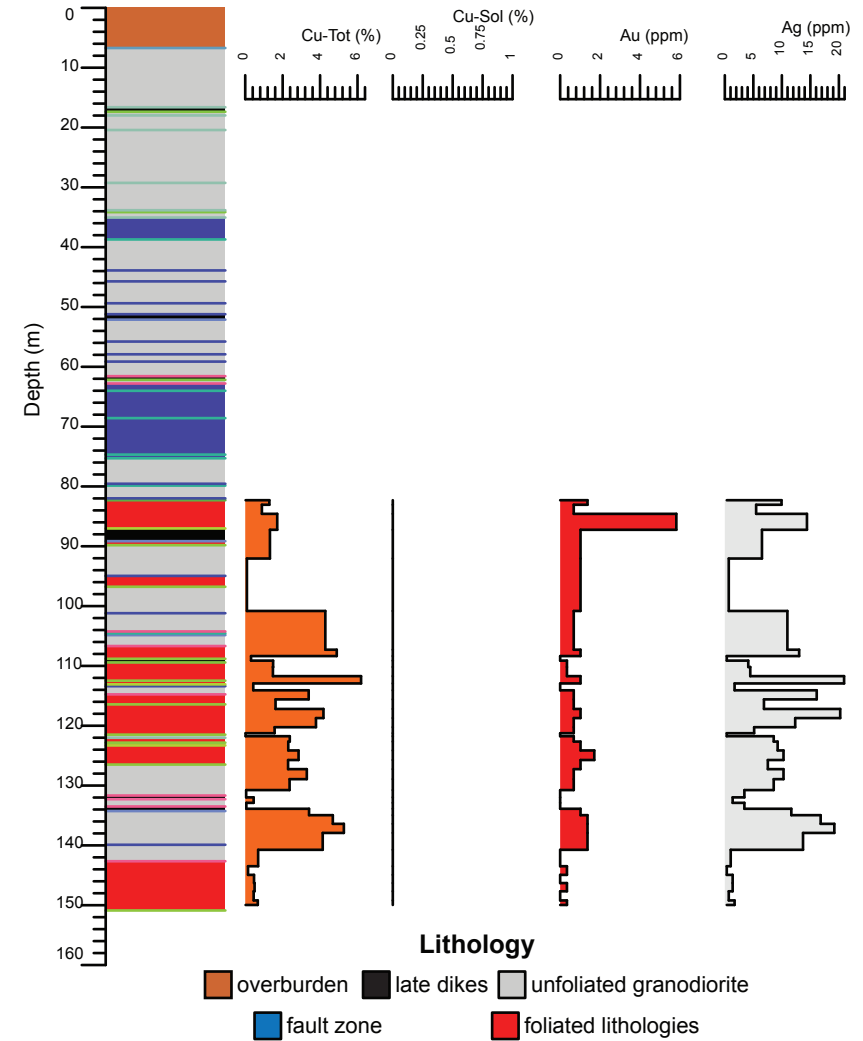
Minto deposit (Yukon MINFILE 115I 021, 022) Drill Hole: 93-B, Minto Main deposit

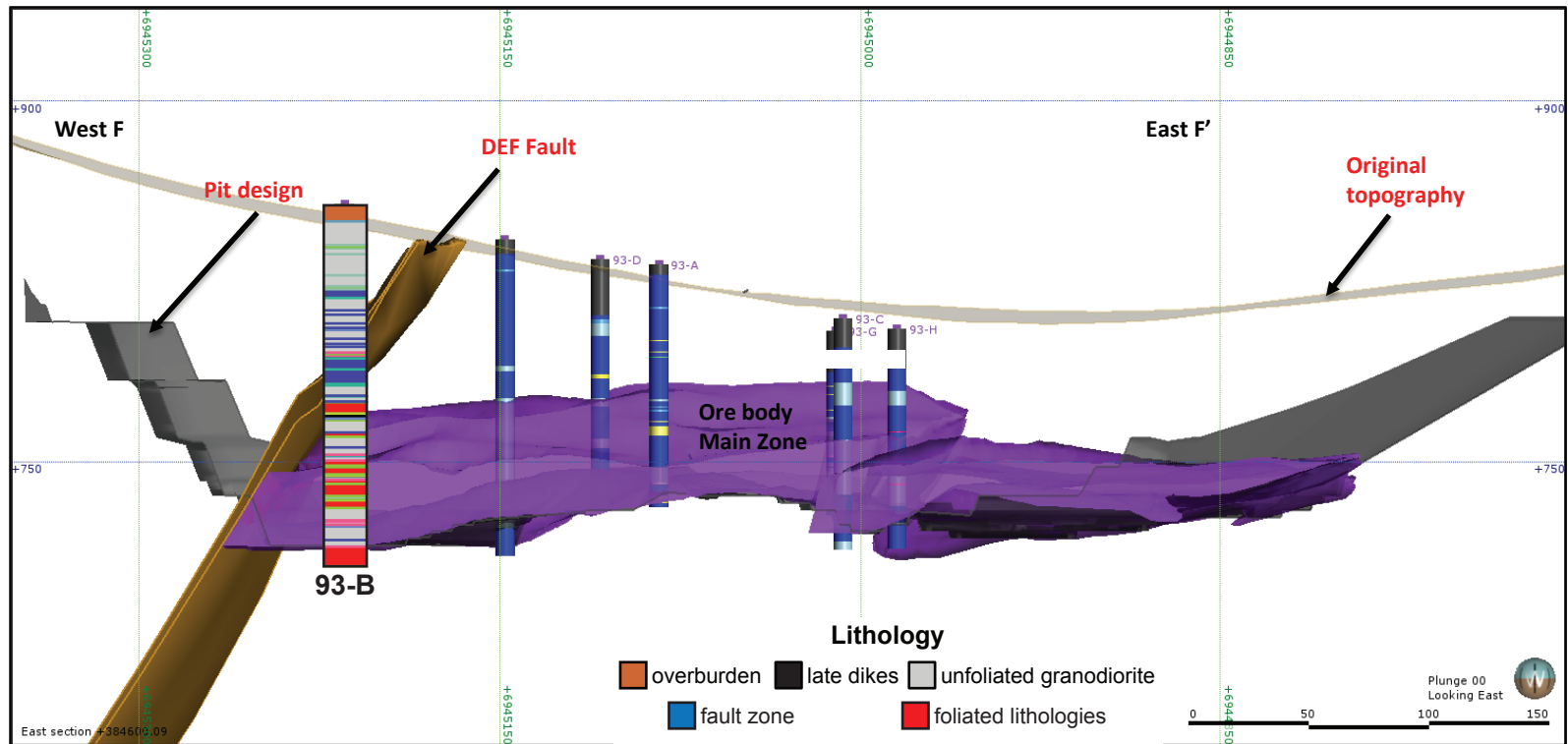
Area	Hole No.	Azimuth	Dip	Length (m)	Collar coordinates (NAD83, Zn 8)
Minto Main	93-B	0	-90	150.88	384568mE, 6945214mN



Above: Orthophoto of Minto area. Collar location of 93-B shown by yellow star, blue circles show collar locations of other drill holes in YGS collection.

Right: Simplified strip log with selected assays.





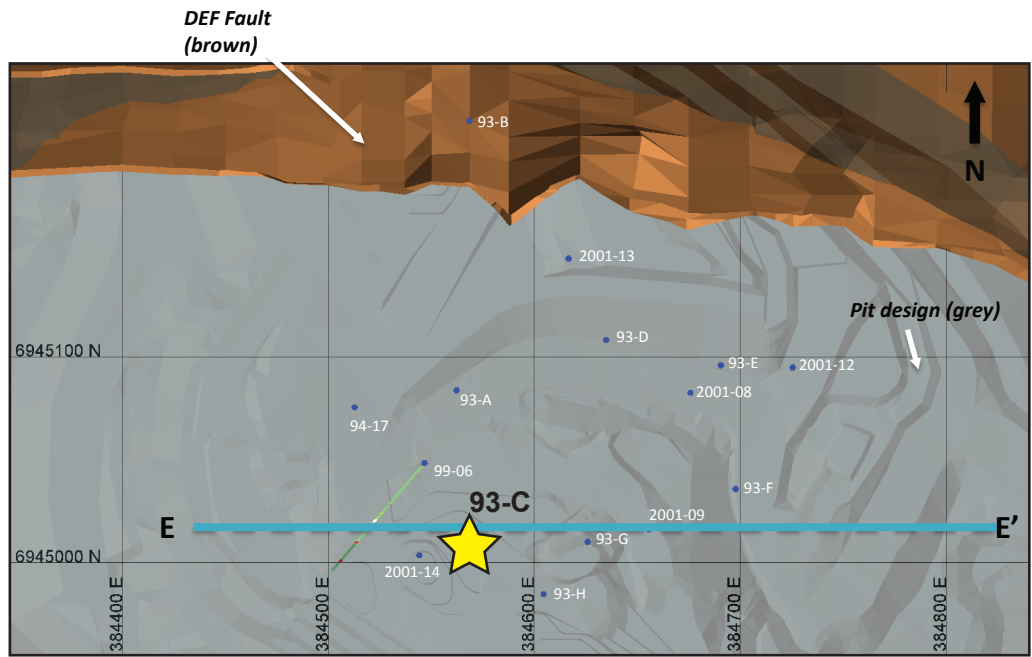
Above: Simplified vertical north-south cross-section through the Minto Main pit.

Right: Selected assays through Minto Main lower zone. Cu - Tot = sulphide and non-sulphide copper, Cu-Sol = non-sulphide copper

Hole	From (m)	To (m)	Interval (m)	Sample	Cu (%)	Cu-Sol (%)	Au (ppm)	Ag (ppm)
93-B	82.3	83.82	1.52	4999	1.3	0.0	1.4	9.9
93-B	83.82	85.34	1.52	5000	0.9	0.0	0.7	5.5
93-B	85.34	87.02	1.68	4551	1.7	0.0	5.8	14.4
93-B	89.15	89.82	0.67	4552	1.3	0.0	1.0	6.5
93-B	94.95	96.77	1.82	4553	0.1	0.0	1.0	0.7
93-B	106.68	107.9	1.22	2188	4.3	0.0	0.7	11.0
93-B	107.9	108.81	0.91	2189	4.9	0.0	1.0	13.0
93-B	108.81	109.42	0.61	2190	0.3	0.0	0.0	0.3
93-B	109.42	110.95	1.53	2191	1.5	0.0	0.3	4.1
93-B	110.95	112.47	1.52	2192	1.5	0.0	0.3	4.5
93-B	112.47	113.39	0.92	2193	6.2	0.0	1.0	20.9
93-B	113.39	114.76	1.37	2194	0.4	0.0	0.0	1.7

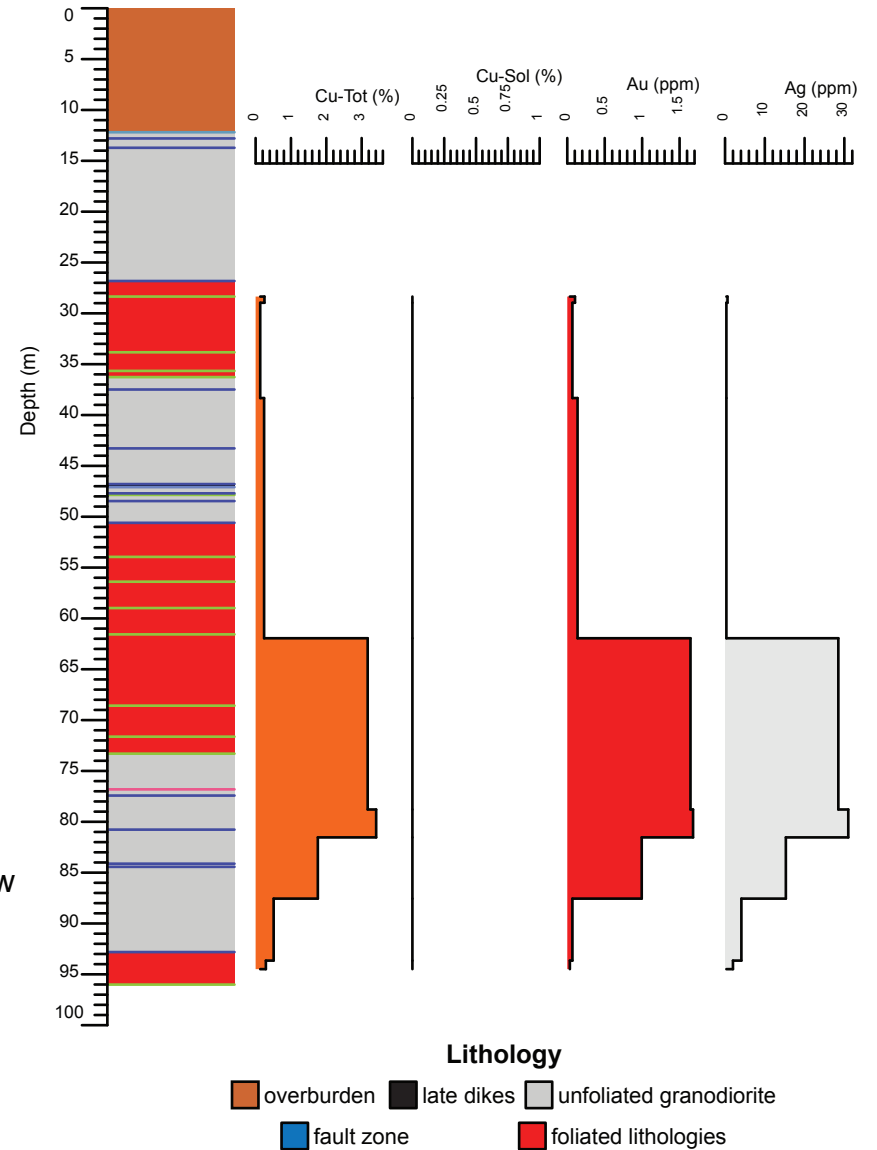
Minto deposit (Yukon MINFILE 115I 021, 022) Drill Hole: 93-C, Minto Main deposit

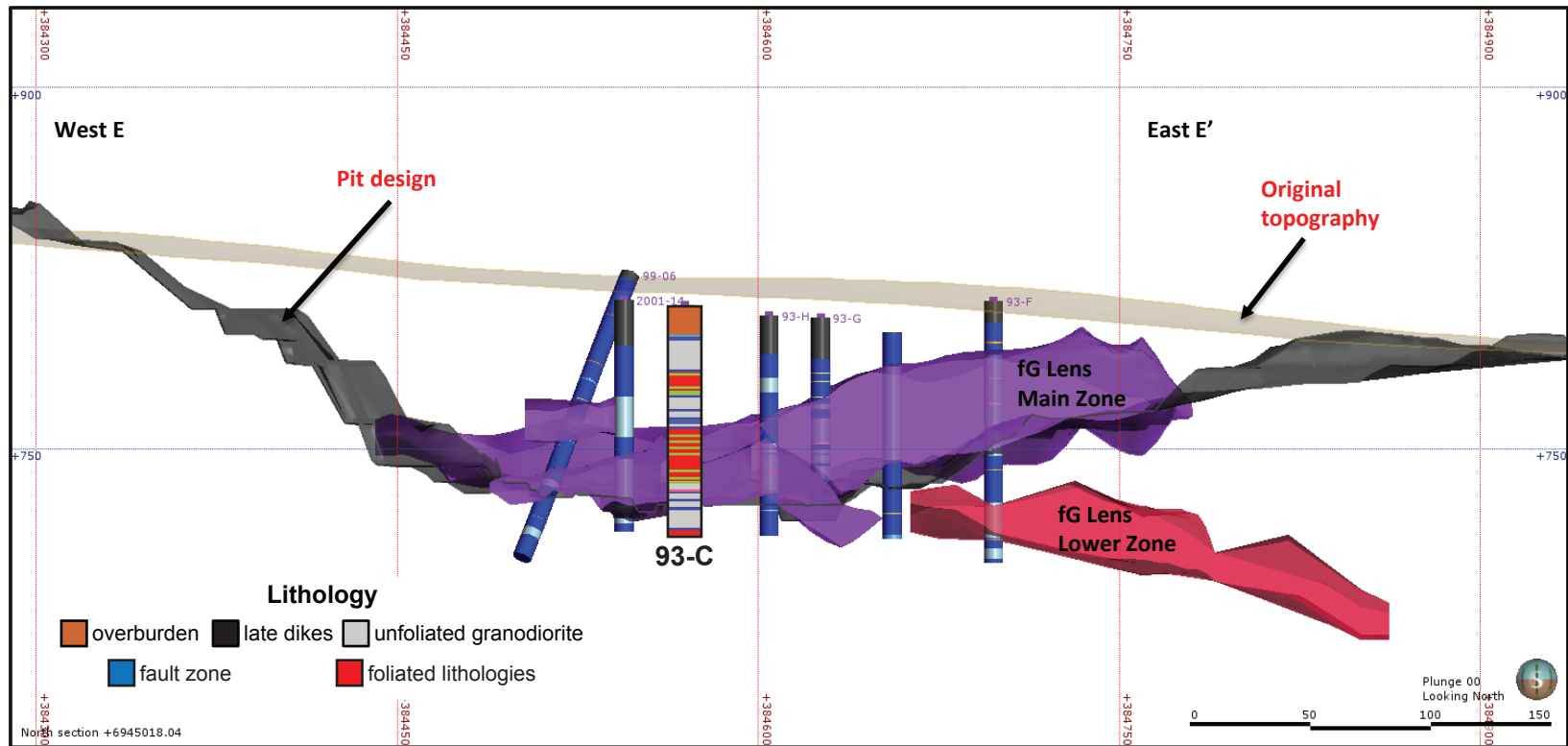
Area	Hole No.	Azimuth	Dip	Length (m)	Collar coordinates (NAD83, Zn 8)
Minto Main	93-C	0	-90	96.01	384569mE, 6945007mN



Above: Orthophoto of Minto area. Collar location of 93-C shown by yellow star, blue circles show collar locations of other drill holes in YGS collection.

Right: Simplified strip log with selected assays.





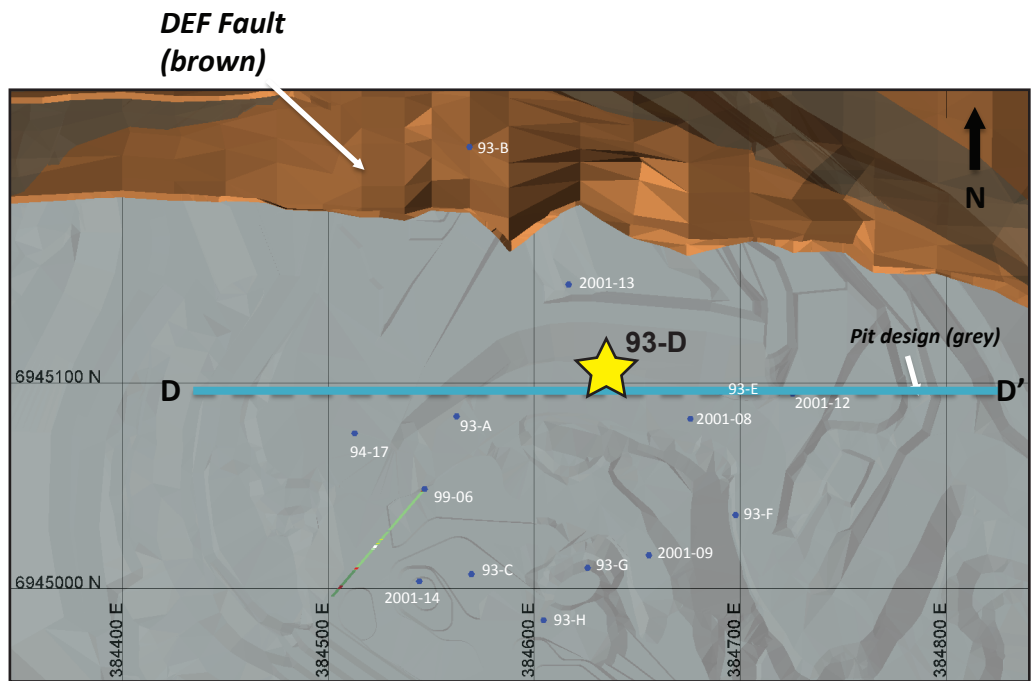
Above: Simplified vertical east-west cross-section through the Minto Main pit.

Right: Selected assays through Minto Main lower zone. Cu - Tot = sulphide and non-sulphide copper, Cu-Sol = non-sulphide copper

Hole	From (m)	To (m)	Interval (m)	Sample	Cu (%)	Cu-Sol (%)	Au (ppm)	Ag (ppm)
93-C	28.35	29.57	1.22	3159	0.3	0.0	0.1	0.6
93-C	29.57	30.48	0.91	3160	0.1	0.0	0.1	0.3
93-C	47.09	48.46	1.37	4560	0.2	0.0	0.1	0.3
93-C	76.81	77.42	0.61	4561	3.2	0.0	1.6	28.5
93-C	80.77	82.3	1.52	4564	3.4	0.0	1.7	31.0
93-C	82.3	84.43	2.13	4565	1.8	0.0	1.0	15.3
93-C	92.81	94.49	1.68	4562	0.5	0.0	0.1	4.1
93-C	94.49	96.01	1.52	4563	0.3	0.0	0.0	2.0

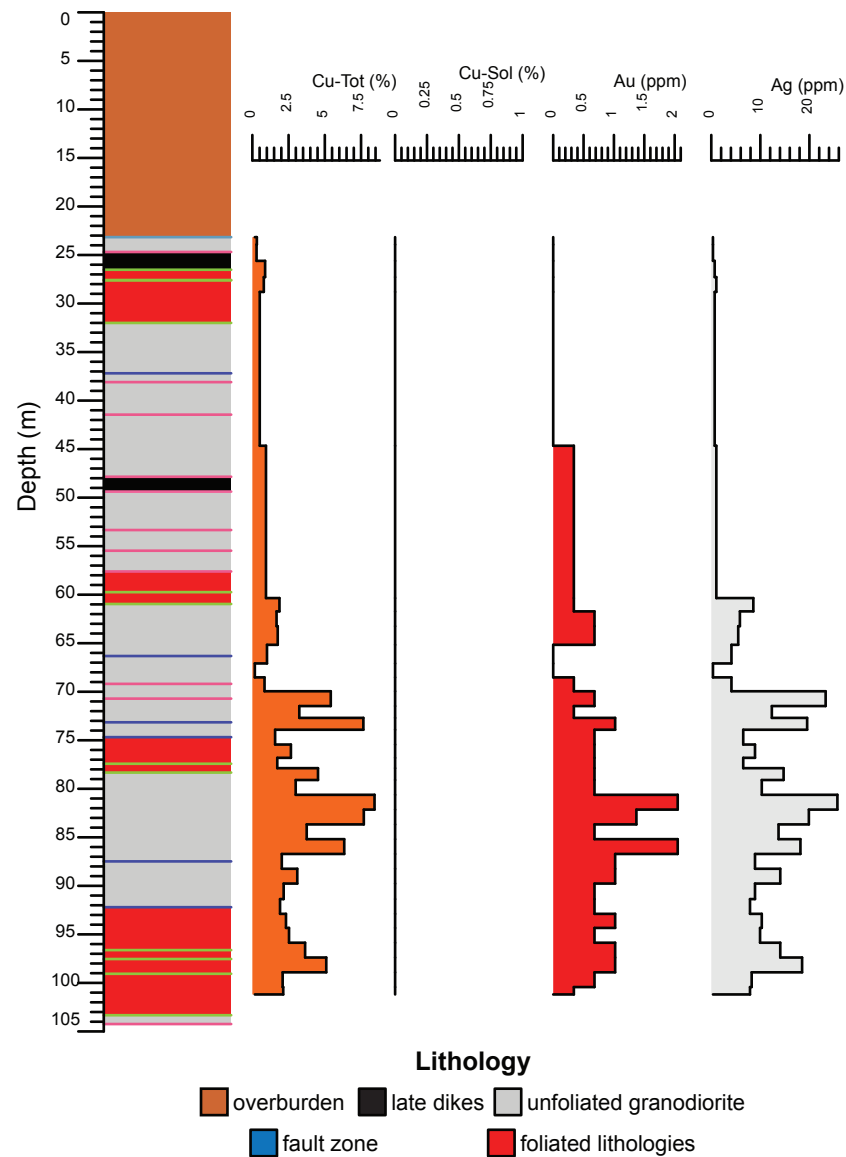
Minto deposit (Yukon MINFILE 115I 021, 022) Drill Hole: 93-D, Minto Main deposit

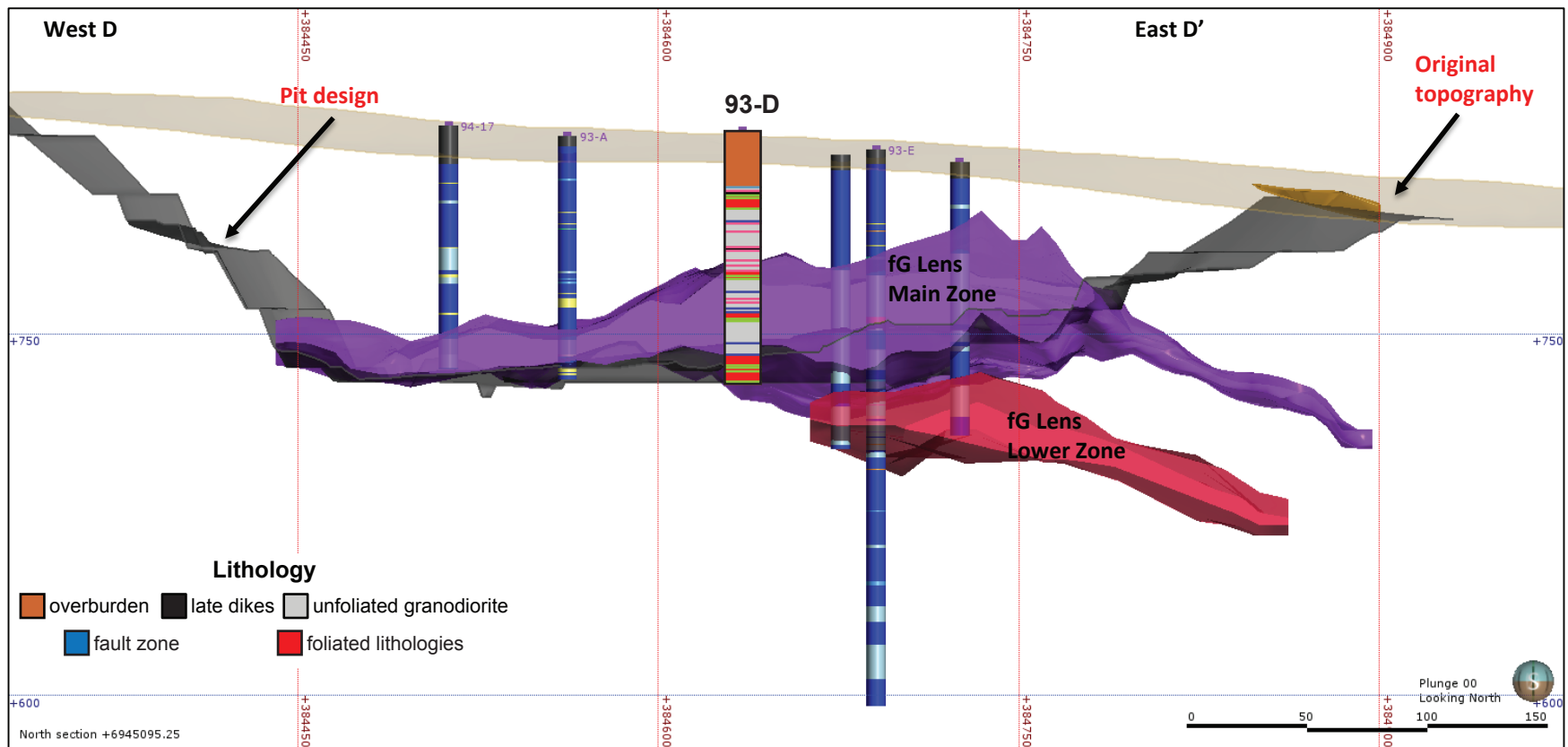
Area	Hole No.	Azimuth	Dip	Length (m)	Collar coordinates (NAD83, Zn 8)
Minto Main	93-D	0	-90	104.24	384634mE, 6945108mN



Above: Orthophoto of Minto area. Collar location of 93-D shown by yellow star, blue circles show collar locations of other drill holes in YGS collection.

Right: Simplified strip log with selected assays.





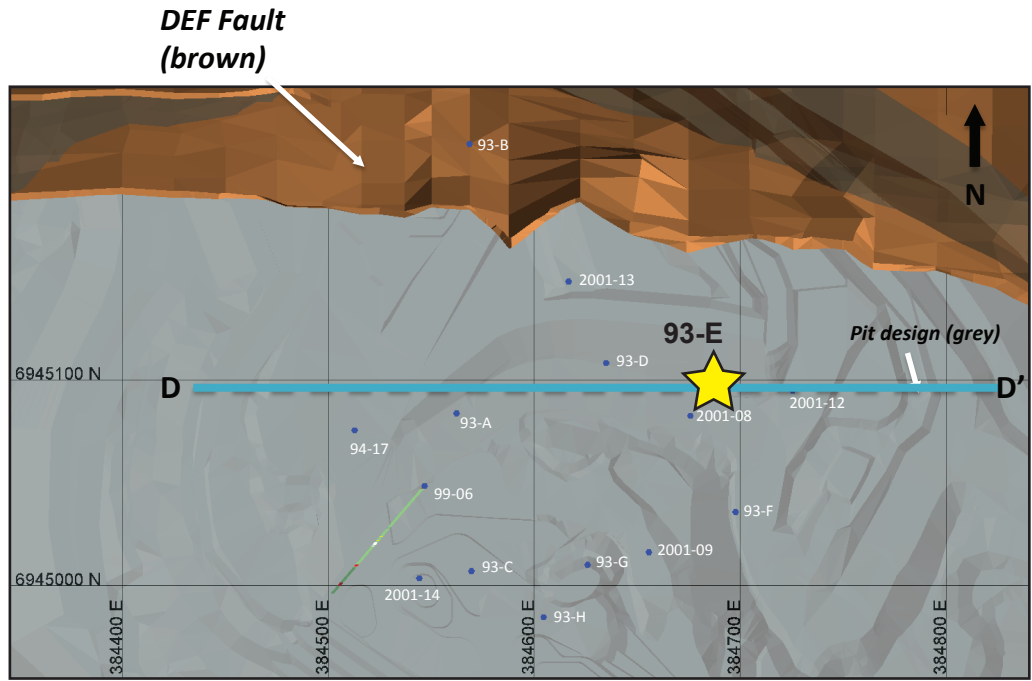
Above: Simplified vertical east-west cross-section through the Minto Main pit.

Right: Selected assays through Minto Main zone. Cu - Tot = sulphide and non-sulphide copper, Cu-Sol = non-sulphide copper

Hole	From (m)	To (m)	Interval (m)	Sample	Cu (%)	Cu-Sol (%)	Au (ppm)	Ag (ppm)
93-D	69.19	70.71	1.52	4607	0.8	0.0	0.3	4.1
93-D	70.71	72.24	1.53	4608	5.4	0.0	0.7	23.3
93-D	72.24	73.15	0.91	4609	3.2	0.0	0.3	12.3
93-D	73.15	74.68	1.53	4610	7.7	0.0	1.0	19.5
93-D	74.68	76.2	1.52	4611	1.6	0.0	0.7	6.5
93-D	76.2	77.42	1.22	4612	2.7	0.0	0.7	8.9
93-D	77.42	78.33	0.91	4613	1.7	0.0	0.7	6.5
93-D	78.33	79.86	1.53	4614	4.5	0.0	0.7	14.7
93-D	79.86	81.38	1.52	4615	3.0	0.0	0.7	10.3
93-D	81.38	82.91	1.53	4616	8.4	0.0	2.1	25.7
93-D	82.91	84.43	1.52	4617	7.7	0.0	1.4	19.9
93-D	84.43	85.95	1.52	4618	3.8	0.0	0.7	13.7

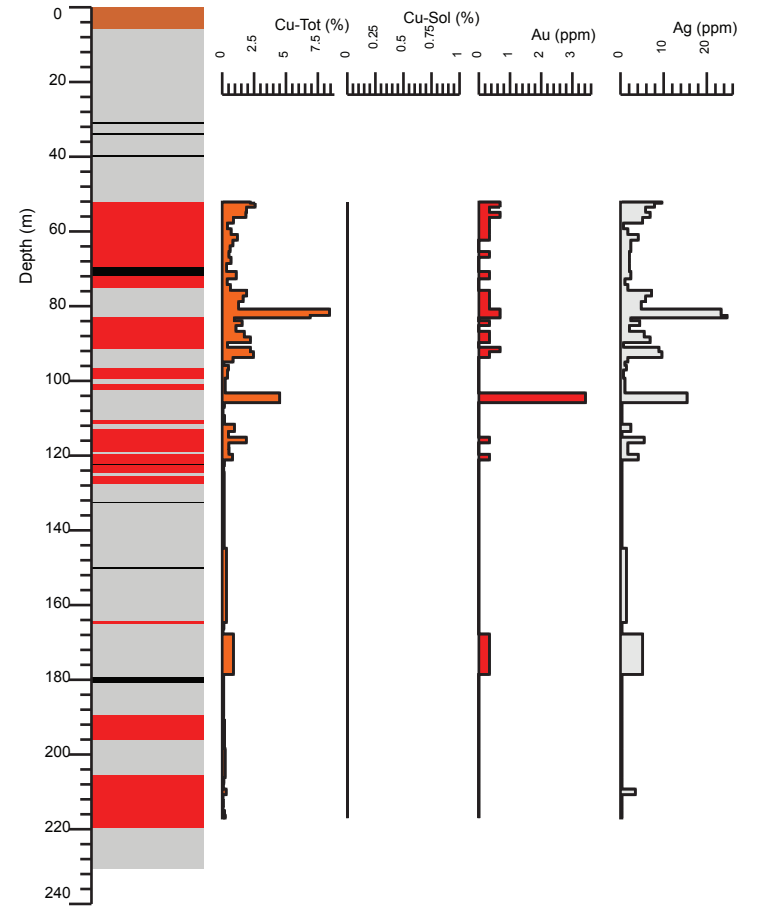
Minto deposit (Yukon MINFILE 115I 021, 022) Drill Hole: 93-E, Minto Main deposit

Area	Hole No.	Azimuth	Dip	Length (m)	Collar coordinates (NAD83, Zn 8)
Minto Main	93-E	0	-90	230.73	384690mE, 6945095mN



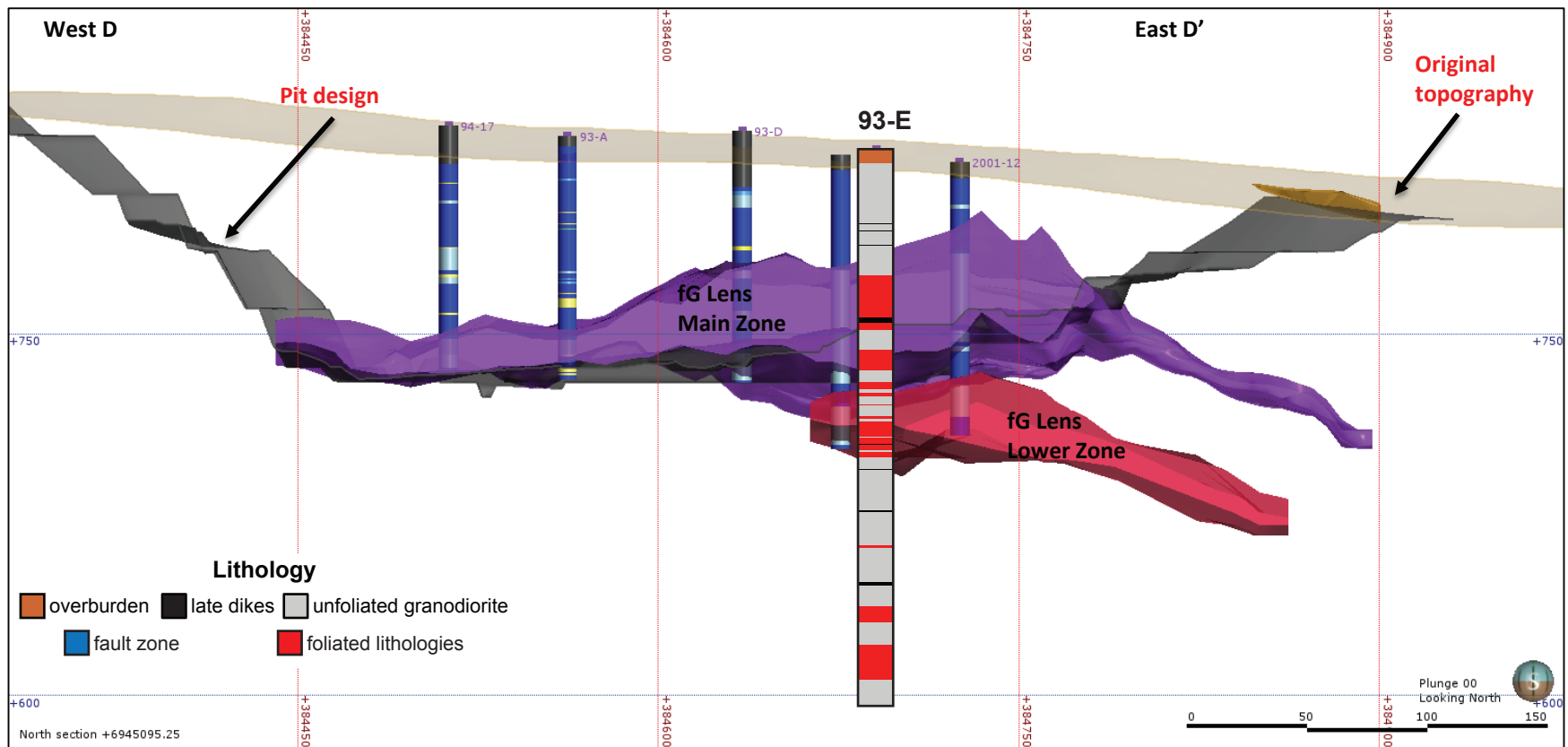
Above: Orthophoto of Minto area. Collar location of 93-E shown by yellow star, blue circles show collar locations of other drill holes in YGS collection.

Right: Simplified strip log with selected assays.



Lithology

- overburden
- late dikes
- unfoliated granodiorite
- fault zone
- foliated lithologies



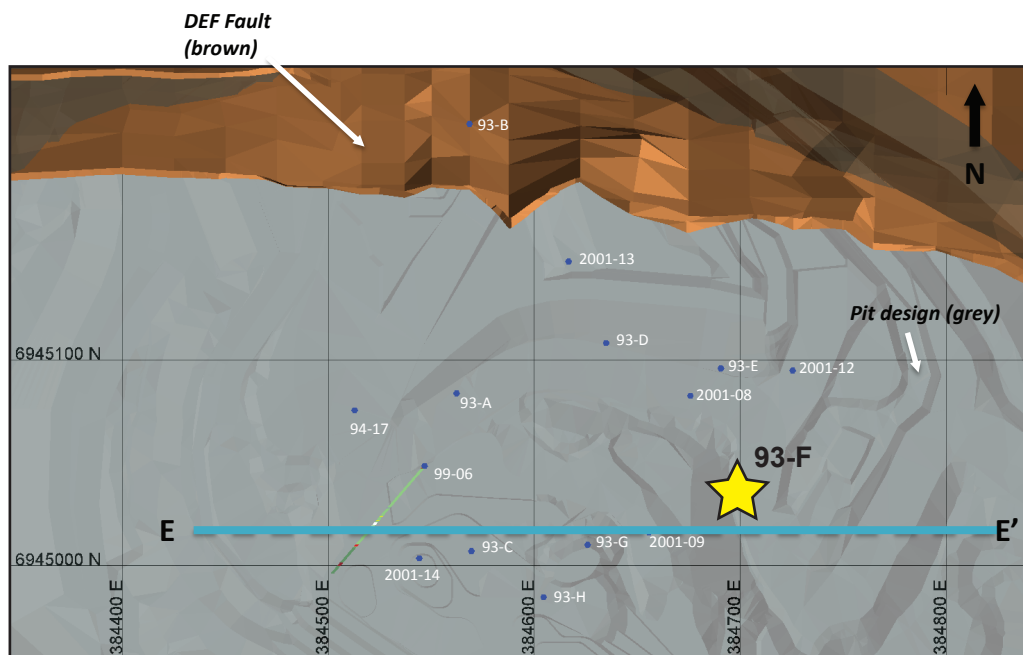
Above: Simplified vertical east-west cross-section through the Minto Main pit.

Right: Selected assays through Minto Main lower zone. Cu - Tot = sulphide and non-sulphide copper, Cu-Sol = non-sulphide copper

Hole	From (m)	To (m)	Interval (m)	Sample	Cu (%)	Cu-Sol (%)	Au (ppm)	Ag (ppm)
93-E	74.98	76.5	1.52	4667	0.6	0.0	0.0	1.7
93-E	76.5	78.03	1.53	4668	1.9	0.0	0.3	7.2
93-E	78.03	79.55	1.52	4669	1.6	0.0	0.3	5.8
93-E	79.55	81.99	2.44	4670	1.3	0.0	0.3	4.8
93-E	81.99	82.91	0.92	4671	8.4	0.0	0.7	23.3
93-E	82.91	83.36	0.45	4672	6.9	0.0	0.7	24.7
93-E	83.36	84.43	1.07	4673	1.0	0.0	0.0	2.4
93-E	84.43	85.95	1.52	4674	1.6	0.0	0.3	4.5
93-E	85.95	87.48	1.53	4675	1.1	0.0	0.0	2.1
93-E	87.48	89	1.52	4676	1.7	0.0	0.3	5.5
93-E	89	90.53	1.53	4677	2.2	0.0	0.3	6.9
93-E	90.53	91.44	0.91	4678	0.4	0.0	0.0	0.7

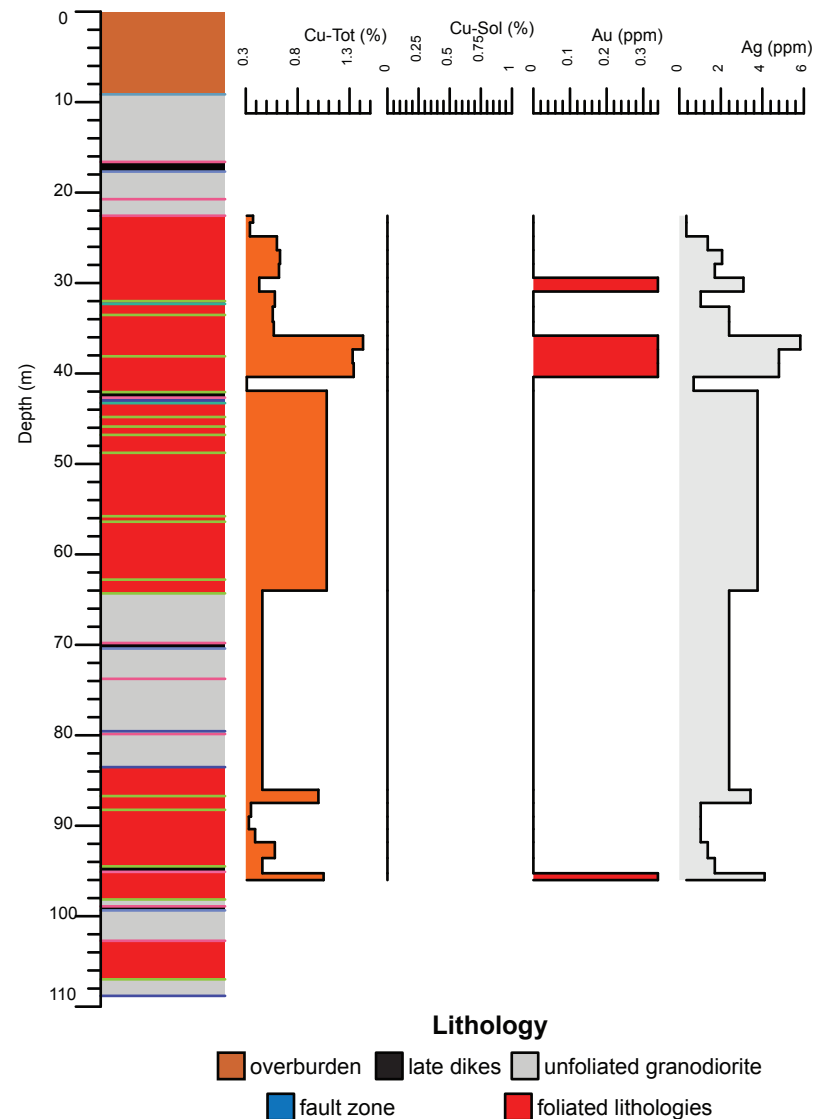
Minto deposit (Yukon MINFILE 115I 021, 022) Drill Hole: 93-F, Minto Main deposit

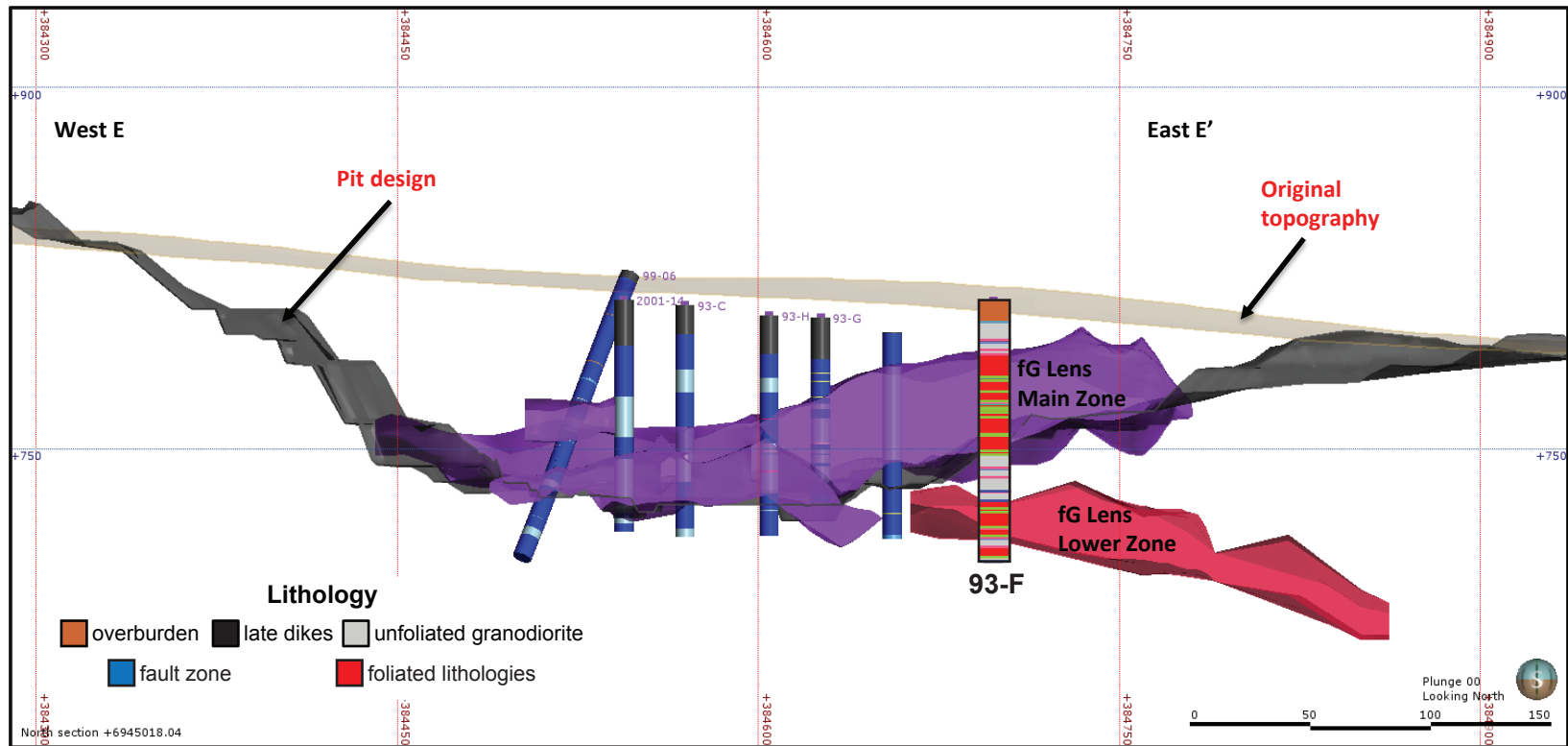
Area	Hole No.	Azimuth	Dip	Length (m)	Collar coordinates (NAD83, Zn 8)
Minto Main	93-F	0	-90	108.81	384697mE, 6945035mN



Above: Orthophoto of Minto area. Collar location of 93-F shown by yellow star, blue circles show collar locations of other drill holes in YGS collection.

Right: Simplified strip log with selected assays.





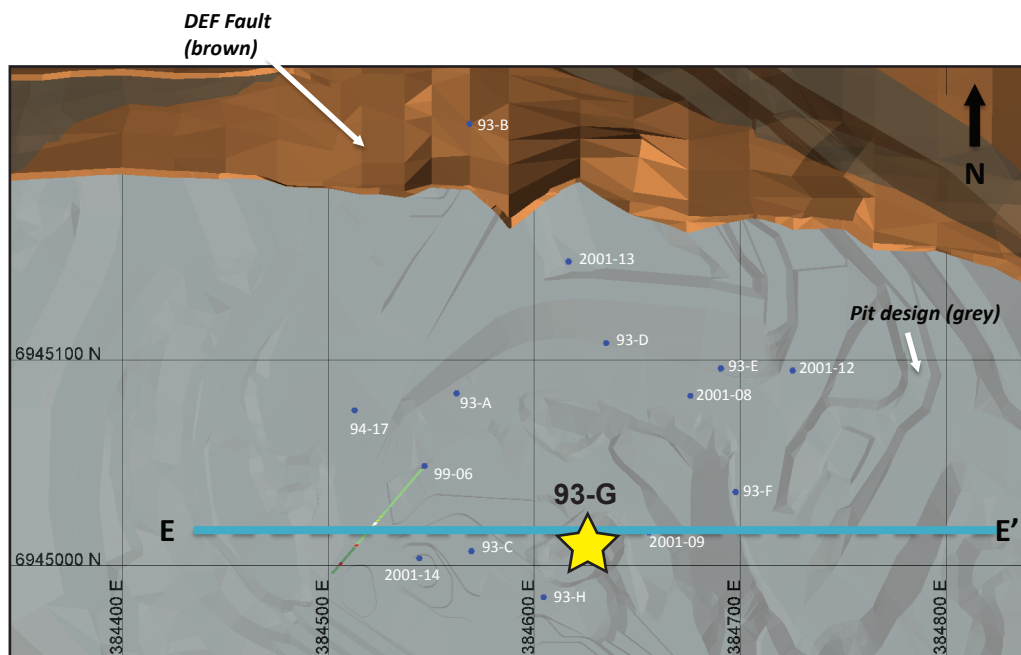
Above: Simplified vertical east-west cross-section through the Minto Main pit.

Right: Selected assays through Minto Main lower zone. Cu - Tot = sulphide and non-sulphide copper, Cu-Sol = non-sulphide copper

Hole	From (m)	To (m)	Interval (m)	Sample	Cu (%)	Cu-Sol (%)	Au (ppm)	Ag (ppm)
93-F	33.53	35.05	1.52	4586	0.6	0.0	0.0	2.4
93-F	35.05	36.58	1.53	4587	0.6	0.0	0.0	2.4
93-F	36.58	38.1	1.52	4588	1.4	0.0	0.3	5.8
93-F	38.1	39.62	1.52	4589	1.3	0.0	0.3	4.8
93-F	39.62	41.15	1.53	4590	1.3	0.0	0.3	4.8
93-F	41.15	42.67	1.52	4591	0.3	0.0	0.0	0.7
93-F	42.67	44.81	2.14	4592	1.1	0.0	0.0	3.8
93-F	85.34	86.72	1.38	4991	0.5	0.0	0.0	2.4
93-F	86.72	88.24	1.52	4992	1.0	0.0	0.0	3.4
93-F	88.24	89.76	1.52	4993	0.4	0.0	0.0	1.0

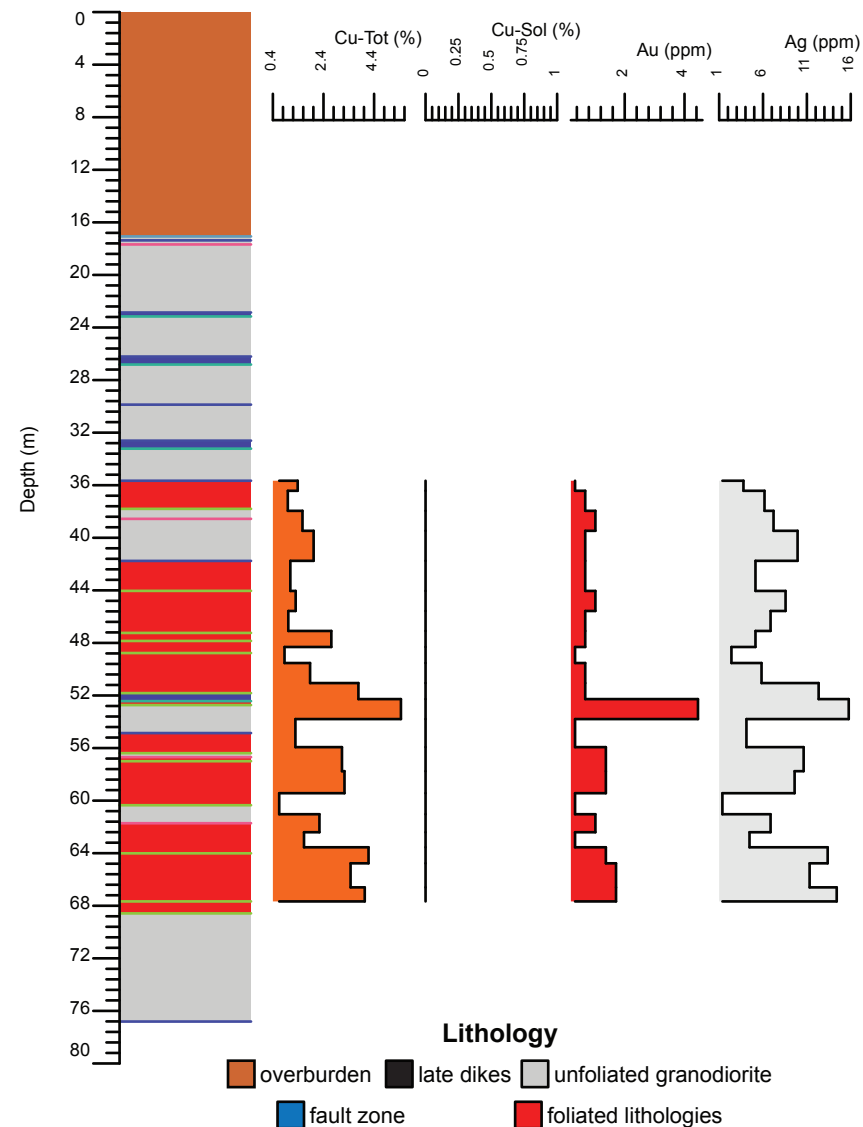
Minto deposit (Yukon MINFILE 115I 021, 022) Drill Hole: 93-G, Minto Main deposit

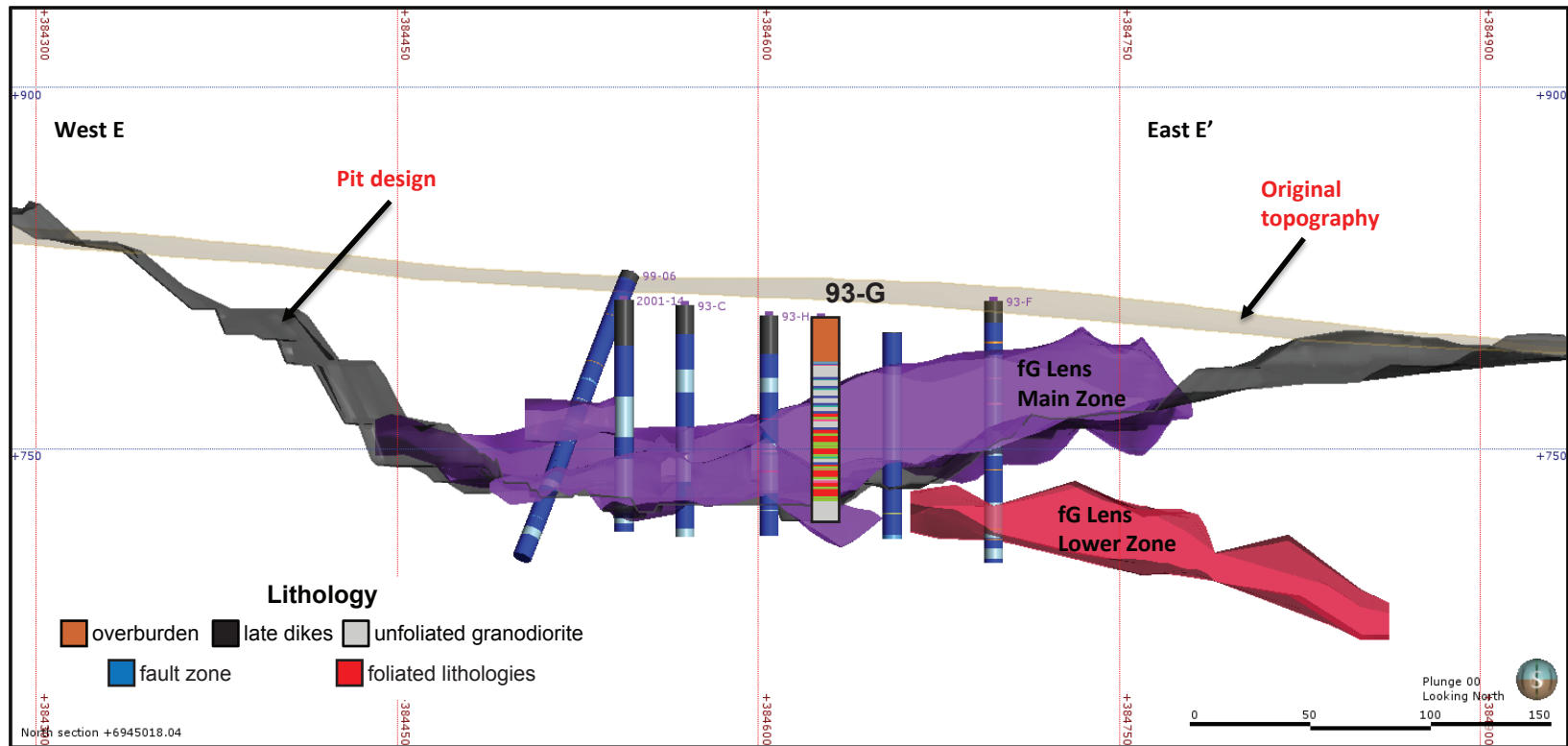
Area	Hole No.	Azimuth	Dip	Length (m)	Collar coordinates (NAD83, Zn 8)
M into Main	93-G	0	-90	76.81	384625mE, 6945010mN



Above: Orthophoto of Minto area. Collar location of 93-G shown by yellow star, blue circles show collar locations of other drill holes in YGS collection.

Right: Simplified strip log with selected assays.





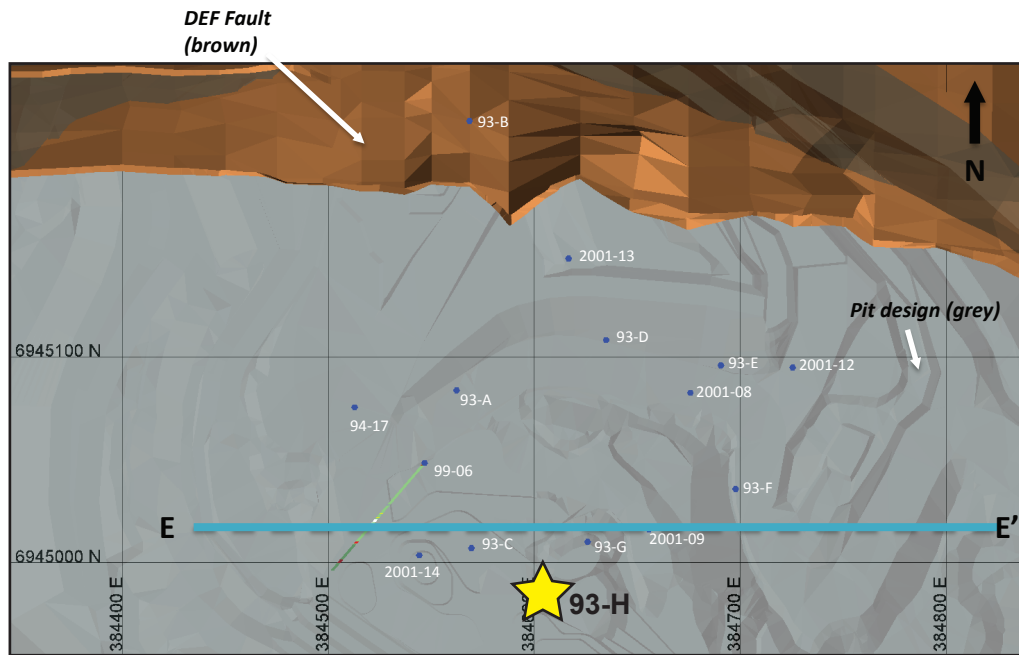
Above: Simplified vertical east-west cross-section through the Minto Main pit.

Right: Selected assays through Minto Main lower zone. Cu - Tot = sulphide and non-sulphide copper, Cu-Sol = non-sulphide copper

Hole	From (m)	To (m)	Interval (m)	Sample	Cu (%)	Cu-Sol (%)	Au (ppm)	Ag (ppm)
93-G	43.28	44.81	1.53	4576	1.1	0.0	0.7	5.1
93-G	44.81	46.33	1.52	4577	1.3	0.0	1.0	8.6
93-G	46.33	47.85	1.52	4578	1.0	0.0	0.7	6.9
93-G	47.85	48.77	0.92	4649	2.7	0.0	0.7	5.1
93-G	48.77	50.29	1.52	4650	0.9	0.0	0.3	2.4
93-G	50.29	51.82	1.53	2151	1.9	0.0	0.7	5.8
93-G	51.82	52.73	0.91	2152	3.8	0.0	0.7	12.3
93-G	52.73	54.86	2.13	2153	5.5	0.0	4.5	15.8
93-G	54.86	57	2.14	2154	1.3	0.0	0.3	4.1
93-G	57	58.52	1.52	2155	3.1	0.0	1.4	10.6
93-G	58.52	60.35	1.83	2156	3.2	0.0	1.4	9.6

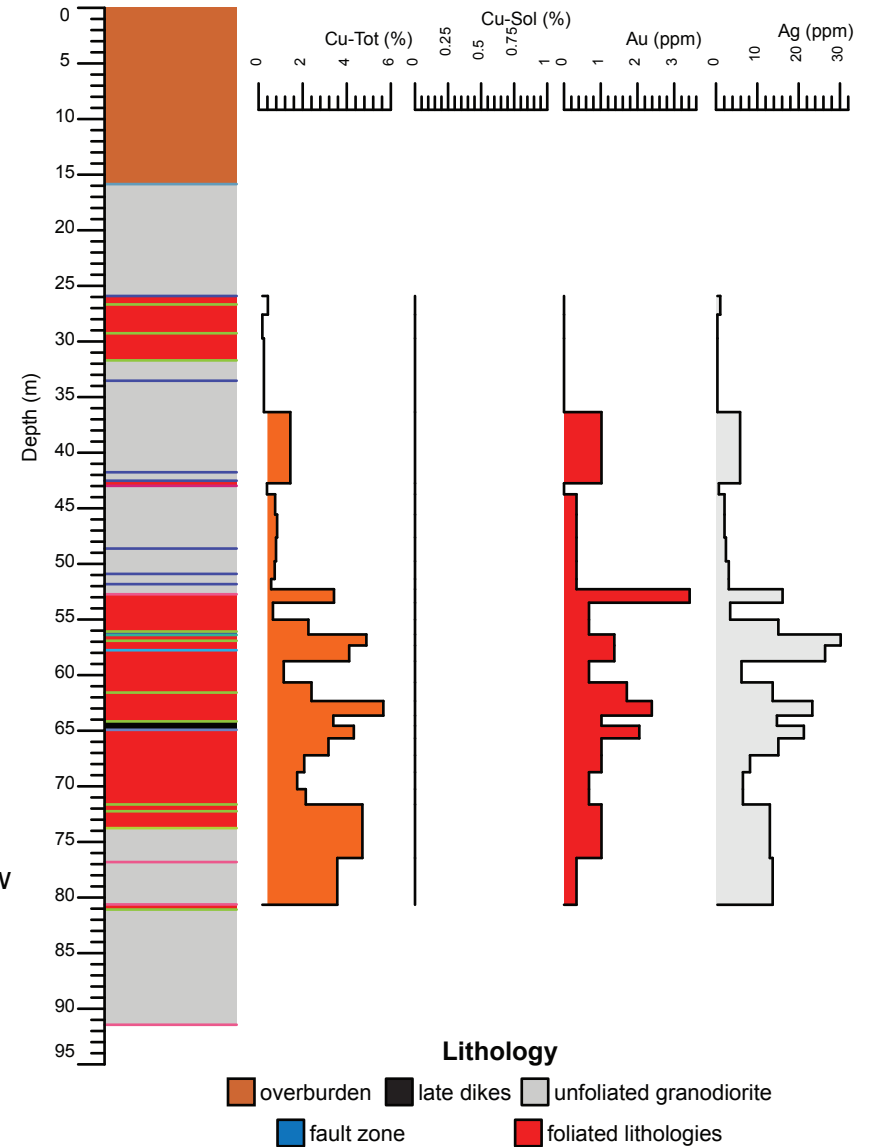
Minto deposit (Yukon MINFILE 115I 021, 022) Drill Hole: 93-H, Minto Main deposit

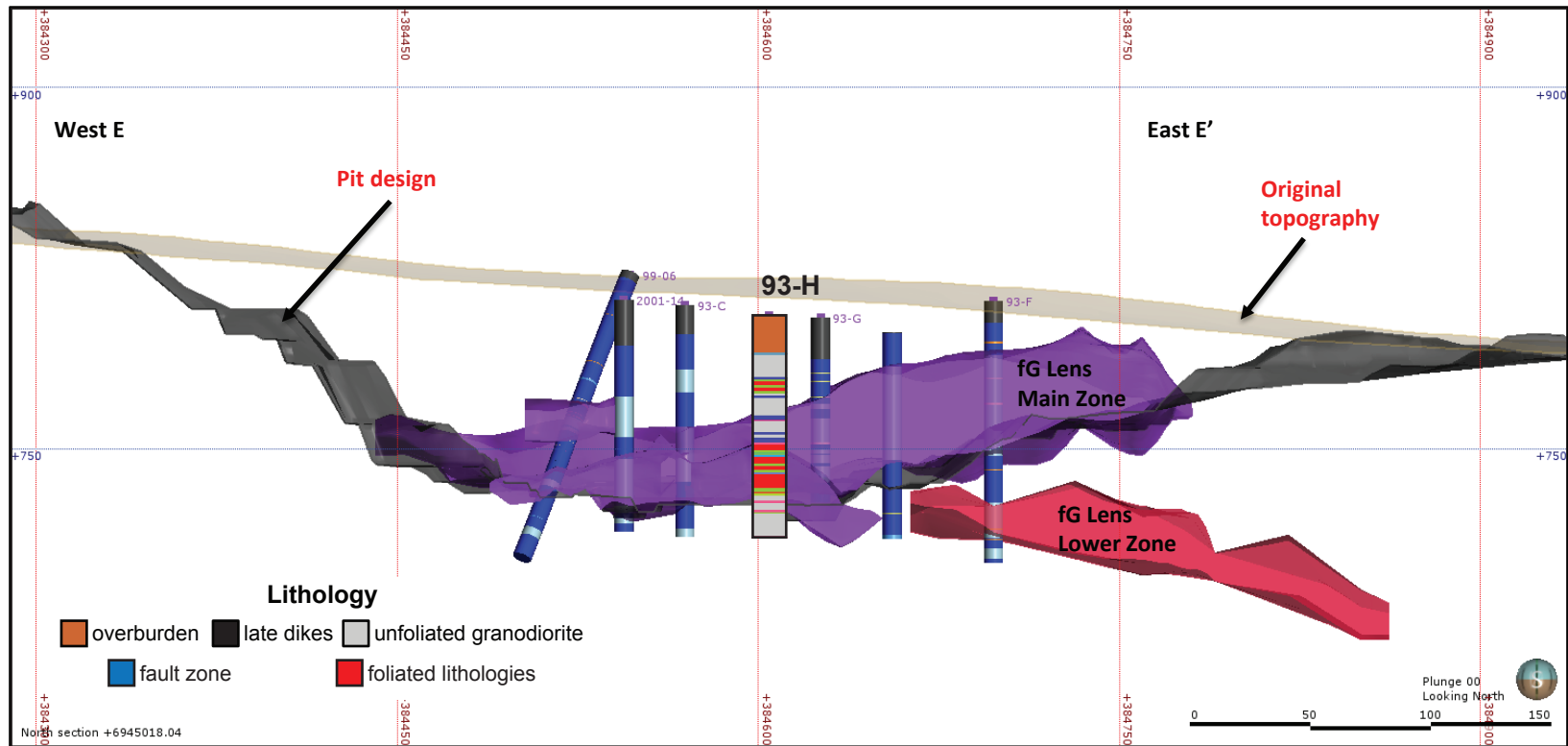
Area	Hole No.	Azimuth	Dip	Length (m)	Collar coordinates (NAD83, Zn 8)
Minto Main	93-H	0	-90	91.44	384604mE, 6944984mN



Above: Orthophoto of Minto area. Collar location of 93-H shown by yellow star, blue circles show collar locations of other drill holes in YGS collection.

Right: Simplified strip log with selected assays.





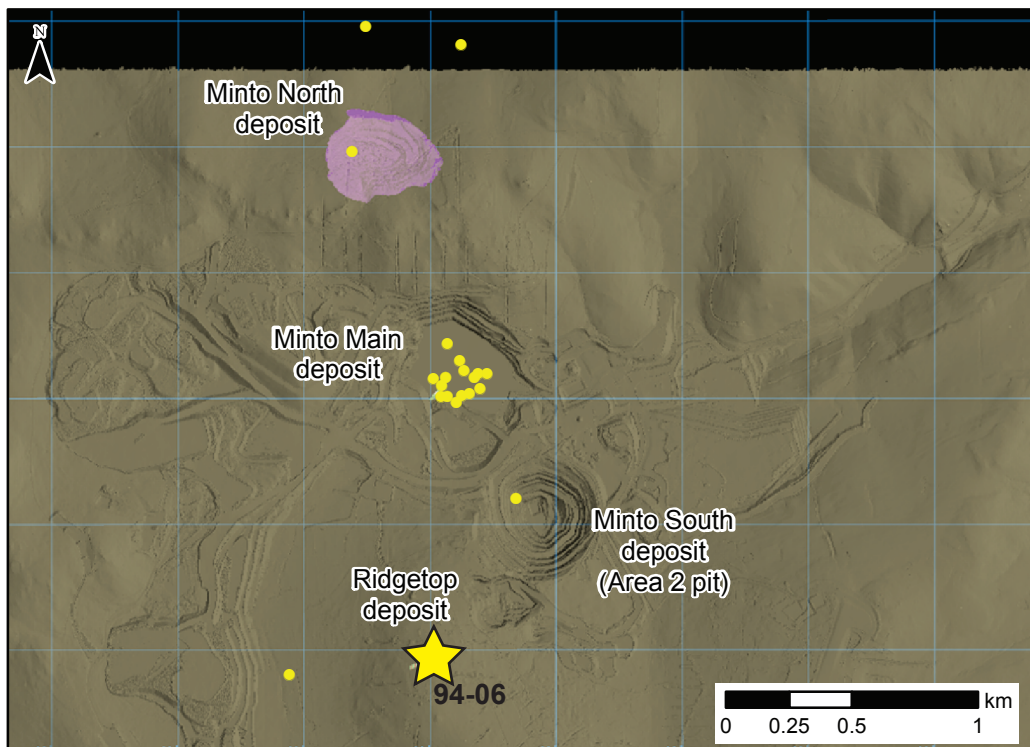
Above: Simplified vertical east-west cross-section through the Minto Main pit.

Right: Selected assays through Minto Main lower zone. Cu - Tot = sulphide and non-sulphide copper, Cu-Sol = non-sulphide copper

Hole	From (m)	To (m)	Interval (m)	Sample	Cu (%)	Cu-Sol (%)	Au (ppm)	Ag (ppm)
93-H	48.62	50.9	2.28	4604	0.8	0.0	0.3	2.4
93-H	50.9	51.82	0.92	4631	0.7	0.0	0.3	3.1
93-H	51.82	52.73	0.91	4632	0.6	0.0	0.3	3.1
93-H	52.73	54.25	1.52	4633	3.4	0.0	3.4	16.1
93-H	54.25	55.78	1.53	4634	0.7	0.0	0.7	3.4
93-H	55.78	56.91	1.13	4635	2.3	0.0	0.7	15.1
93-H	56.91	57.76	0.85	4636	4.9	0.0	1.4	30.2
93-H	57.76	59.74	1.98	4637	4.1	0.0	1.4	26.4
93-H	59.74	61.57	1.83	4638	1.1	0.0	0.7	6.2
93-H	61.57	63.09	1.52	4639	2.4	0.0	1.7	13.7
93-H	63.09	64.16	1.07	4640	5.7	0.0	2.4	23.3

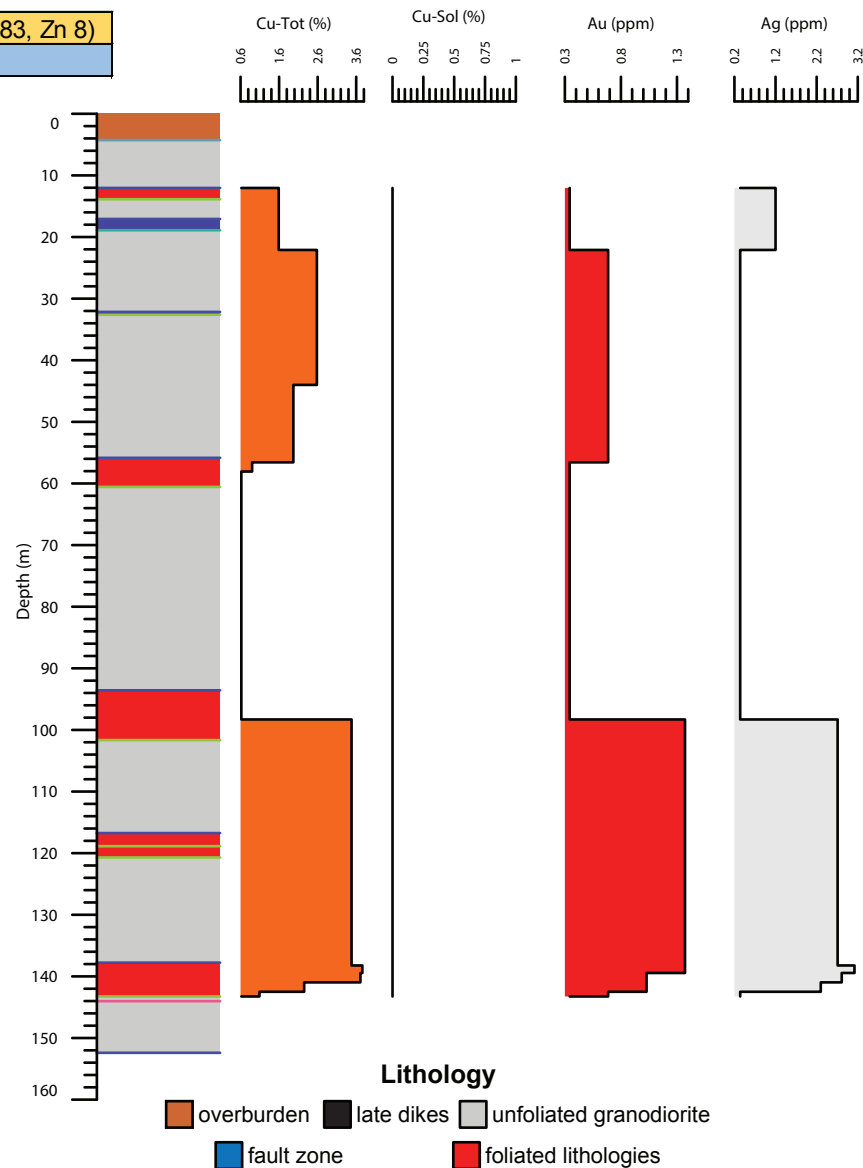
Minto deposit (Yukon MINFILE 115I 021, 022) Drill Hole: 94-06, Ridgetop deposit

Area	Hole No.	Azimuth	Dip	Length (m)	Collar coordinates (NAD83, Zn 8)
Ridgetop	94-06	249	-45	152.40	384517mE, 6943968mN



Above: Orthophoto of Minto area. Collar location of 94-06 shown by yellow star, yellow circles show collar locations of other drill holes in YGS collection.

Right: Simplified strip log with selected assays.



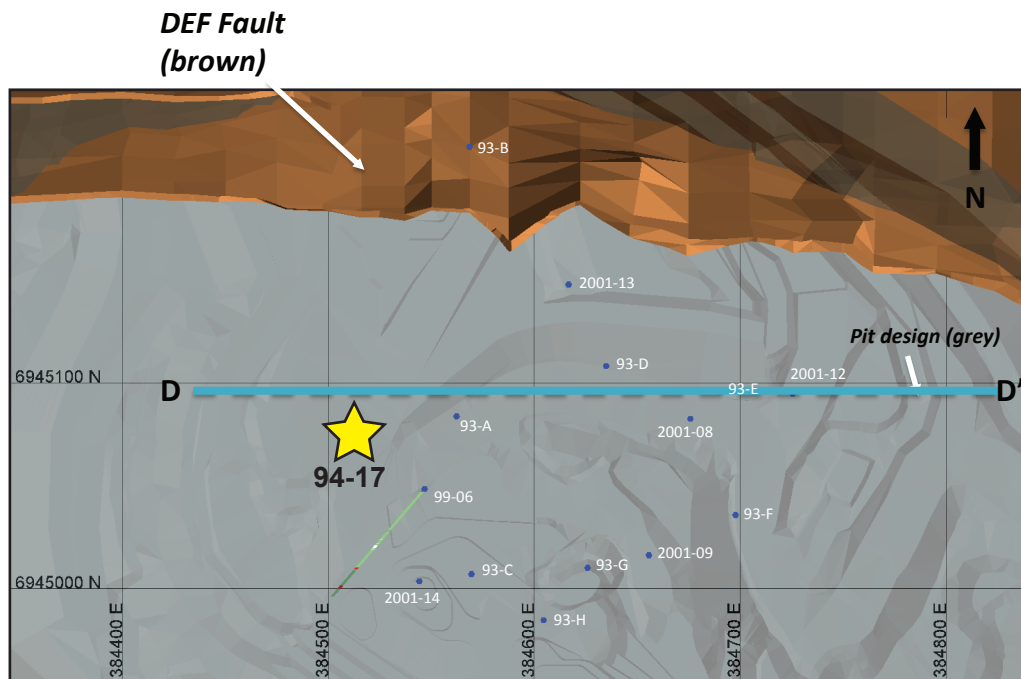
Hole	From (m)	To (m)	Interval (m)	Sample	Cu (%)	Cu-Sol (%)	Au (ppm)	Ag (ppm)
94-06	12.04	13.87	1.83	4712	1.6	0.0	0.3	1.2
94-06	32.16	32.61	0.45	4713	2.6	0.0	0.7	0.3
94-06	55.84	57.3	1.46	4714	2.0	0.0	0.7	0.3
94-06	57.3	58.83	1.53	4715	0.9	0.0	0.3	0.3
94-06	58.83	60.56	1.73	4716	0.6	0.0	0.3	0.3
94-06	137.77	138.68	0.91	4717	3.5	0.0	1.4	2.7
94-06	138.68	140.21	1.53	4718	3.8	0.0	1.4	3.1
94-06	140.21	141.73	1.52	4719	3.7	0.0	1.0	2.8
94-06	141.73	143.26	1.53	4720	2.3	0.0	1.0	2.3
94-06	143.26	144.02	0.76	4721	1.1	0.0	0.7	0.3

Above: Selected assays from 94-06. Cu - Tot = sulphide and non-sulphide copper, Cu-Sol = non-sulphide copper

Note: a section isn't provided because this is an exploration hole and there is not enough geologic information nearby to create a meaningful section.

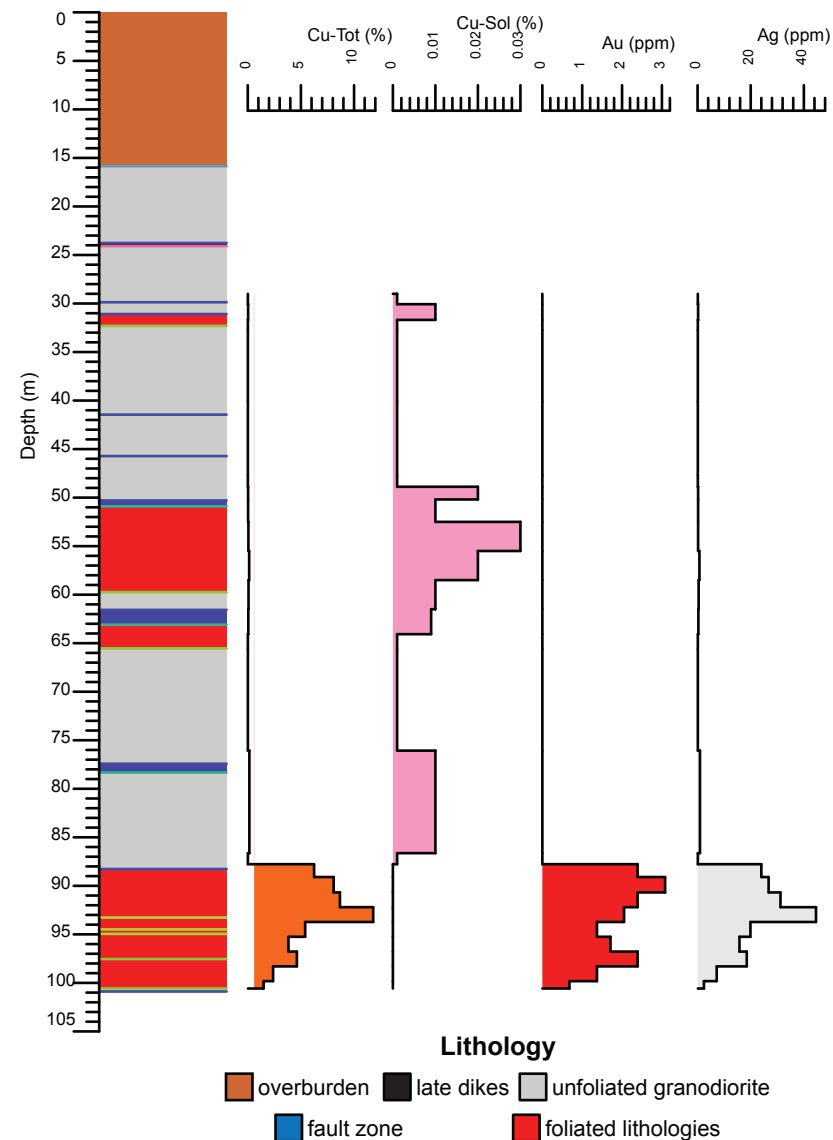
Minto deposit (Yukon MINFILE 115I 021, 022) Drill Hole: 94-17, Minto Main deposit

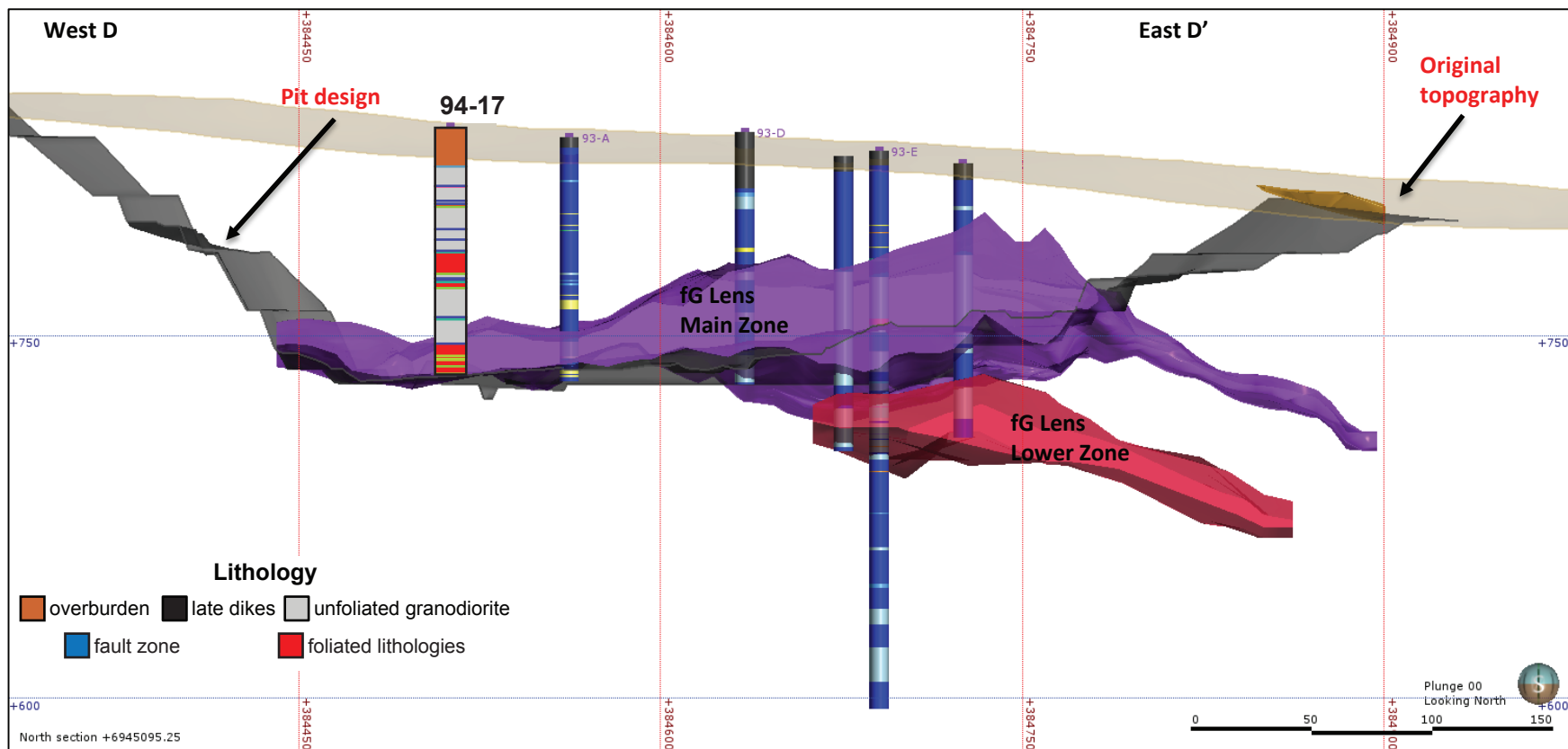
Area	Hole No.	Azimuth	Dip	Length (m)	Collar coordinates (NAD83, Zn 8)
Minto Main	94-17	0	-90	100.89	384512mE, 6945075mN



Above: Orthophoto of Minto area. Collar location of 94-17 shown by yellow star, blue circles show collar locations of other drill holes in YGS collection.

Right: Simplified strip log with selected assays.





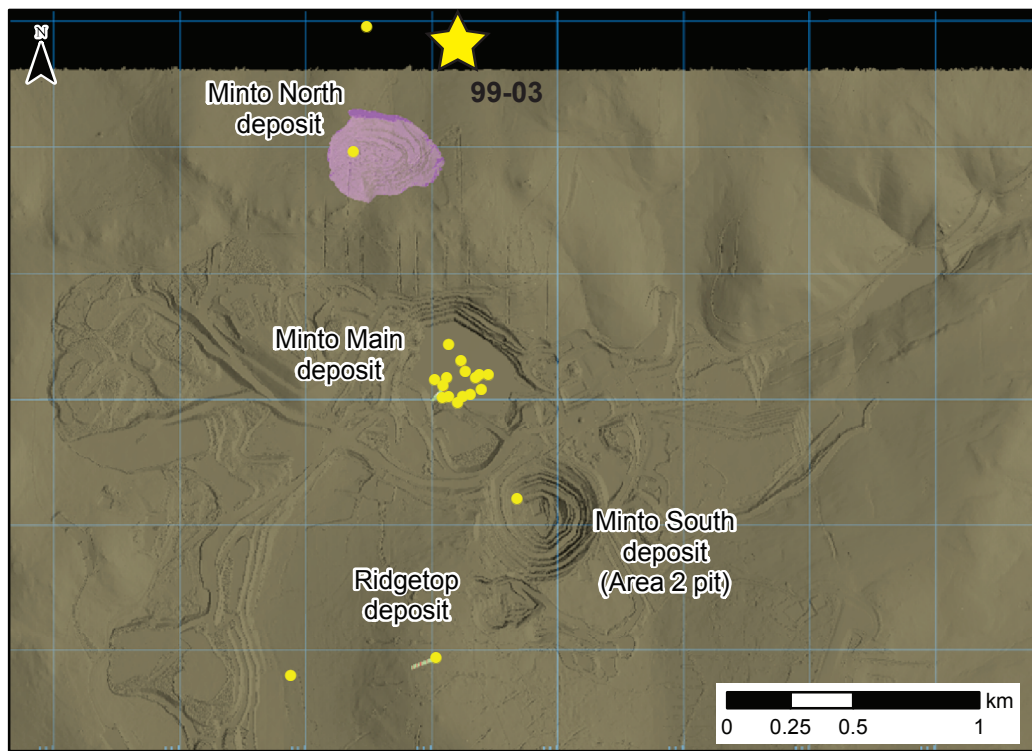
Above: Simplified vertical east-west cross-section through the Minto Main pit.

Right: Selected assays through Minto Main lower zone. Cu - Tot = sulphide and non-sulphide copper, Cu-Sol = non-sulphide copper

Hole	From (m)	To (m)	Interval (m)	Sample	Cu (%)	Cu-Sol (%)	Au (ppm)	Ag (ppm)
94-17	87.27	88.27	1	B461065	0.0	0.0	0.0	0.1
94-17	88.27	89.92	1.65	4791	6.2	0.0	2.4	24.0
94-17	89.92	91.44	1.52	4792	8.1	0.0	3.1	26.7
94-17	91.44	92.96	1.52	4793	8.7	0.0	2.4	31.2
94-17	92.96	94.49	1.53	4794	11.8	0.0	2.1	44.6
94-17	94.49	96.01	1.52	4795	5.4	0.0	1.4	19.9
94-17	96.01	97.54	1.53	4796	3.8	0.0	1.7	15.8
94-17	97.54	99.06	1.52	4797	4.6	0.0	2.4	18.5
94-17	99.06	100.58	1.52	4798	2.4	0.0	1.4	7.2
94-17	100.58	100.89	0.31	4799	1.5	0.0	0.7	2.4

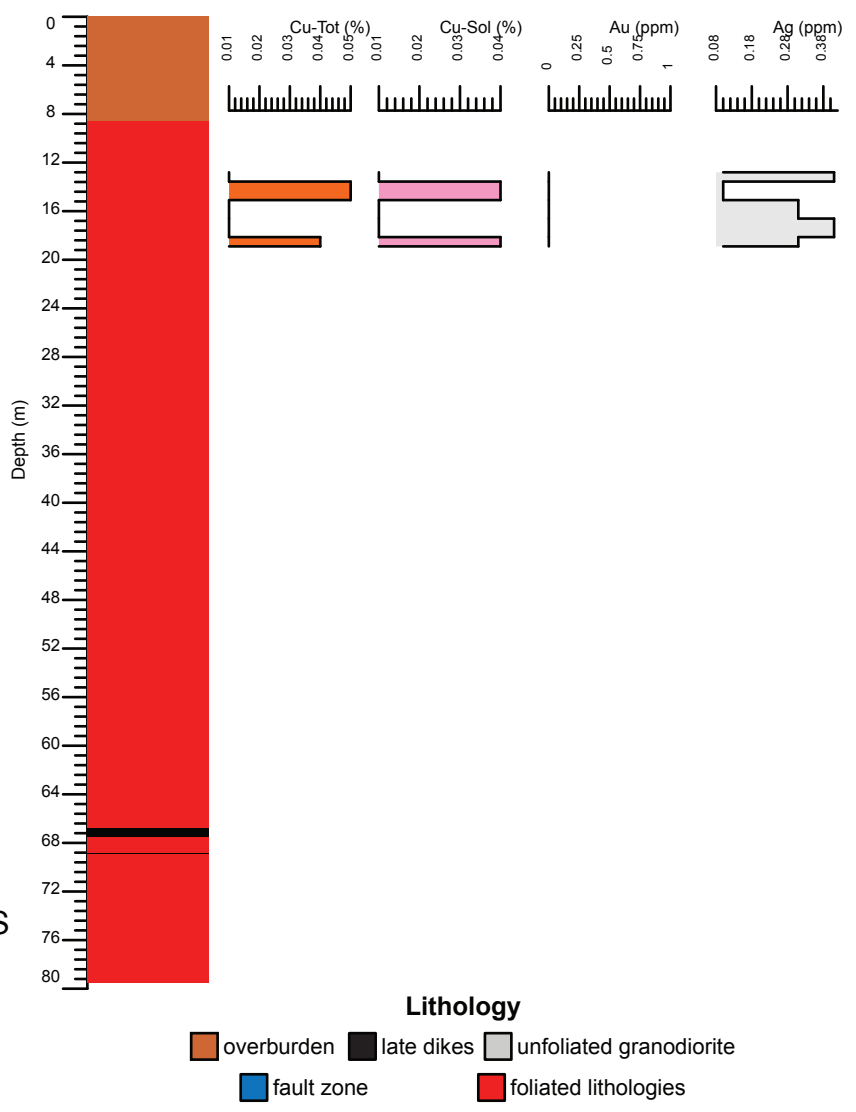
Minto deposit (Yukon MINFILE 115I 021, 022) Drill Hole: 99-03, Exploration north of Minto North deposit

Area	Hole No.	Azimuth	Dip	Length (m)	Collar coordinates (NAD83, Zn 8)
Exploration north of Minto North	99-03	0	-90	79.55	384622mE, 6946401mN



Above: Orthophoto of Minto area. Collar location of 99-03 shown by yellow star, yellow circles show collar locations of other drill holes in YGS collection.

Right: Simplified strip log with selected assays.



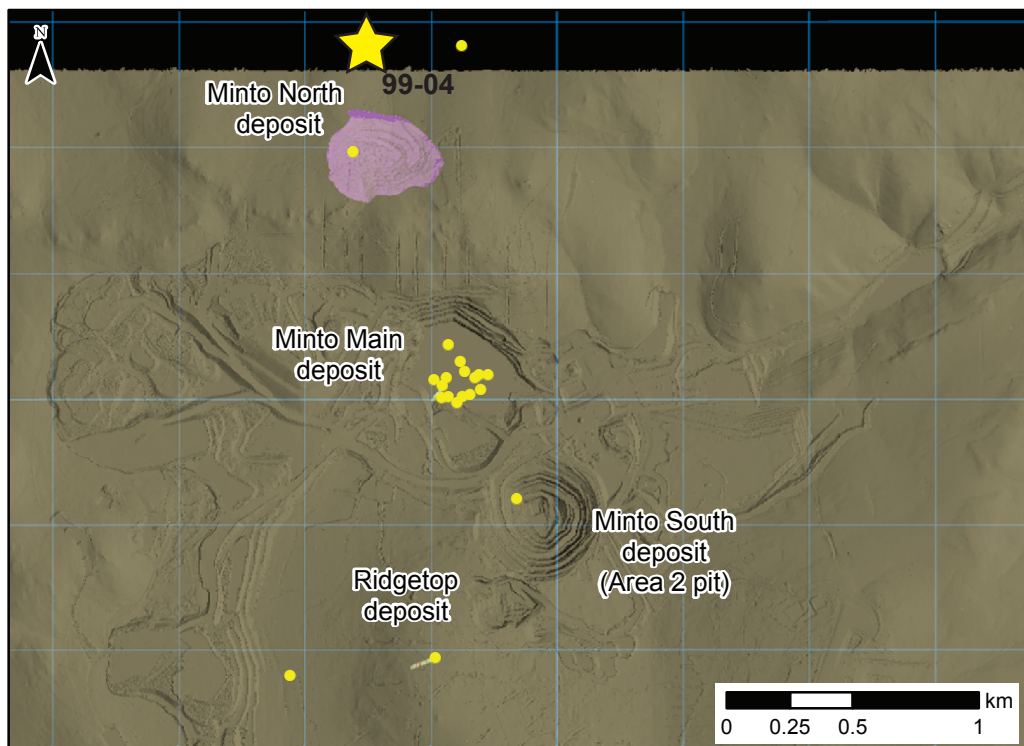
Hole	From (m)	To (m)	Interval (m)	Sample	Cu (%)	Cu-Sol (%)	Au (ppm)	Ag (ppm)
99-03	12.8	14.33	1.53	21729	0.0	0.0	0.0	0.4
99-03	14.33	15.85	1.52	21730	0.1	0.0	0.0	0.1
99-03	15.85	17.37	1.52	21731	0.0	0.0	0.0	0.3
99-03	17.37	18.9	1.53	21732	0.0	0.0	0.0	0.4
99-03	18.9	20.42	1.52	21733	0.0	0.0	0.0	0.3

Above: Selected assays from 99-03. Cu - Tot = sulphide and non-sulphide copper, Cu-Sol = non-sulphide copper

Note: a section isn't provided because this is an exploration hole and there is not enough geologic information nearby to create a meaningful section.

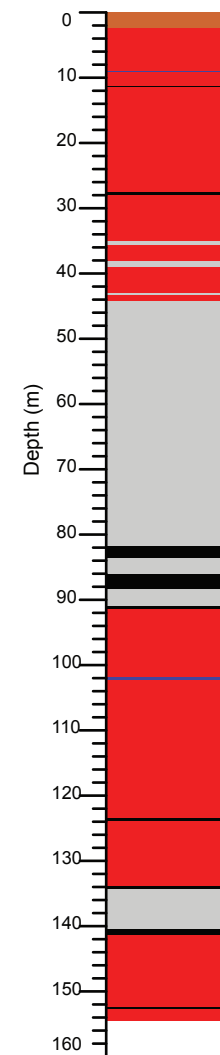
Minto deposit (Yukon MINFILE 115I 021, 022) Drill Hole: 99-04, Exploration north of Minto North deposit

Area	Hole No.	Azimuth	Dip	Length (m)	Collar coordinates (NAD83, Zn 8)
Exploration north of Minto North	99-04	0	-90	154.53	384243mE, 6946475mN



Above: Orthophoto of Minto area. Collar location of 99-04 shown by yellow star, yellow circles show collar locations of other drill holes in YGS collection.

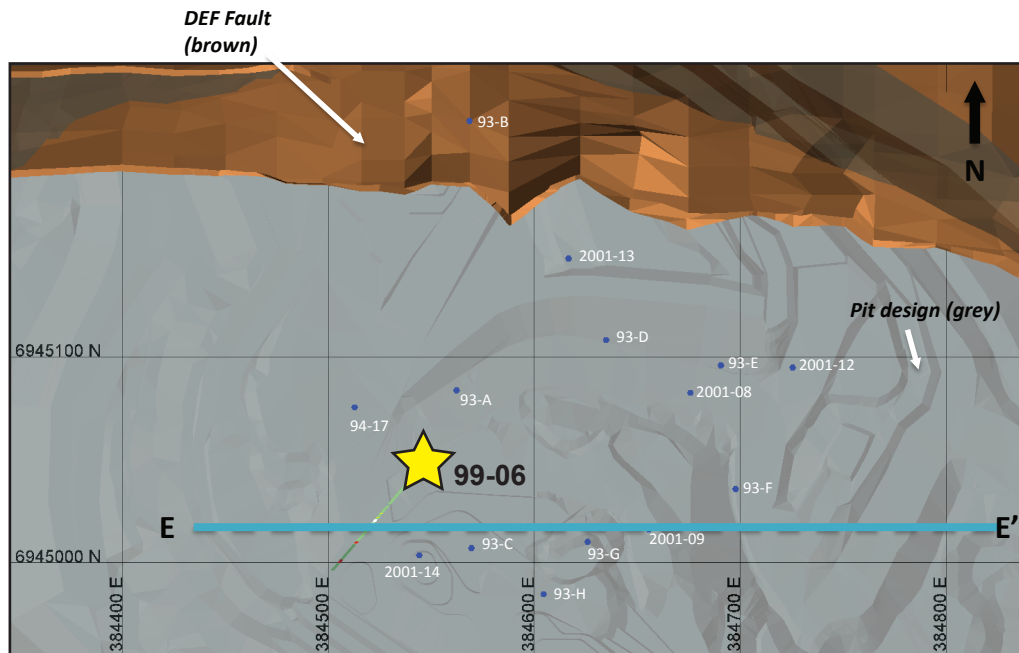
Right: Simplified strip log. Assay data is unavailable for this hole.



Note: a section isn't provided because this is an exploration hole and there is not enough geologic information nearby to create a meaningful section.

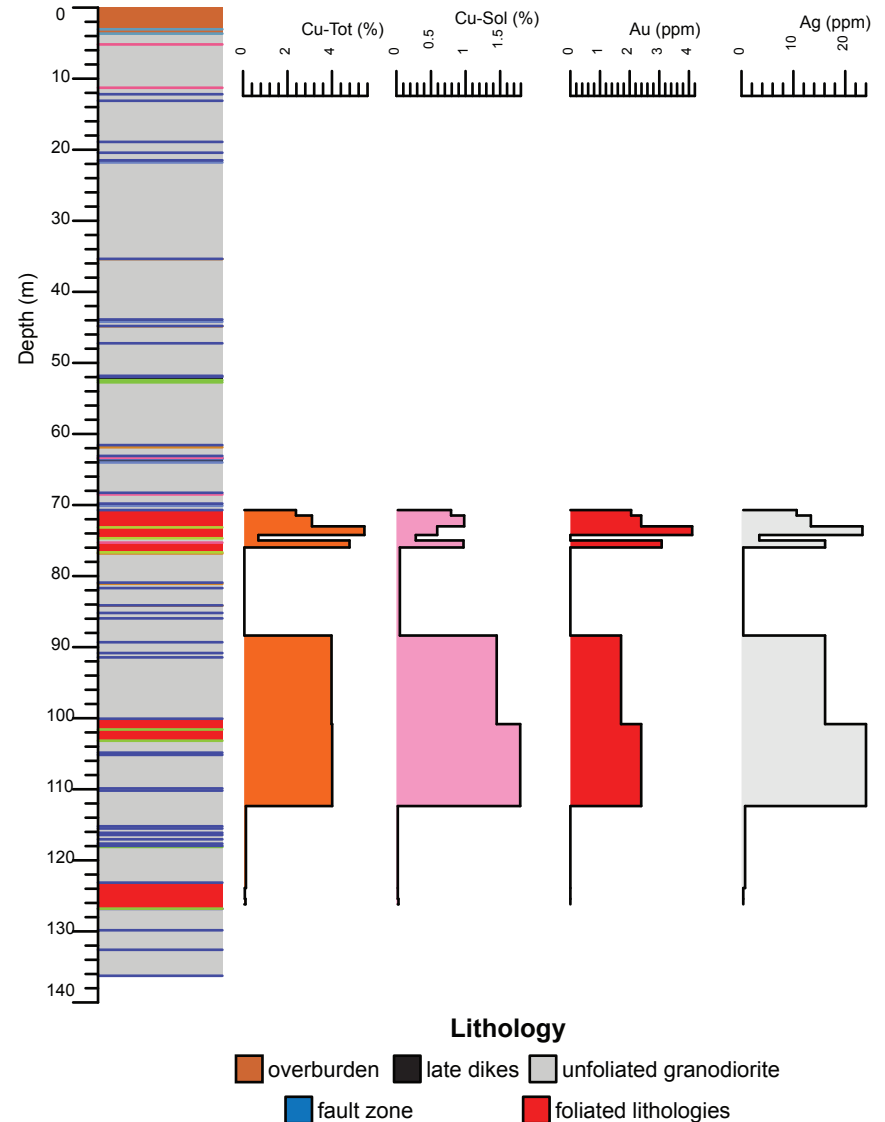
Minto deposit (Yukon MINFILE 115I 021, 022) Drill Hole: 99-06, Minto Main deposit

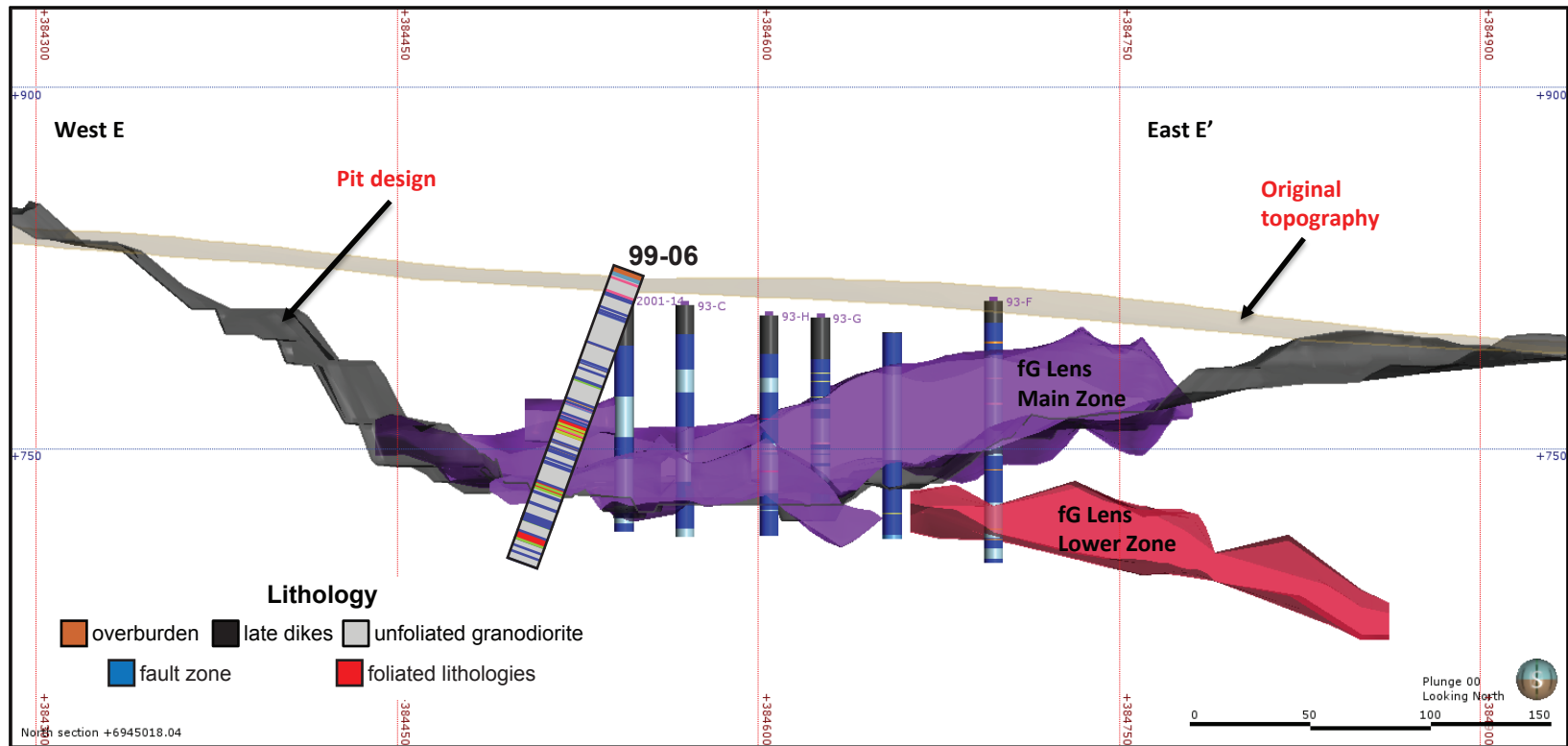
Area	Hole No.	Azimuth	Dip	Length (m)	Collar coordinates (NAD83, Zn 8)
M into Main	99-06	221	-60	136.25	384546mE, 6945048mN



Above: Orthophoto of Minto area. Collar location of 99-06 shown by yellow star, blue circles show collar locations of other drill holes in YGS collection.

Right: Simplified strip log with selected assays.





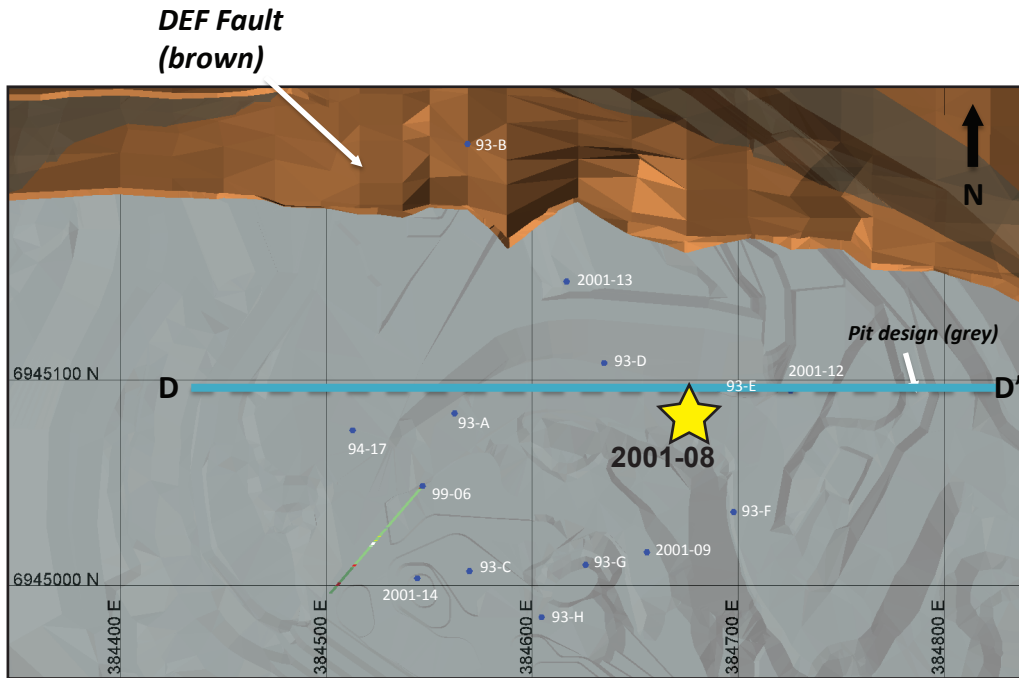
Above: Simplified vertical east-west cross-section through the Minto Main pit.

Right: Selected assays through Minto Main lower zone. Cu - Tot = sulphide and non-sulphide copper, Cu-Sol = non-sulphide copper

Hole	From (m)	To (m)	Interval (m)	Sample	Cu (%)	Cu-Sol (%)	Au (ppm)	Ag (ppm)
99-06	70.71	72.24	1.53	21734	2.4	0.8	2.1	10.6
99-06	72.24	73.76	1.52	21735	3.1	1.0	2.4	13.4
99-06	73.76	74.68	0.92	21736	5.5	0.6	4.1	23.3
99-06	74.68	75.29	0.61	21737	0.7	0.3	0.0	3.4
99-06	75.29	76.66	1.37	21738	4.8	1.0	3.1	16.1
99-06	76.66	78.18	1.52	21739	0.1	0.1	0.0	0.3
99-06	100.07	101.59	1.52	21740	4.0	1.5	1.7	16.1
99-06	101.59	103.17	1.58	21604	4.0	1.8	2.4	24.0
99-06	123.14	124.66	1.52	21605	0.1	0.0	0.0	0.7
99-06	124.66	126.19	1.53	21606	0.1	0.0	0.0	0.3
99-06	126.19	126.8	0.61	21607	0.1	0.0	0.0	0.3

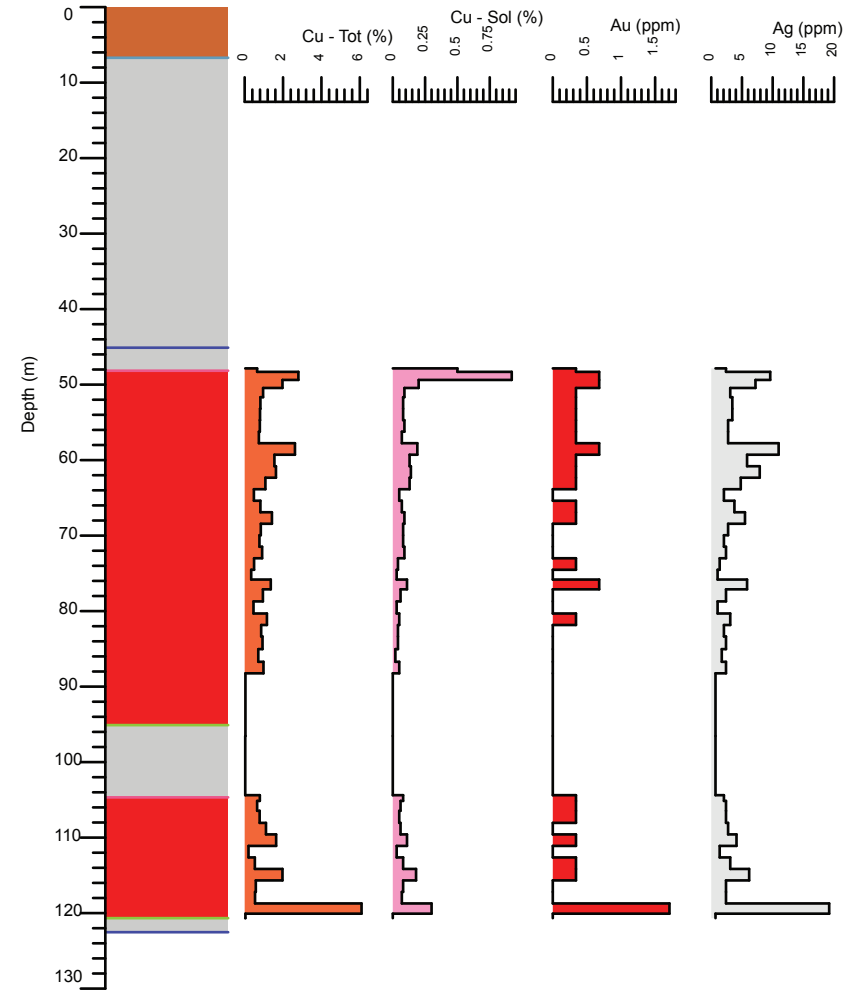
Minto deposit (Yukon MINFILE 115I 021, 022) Drill Hole: 2001-08, Minto Main deposit

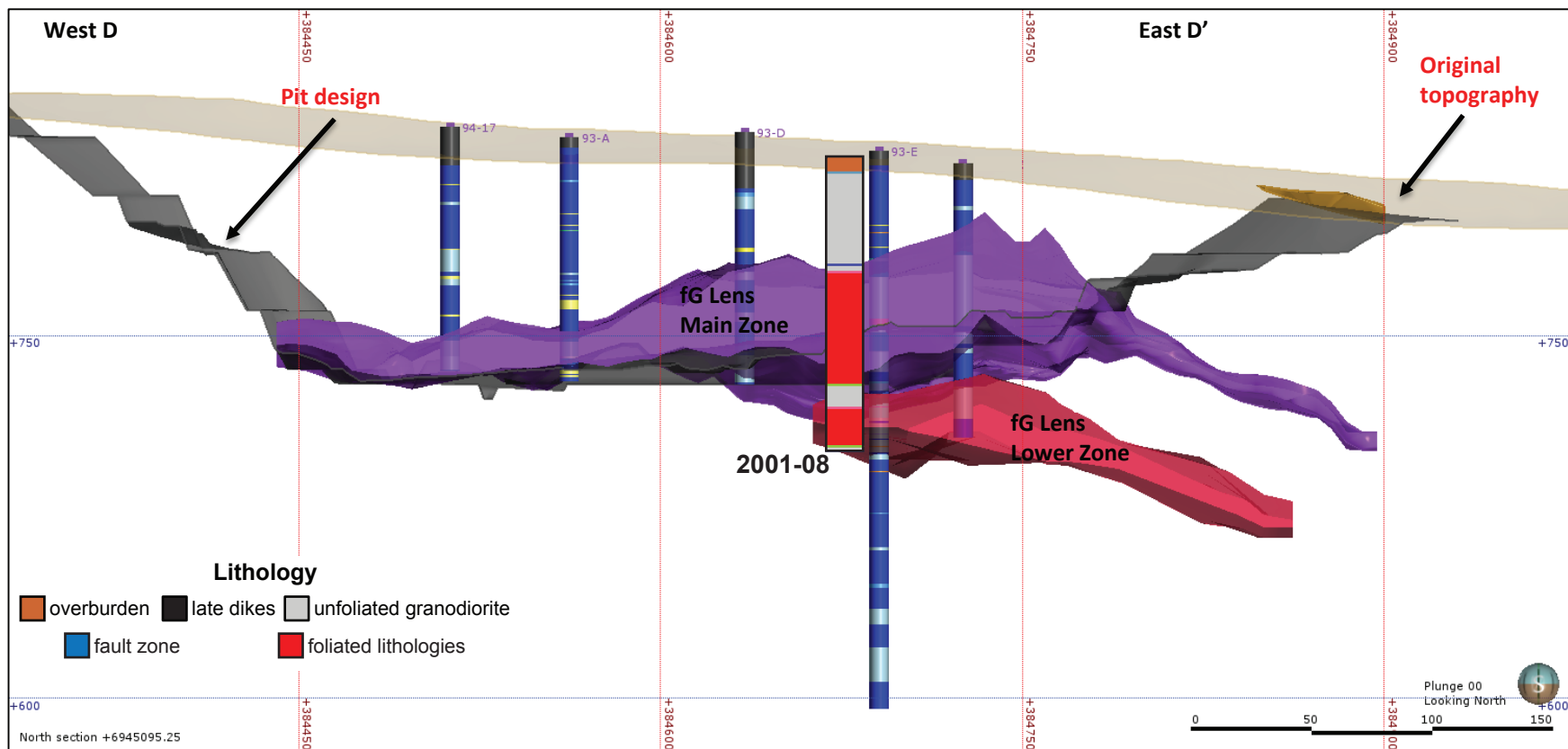
Area	Hole No.	Azimuth	Dip	Length (m)	Collar coordinates (NAD83, Zn 8)
Minto Main	2001-08	0	-90	122.53	384675mE, 6945082mN



Above: Orthophoto of Minto area. Collar location of 2001-08 shown by yellow star, blue circles show collar locations of other drill holes in YGS collection.

Right: Simplified strip log with selected assays.





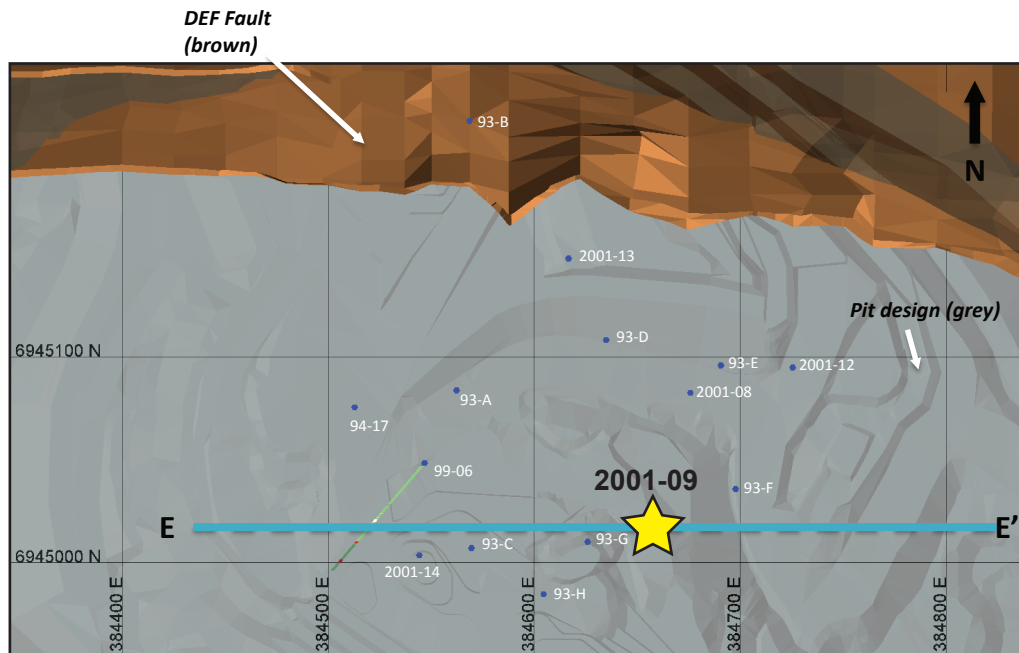
Above: Simplified vertical east-west cross-section through the Minto Main pit.

Right: Selected assays through Minto Main lower zone. Cu - Tot = sulphide and non-sulphide copper, Cu-Sol = non-sulphide copper

Hole	From (m)	To (m)	Interval (m)	Sample	Cu (%)	Cu-Sol (%)	Au (ppm)	Ag (ppm)
2001-08	108.81	110.34	1.53	27261	1.11	0.06	0	2.74
2001-08	110.34	111.86	1.52	27262	1.64	0.11	0.34	4.11
2001-08	111.86	113.39	1.53	27263	0.2	0.03	0	1.37
2001-08	113.39	114.91	1.52	27264	0.53	0.08	0.34	3.09
2001-08	114.91	116.43	1.52	27265	1.97	0.18	0.34	6.17
2001-08	116.43	117.96	1.53	27266	0.58	0.08	0	2.4
2001-08	117.96	119.48	1.52	27267	0.54	0.07	0	2.4
2001-08	119.48	120.67	1.19	27268	6.09	0.3	1.71	19.2
2001-08	120.67	122.53	1.86	27270	0.04	0	0	0.69

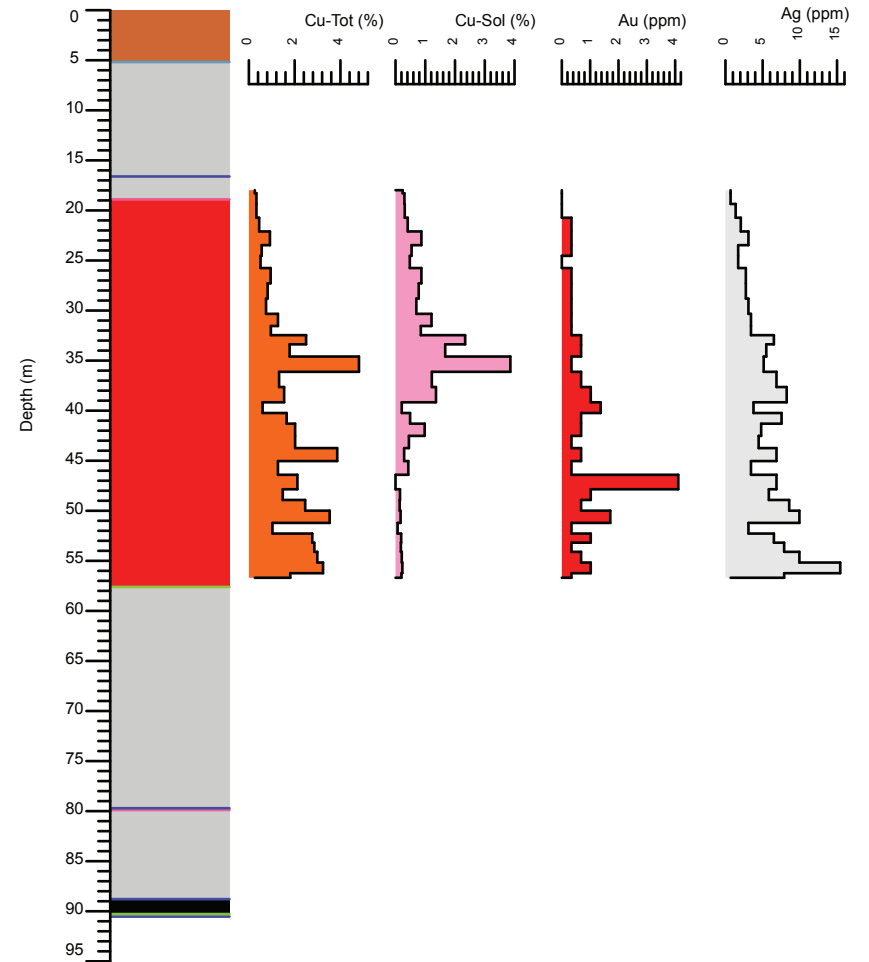
Minto deposit (Yukon MINFILE 115I 021, 022) Drill Hole: 2001-09, Minto Main deposit

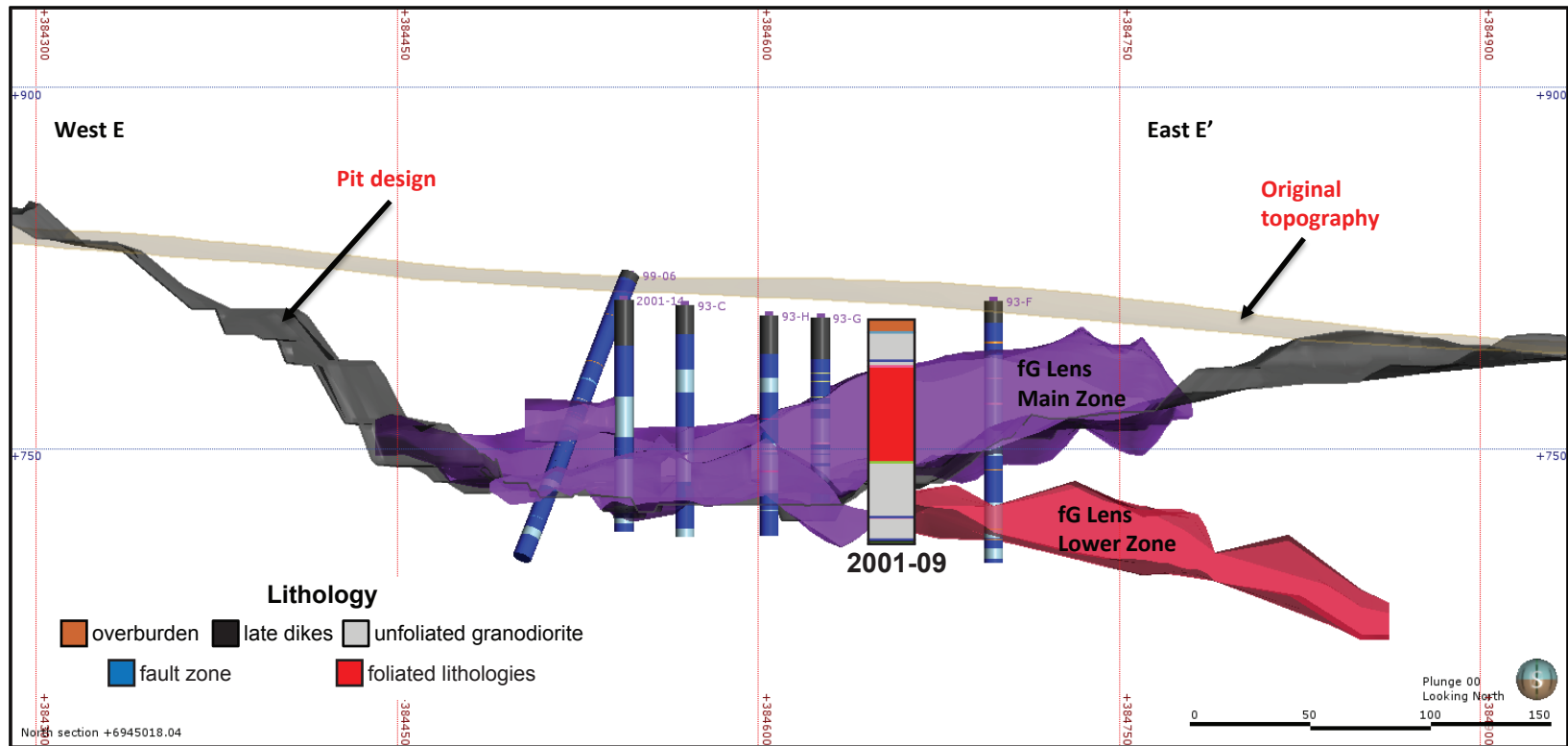
Area	Hole No.	Azimuth	Dip	Length (m)	Collar coordinates (NAD83, Zn 8)
Minto Main	2001-09	0	-90	90.53	384655mE, 6945016mN



Above: Orthophoto of Minto area. Collar location of 2001-09 shown by yellow star, blue circles show collar locations of other drill holes in YGS collection.

Right: Simplified strip log with selected assays.





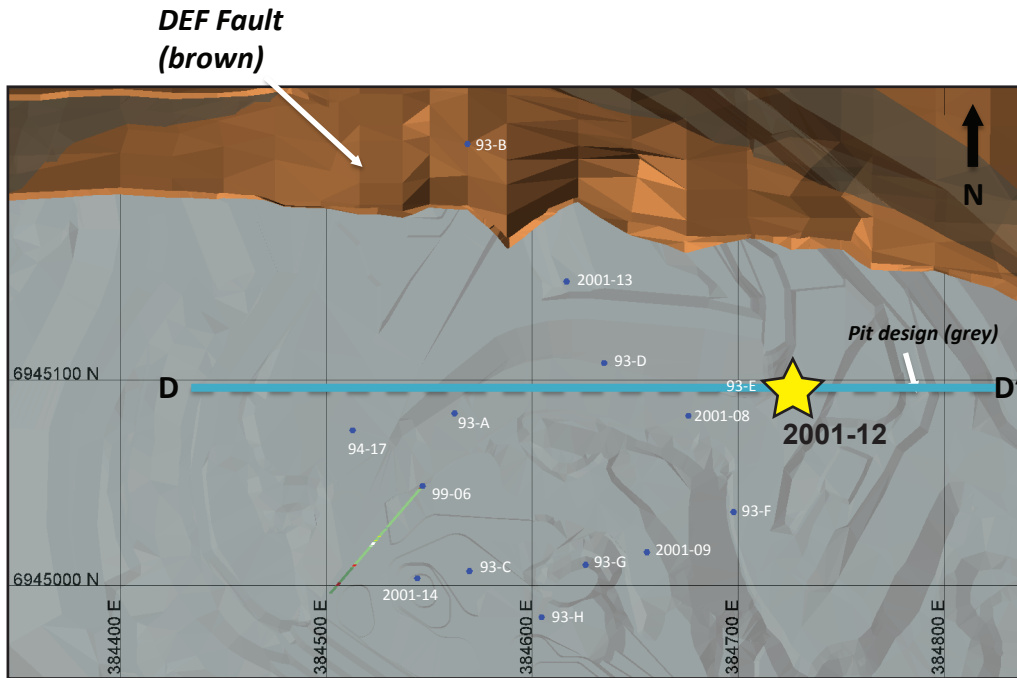
Above: Simplified vertical east-west cross-section through the Minto Main pit.

Right: Selected assays through Minto Main zone. Cu - Tot = sulphide and non-sulphide copper, Cu-Sol = non-sulphide copper

Hole	From (m)	To (m)	Interval (m)	Sample	Cu (%)	Cu-Sol (%)	Au (ppm)	Ag (ppm)
2001-09	26.52	28.04	1.52	27108	1.0	0.9	0.3	2.7
2001-09	28.04	29.57	1.53	27109	0.8	0.8	0.3	2.7
2001-09	29.57	31.09	1.52	27110	0.8	0.7	0.3	3.1
2001-09	31.09	32	0.91	27111	1.3	1.2	0.3	3.4
2001-09	32	32.92	0.92	27112	1.0	0.9	0.3	3.4
2001-09	32.92	33.83	0.91	27113	2.5	2.3	0.7	6.5
2001-09	33.83	35.36	1.53	27116	1.8	1.7	0.7	5.5
2001-09	35.36	36.88	1.52	27117	4.8	3.9	0.3	5.1
2001-09	36.88	38.4	1.52	27118	1.3	1.2	0.7	6.9
2001-09	38.4	39.93	1.53	27119	1.5	1.4	1.0	8.2
2001-09	39.93	40.54	0.61	27332	0.6	0.2	1.4	3.8
2001-09	40.54	42.06	1.52	27333	1.7	0.5	0.7	7.5

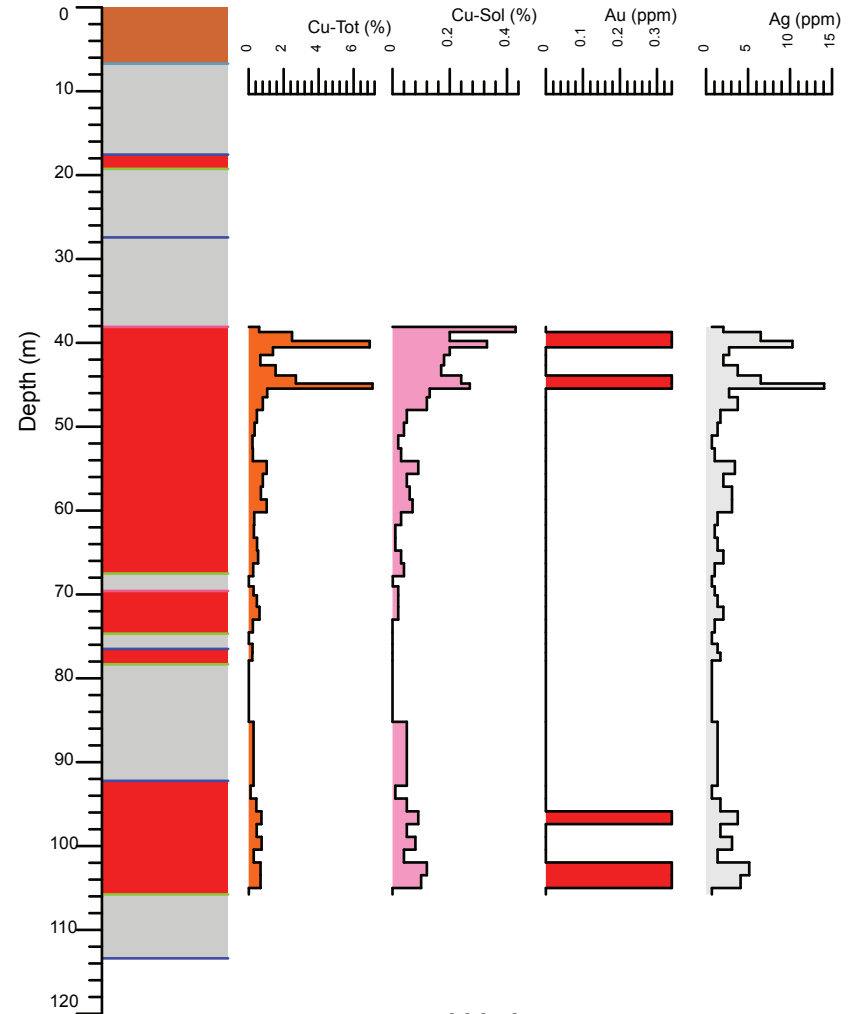
Minto deposit (Yukon MINFILE 115I 021, 022) Drill Hole: 2001-12, Minto Main deposit

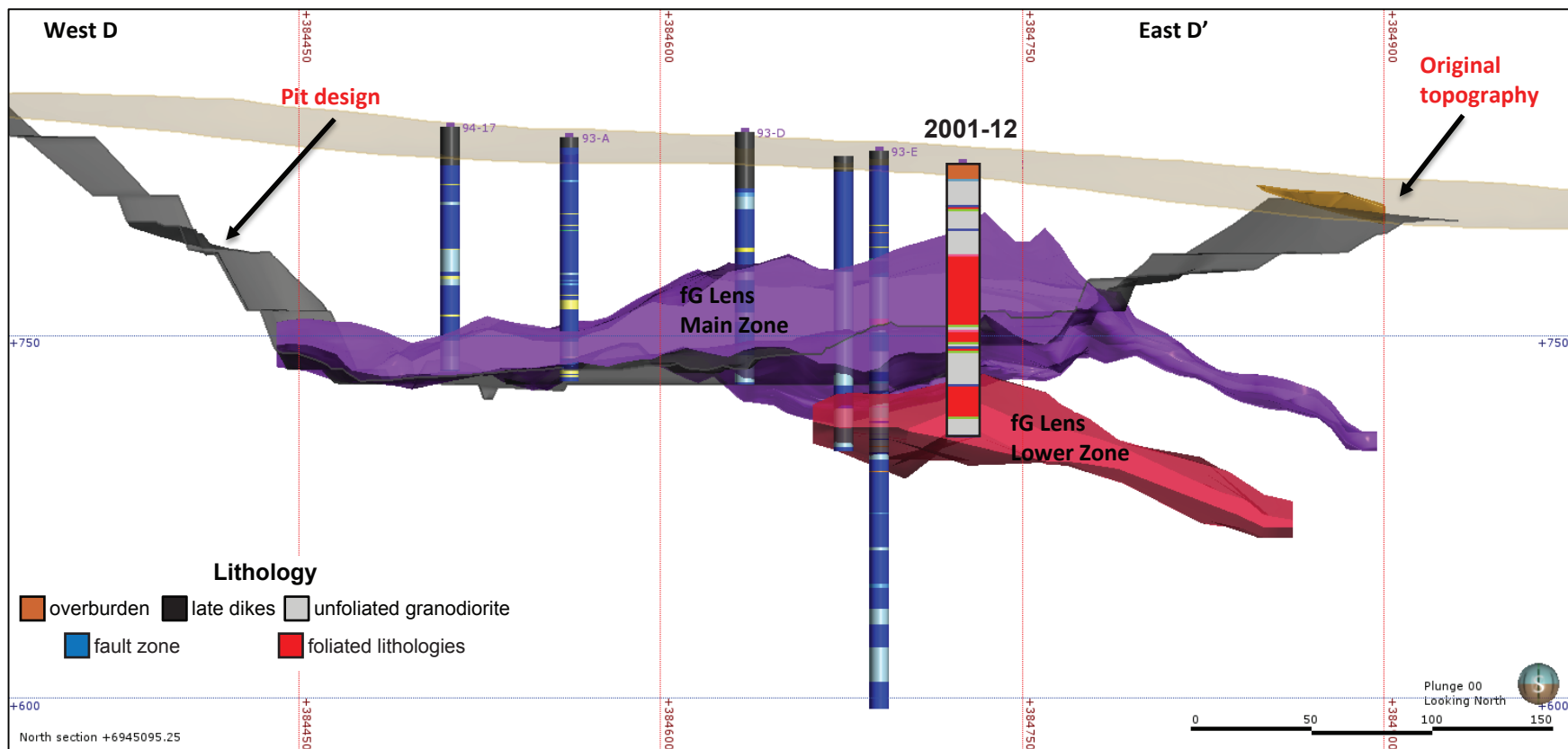
Area	Hole No.	Azimuth	Dip	Length (m)	Collar coordinates (NAD83, Zn 8)
Minto Main	2001-12	0	-90	113.39	384725mE, 6945094mN



Above: Orthophoto of Minto area. Collar location of 2001-12 shown by yellow star, blue circles show collar locations of other drill holes in YGS collection.

Right: Simplified strip log with selected assays.





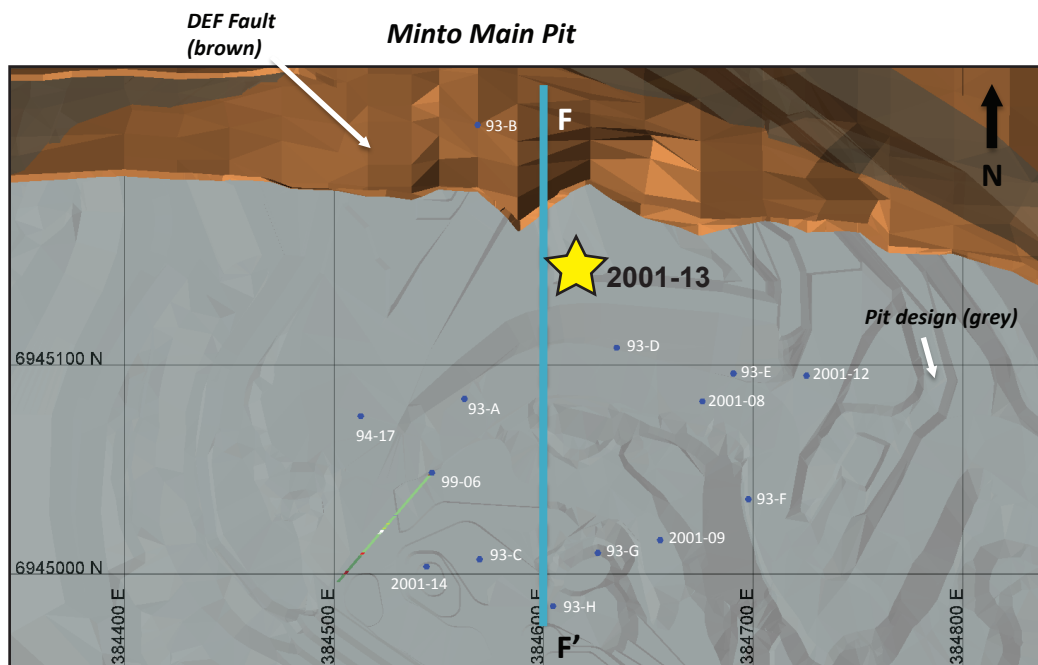
Above: Simplified vertical east-west cross-section through the Minto Main pit.

Right: Selected assays through Minto Main zone. Cu - Tot = sulphide and non-sulphide copper, Cu-Sol = non-sulphide copper

Hole	From (m)	To (m)	Interval (m)	Sample	Cu (%)	Cu-Sol (%)	Au (ppm)	Ag (ppm)
2001-12	38.1	39.32	1.22	27174	0.6	0.4	0.0	2.1
2001-12	39.32	40.23	0.91	27175	2.5	0.2	0.3	6.5
2001-12	40.23	40.84	0.61	27176	6.9	0.3	0.3	10.3
2001-12	40.84	42.06	1.22	27177	1.4	0.2	0.0	2.7
2001-12	42.06	43.28	1.22	27178	0.7	0.2	0.0	2.1
2001-12	43.28	44.5	1.22	27179	1.5	0.2	0.0	3.8
2001-12	44.5	45.2	0.7	27180	2.7	0.2	0.3	6.5
2001-12	45.2	45.72	0.52	27181	7.1	0.3	0.3	14.1
2001-12	45.72	47.24	1.52	27185	1.1	0.1	0.0	2.7
2001-12	47.24	48.77	1.53	27186	0.8	0.1	0.0	3.8
2001-12	48.77	50.29	1.52	27187	0.5	0.1	0.0	1.7

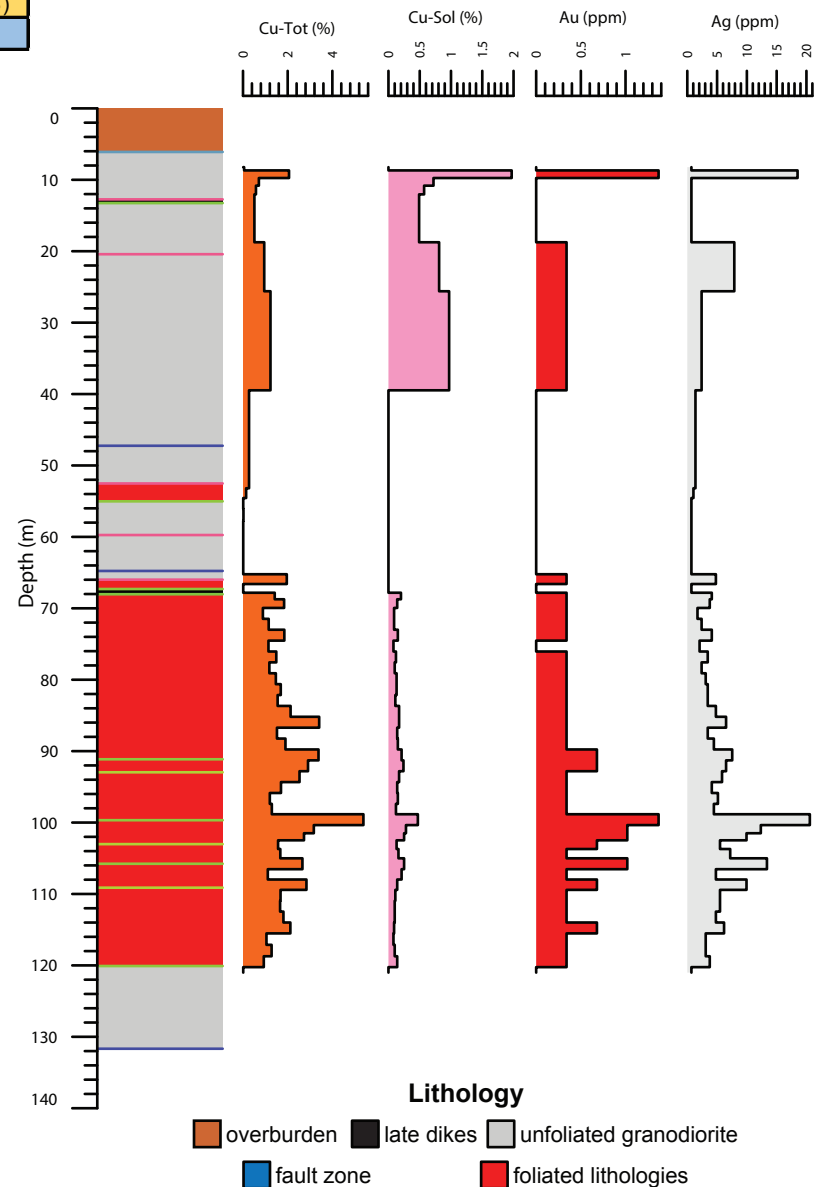
Minto deposit (Yukon MINFILE 115I 021, 022) Drill Hole: 2001-13, Minto Main deposit

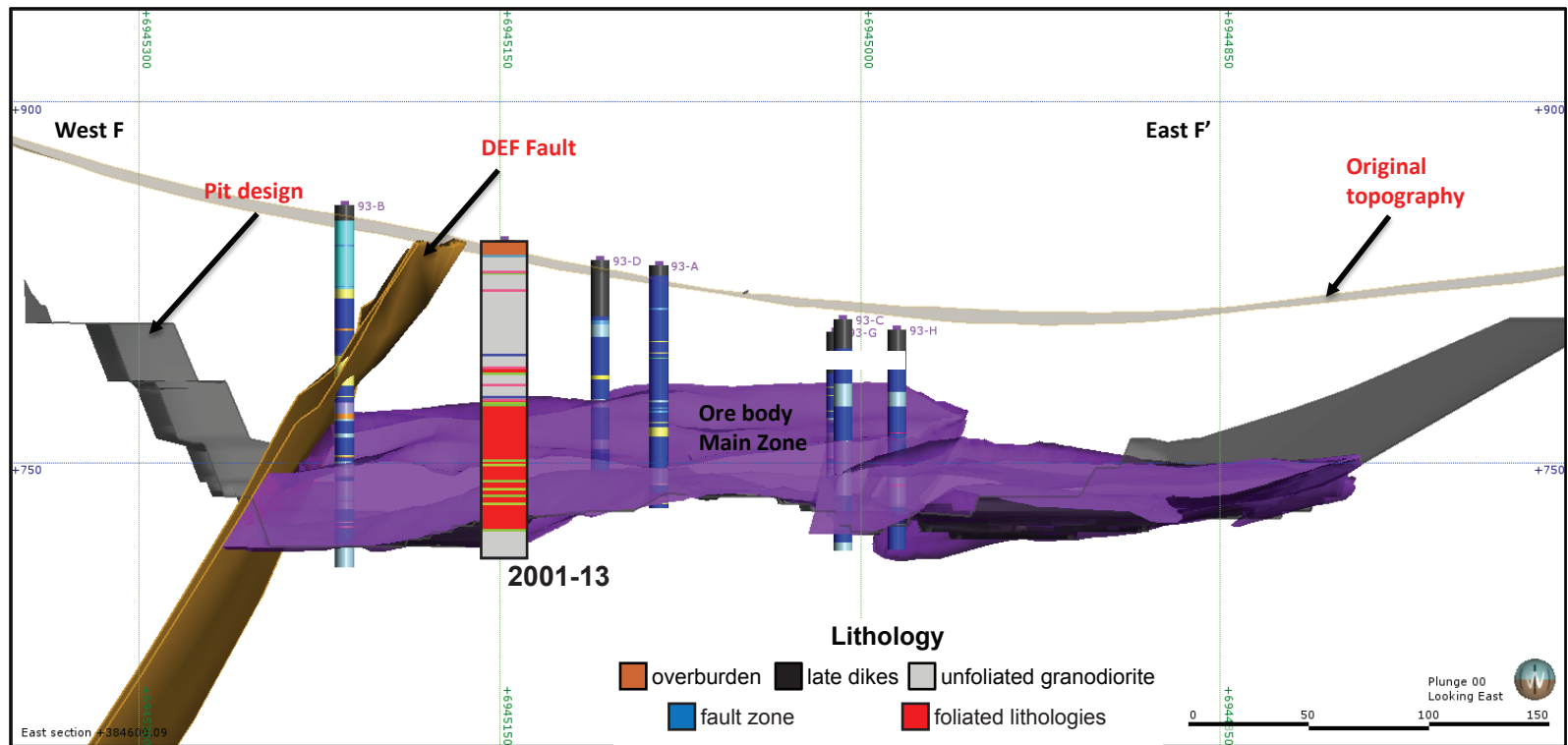
Area	Hole No.	Azimuth	Dip	Length (m)	Collar coordinates (NAD83, Zn 8)
Minto Main	2001-13	0	-90	13.167	384616mE, 6945147mN



Above: Orthophoto of Minto area. Collar location of 2001-13 shown by yellow star, blue circles show collar locations of other drill holes in YGS collection.

Right: Simplified strip log with selected assays.





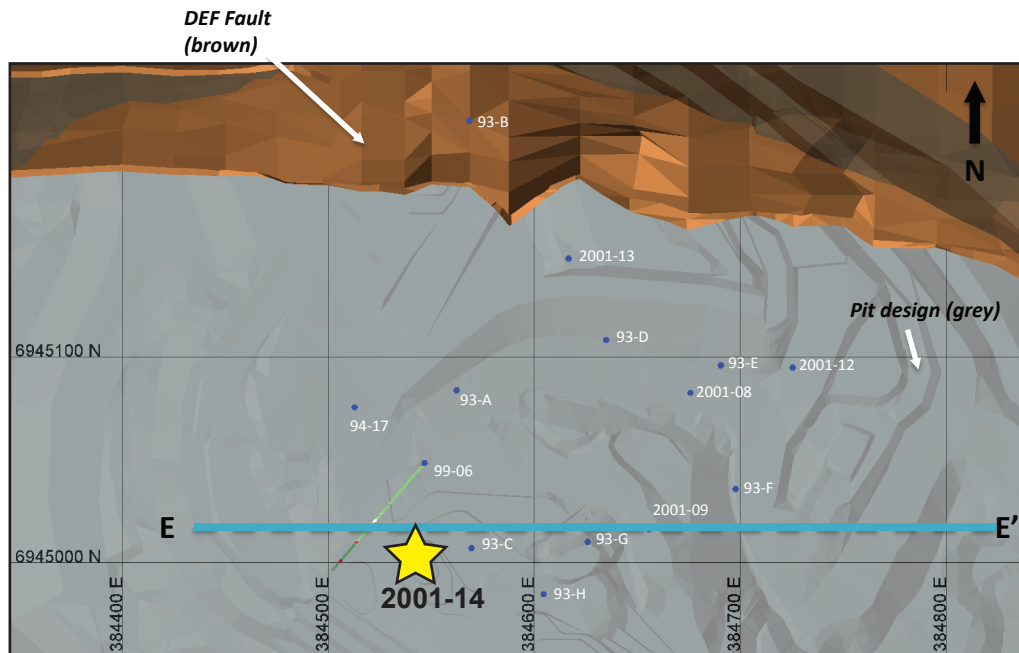
Above: Simplified vertical north-south cross-section through the Minto Main pit.

Right: Selected assays through Minto Main zone. Cu - Tot = sulphide and non-sulphide copper, Cu-Sol = non-sulphide copper

Hole	From (m)	To (m)	Interval (m)	Sample	Cu (%)	Cu-Sol (%)	Au (ppm)	Ag (ppm)
2001-13	64.62	65.84	1.22	27285	0.0	0.0	0.0	0.7
2001-13	65.84	67.36	1.52	27286	2.0	0.0	0.3	4.8
2001-13	67.36	68.28	0.92	27287	0.0	0.0	0.0	0.7
2001-13	68.28	69.19	0.91	27288	1.4	0.2	0.3	4.1
2001-13	69.19	70.71	1.52	27289	1.8	0.1	0.3	3.8
2001-13	70.71	72.24	1.53	27290	0.9	0.1	0.3	1.7
2001-13	72.24	73.76	1.52	27291	1.2	0.1	0.3	2.4
2001-13	73.76	75.29	1.53	27292	1.9	0.2	0.3	4.1
2001-13	75.29	76.81	1.52	27294	1.1	0.1	0.0	2.1
2001-13	76.81	78.33	1.52	27295	1.5	0.1	0.3	3.4
2001-13	78.33	79.86	1.53	27296	1.2	0.1	0.3	2.4
2001-13	79.86	81.38	1.52	27297	1.5	0.1	0.3	3.1
2001-13	81.38	82.91	1.53	27298	1.7	0.1	0.3	3.4

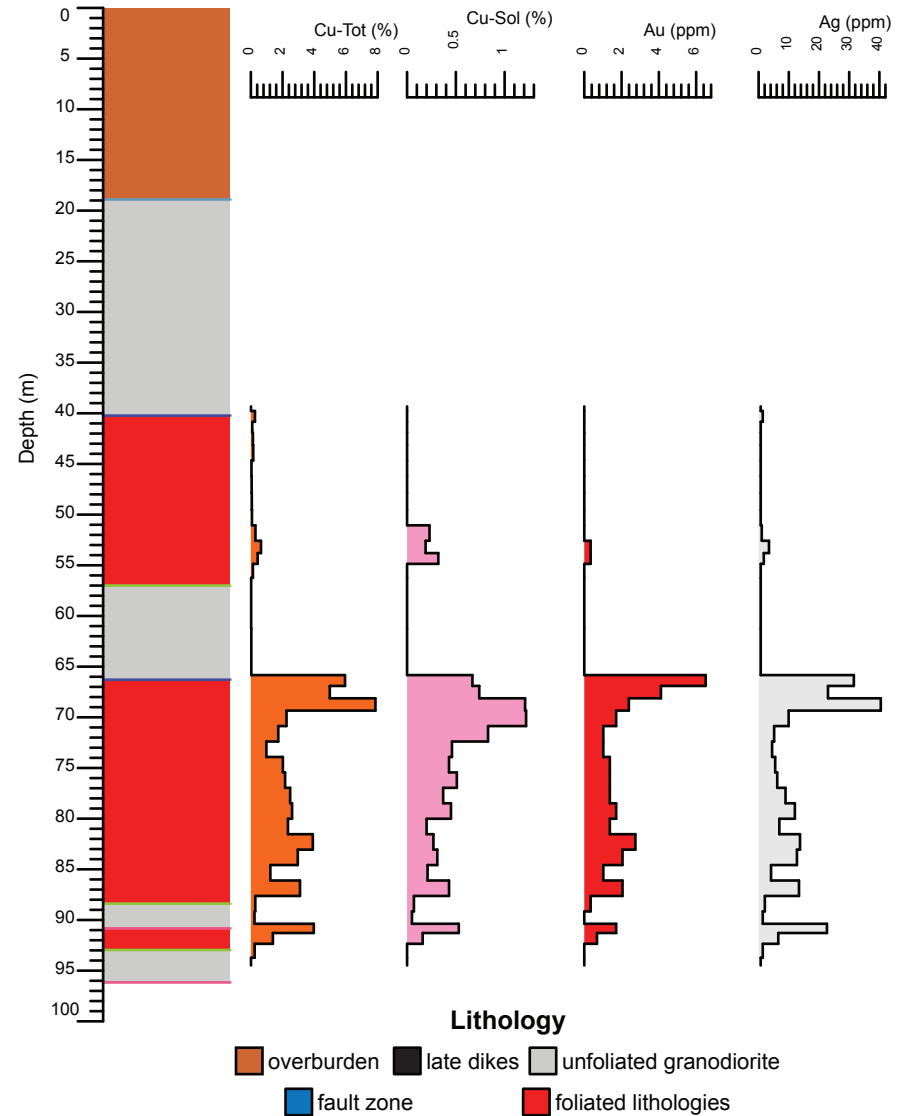
Minto deposit (Yukon MINFILE 115I 021, 022) Drill Hole: 2001-14, Minto Main deposit

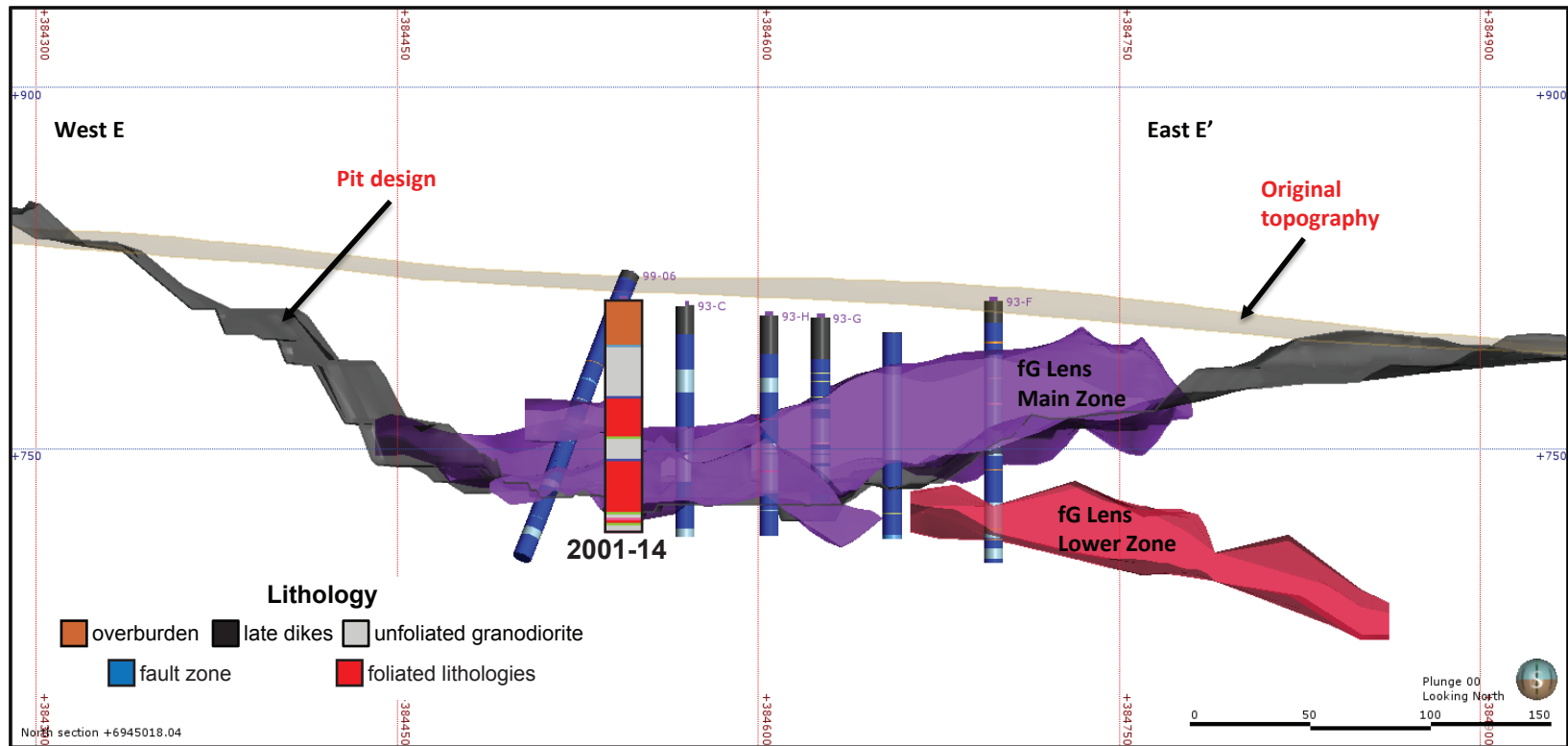
Area	Hole No.	Azimuth	Dip	Length (m)	Collar coordinates (NAD83, Zn 8)
M into Main	2001-14	0	-90	96.16	384544mE, 6945003mN



Above: Orthophoto of Minto area. Collar location of 2001-14 shown by yellow star, blue circles show collar locations of other drill holes in YGS collection.

Right: Simplified strip log with selected assays.





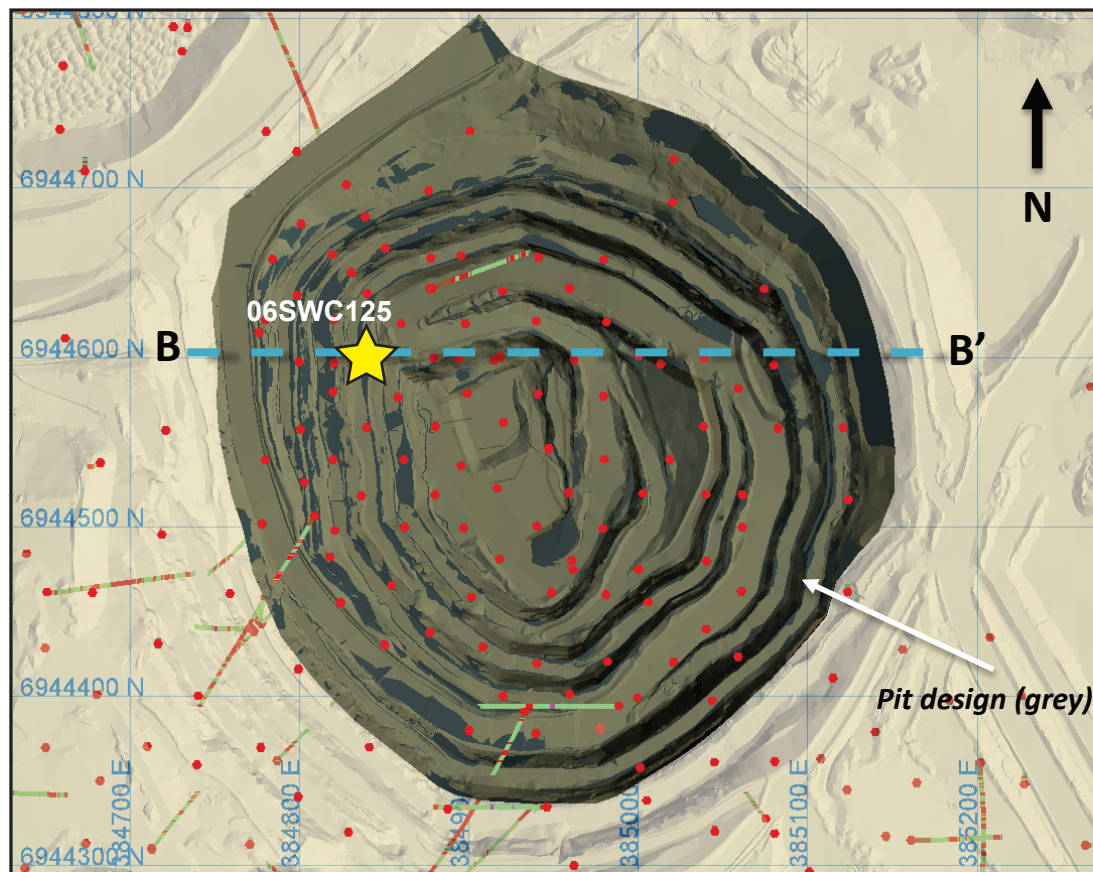
Above: Simplified vertical east-west cross-section through the Minto Main pit.

Right: Selected assays through Minto Main zone. Cu - Tot = sulphide and non-sulphide copper, Cu-Sol = non-sulphide copper

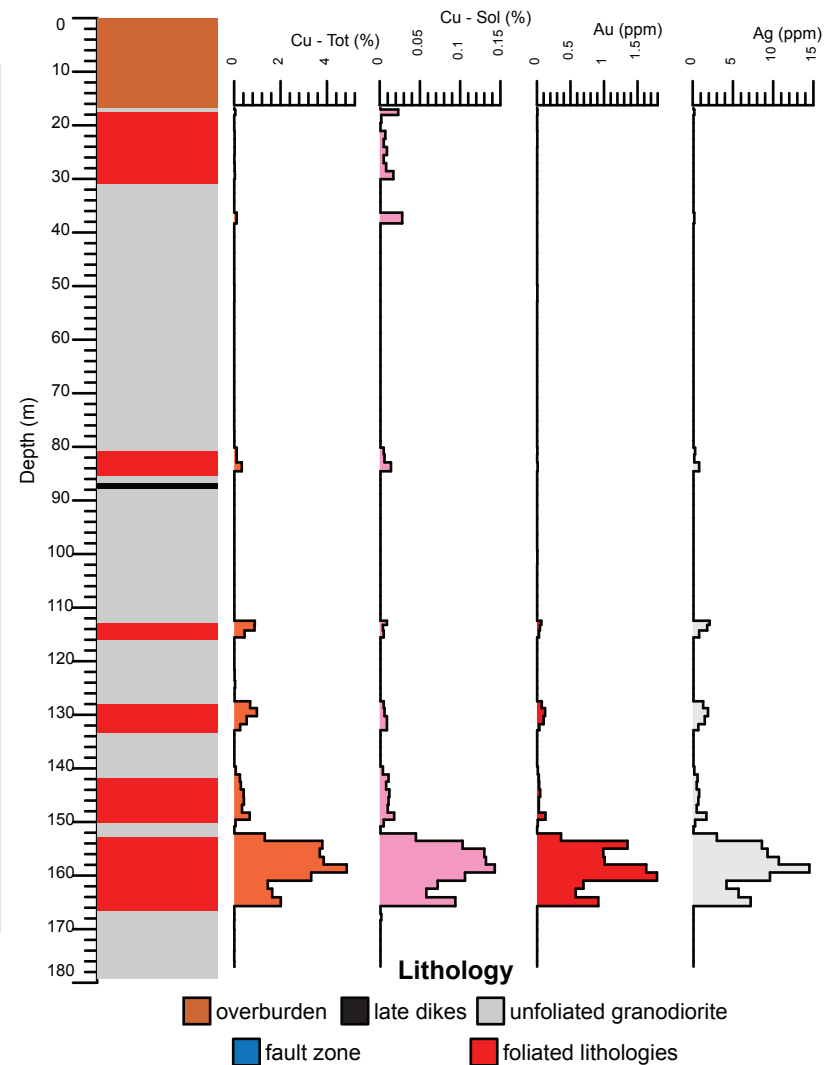
Hole	From (m)	To (m)	Interval (m)	Sample	Cu (%)	Cu-Sol (%)	Au (ppm)	Ag (ppm)
2001-14	65.53	66.14	0.61	27147	0.0	0.0	0.0	0.7
2001-14	66.14	67.67	1.53	27148	5.9	0.7	6.5	31.5
2001-14	67.67	68.58	0.91	27149	5.0	0.7	4.1	23.0
2001-14	68.58	70.1	1.52	27150	7.9	1.2	2.4	40.5
2001-14	70.1	71.63	1.53	27153	2.3	1.2	1.7	9.9
2001-14	71.63	73.15	1.52	27154	1.7	0.8	1.0	5.1
2001-14	73.15	74.68	1.53	27155	1.0	0.5	1.0	4.5
2001-14	74.68	76.2	1.52	27156	2.0	0.4	1.4	5.5
2001-14	76.2	77.72	1.52	27157	2.2	0.5	1.4	6.2
2001-14	77.72	79.25	1.53	27158	2.5	0.4	1.4	8.9
2001-14	79.25	80.77	1.52	27159	2.6	0.5	1.7	12.0

Minto deposit (Yukon MINFILE 115I 021, 022) Drill Hole: 06SWC125, Minto South deposit (Area 2 pit)

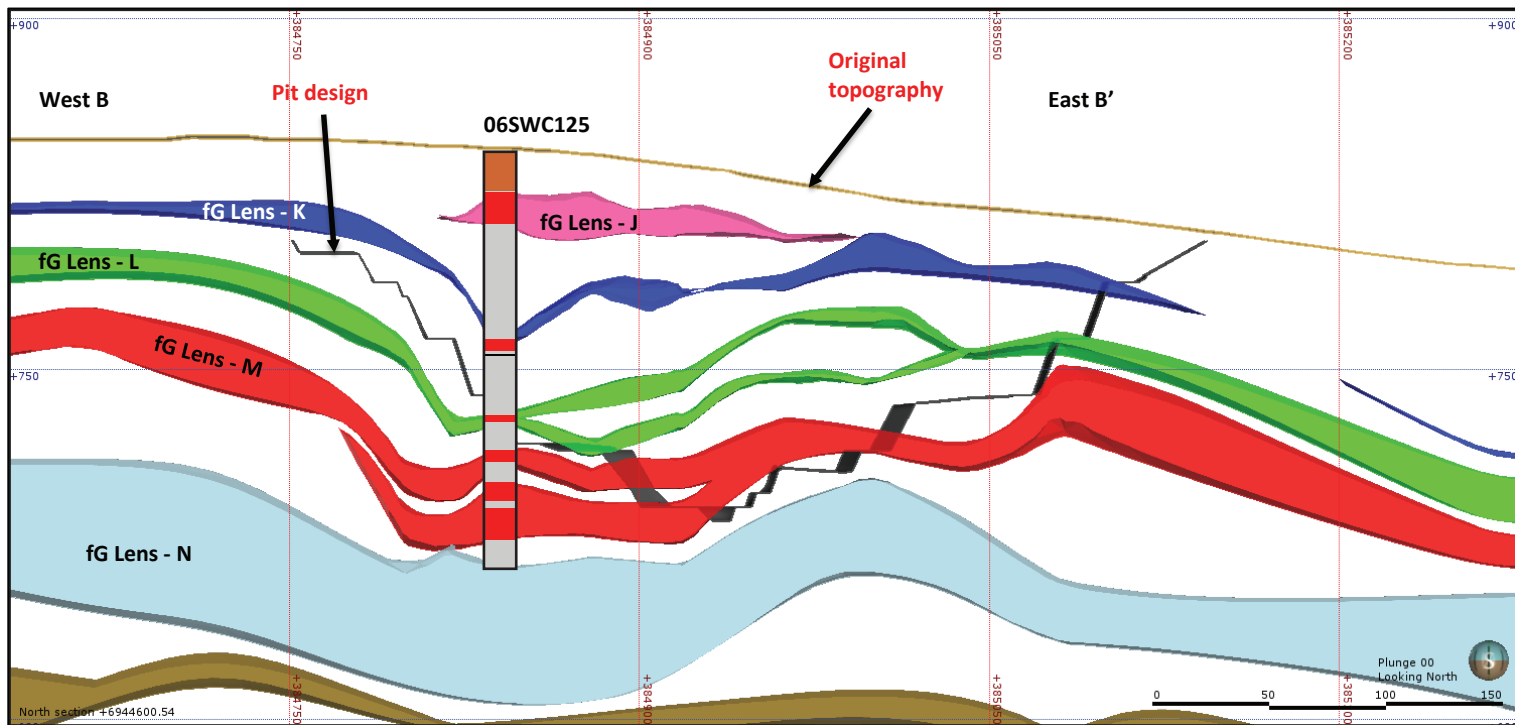
Area	Hole No.	Azimuth	Dip	Length (m)	Collar coordinates (NAD83, Zn 8)
Area 2 (South Minto)	06SWC125	0	-90	179.22	384840mE, 6944601mN



Above: Orthophoto of Area 2 pit (Minto South deposit). Collar location of 06SWC125 shown by yellow star, red circles show collar locations of other drill holes.



Right: Right: Simplified strip log with select assay plotted downhole.



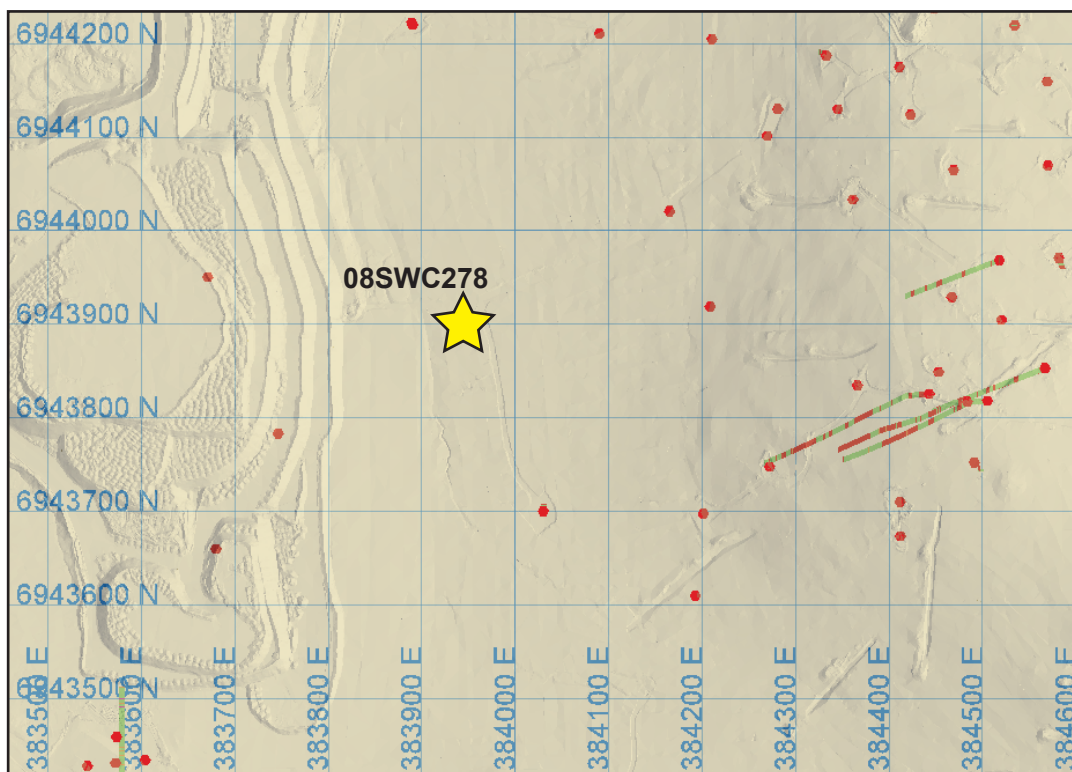
Above: Simplified vertical east-west cross-section through the Area 2 pit (Minto South deposit).

Right: Selected assays through the M lens of Area 2 pit (Minto South deposit). Cu = sulphide and non-sulphide copper, Cu-Sol = non-sulphide copper

Hole	From (m)	To (m)	Interval (m)	Sample	Cu (%)	Cu-Sol (%)	Au (ppm)	Ag (ppm)
06SWC125	147.5	149	1.5	B797615	0.34	0.01	0.028	0.5
06SWC125	149	150.16	1.16	B797616	0.67	0.018	0.127	1.7
06SWC125	150.16	151.46	1.3	B797617	0.06	0.005	0.012	0.3
06SWC125	151.46	152.81	1.35	B797618	0.01	0.001	0.003	0.1
06SWC125	152.81	154.23	1.42	B797619	1.32	0.045	0.359	3
06SWC125	154.23	155.73	1.5	B797620	3.8	0.103	1.35	8.6
06SWC125	155.73	157.33	1.6	B797622	3.69	0.13	0.99	9.3
06SWC125	157.33	158.53	1.2	B797623	3.86	0.132	1.01	10.7
06SWC125	158.53	160.32	1.79	B797624	4.85	0.143	1.63	14.5
06SWC125	160.32	161.6	1.28	B797625	3.32	0.106	1.79	9.6
06SWC125	161.6	163.3	1.7	B797626	1.45	0.072	0.694	4.2
06SWC125	163.3	164.8	1.5	B797627	1.64	0.058	0.578	5.7
06SWC125	164.8	166.59	1.79	B797628	2.01	0.094	0.915	7.2
06SWC125	166.59	167.66	1.07	B797630	0.01	0.001	0.003	0.1
06SWC125	167.66	169	1.34	B797631	0.01	0.002	0.003	0.1
06SWC125	169	171.2	2.2	B797632	0.005	0.001	0.003	0.1
06SWC125	171.2	173	1.8	B797633	0.01	0.001	0.003	0.1
06SWC125	173	175	2	B797635	0.01	0.001	0.003	0.1
06SWC125	175	177	2	B797636	0.005	0.001	0.003	0.1
06SWC125	177	179.22	2.22	B797637	0.01	0.001	0.003	0.1

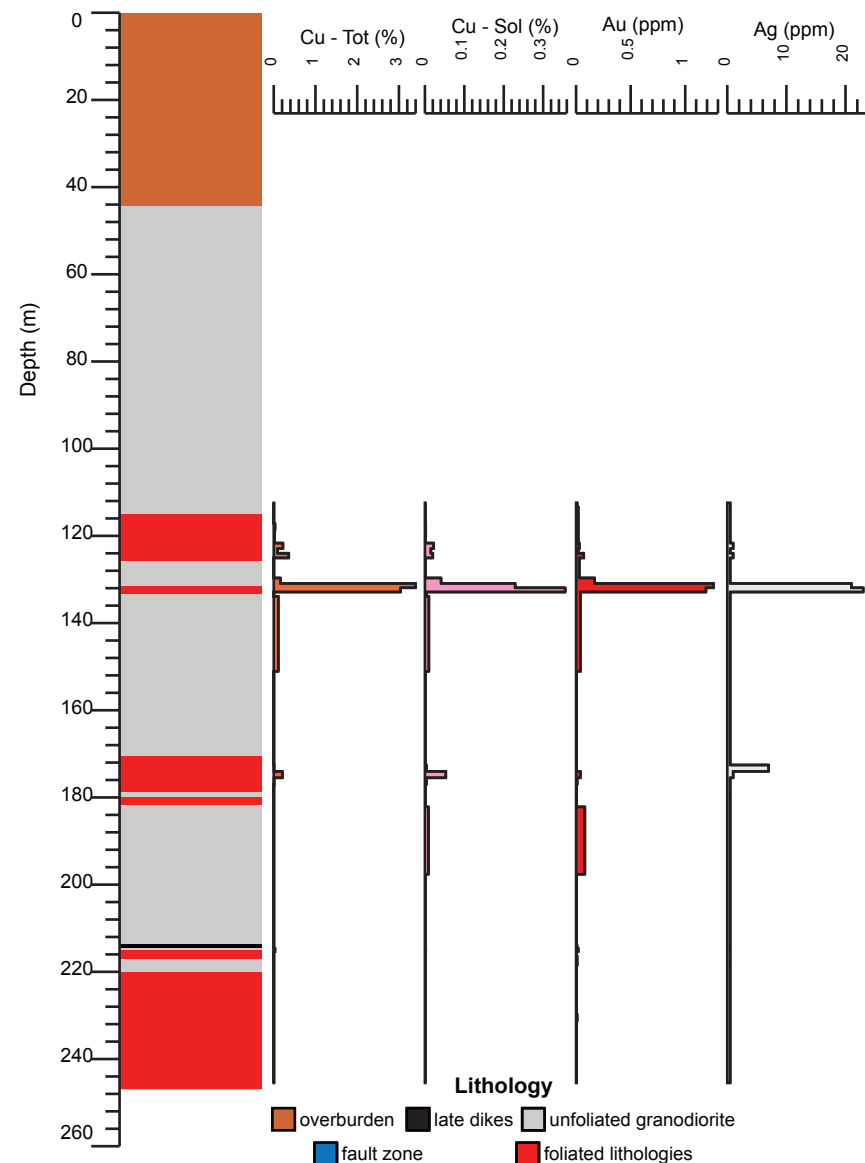
Minto deposit (Yukon MINFILE 115I 021, 022) Drill Hole: 08SWC278, Exploration west of Ridgetop deposit

Area	Hole No.	Azimuth	Dip	Length (m)	Collar coordinates (NAD83, Zn 8)
Exploration west of Ridgetop	08SWC278	0	-90	246.80	383940mE, 6943900mN



Above: Orthophoto west of Ridgetop deposit. Collar location of 08SWC278 shown by yellow star, red circles show collar locations of other drill holes.

Right: Simplified strip log with select assay plotted downhole.

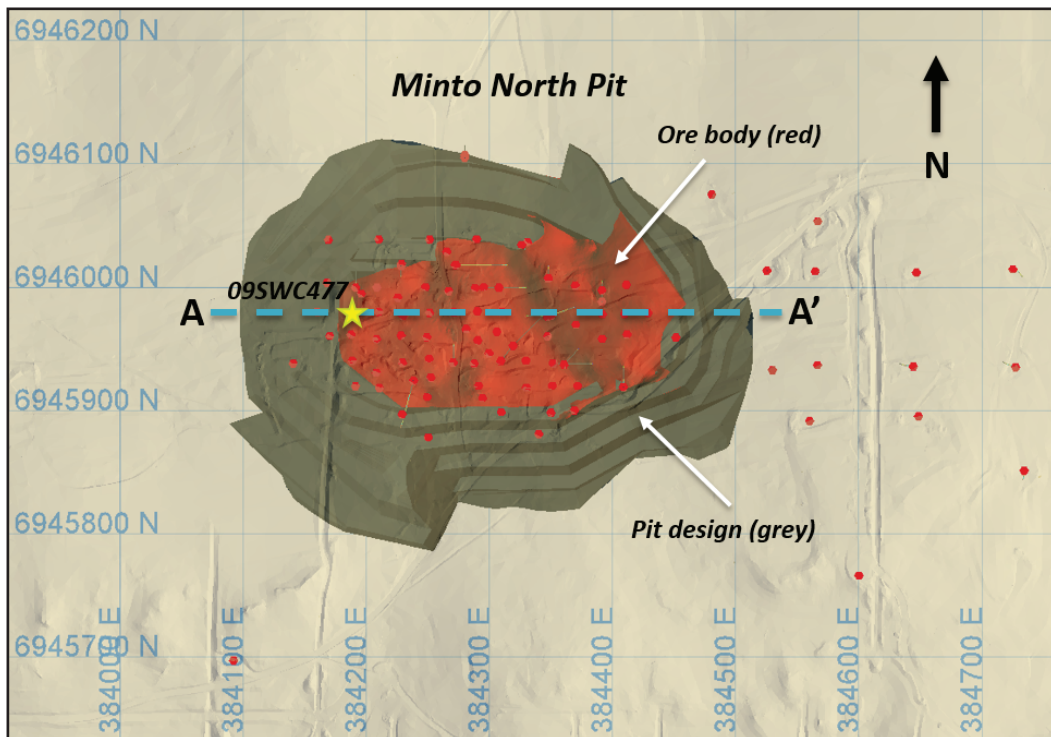


Hole	From (m)	To (m)	Interval (m)	Sample	Cu (%)	Cu-Sol (%)	Au (ppm)	Ag (ppm)
08SWC278	112.4	113.9	1.5	D021796	0.005	0.001	0.01	0.5
08SWC278	113.9	114.91	1.01	D021797	0.005	0.001	0.02	0.5
08SWC278	114.91	116.4	1.49	D021798	0.005	0.001	0.02	0.5
08SWC278	116.4	117.9	1.5	D021799	0.005	0.001	0.02	0.5
08SWC278	117.9	119.4	1.5	D021800	0.03	0.002	0.02	0.5
08SWC278	119.4	120.9	1.5	D021801	0.02	0.002	0.02	0.5
08SWC278	120.9	122.4	1.5	D021803	0.02	0.001	0.02	0.5
08SWC278	122.4	123.46	1.06	D021804	0.22	0.022	0.03	1
08SWC278	123.46	124.5	1.04	D021805	0.09	0.015	0.02	0.5
08SWC278	124.5	125.62	1.12	D021806	0.36	0.02	0.07	1
08SWC278	125.62	126.6	0.98	D021807	0.005	0.001	0.03	0.5
08SWC278	126.6	128.1	1.5	D021808	0.005	0.001	0.03	0.5
08SWC278	128.1	128.9	0.8	D021809	0.005	0.001	0.03	0.5
08SWC278	128.9	130.4	1.5	D021810	0.005	0.001	0.03	0.5
08SWC278	130.4	131.41	1.01	D021811	0.16	0.041	0.17	0.5
08SWC278	131.41	132.4	0.99	D021812	3.4	0.229	1.26	21
08SWC278	132.4	133.36	0.96	D021813	3.04	0.356	1.19	23
08SWC278	133.36	134.35	0.99	D021815	0.005	0.004	0.04	0.5
08SWC278	134.35	135.85	1.5	D021816	0.11	0.01	0.04	0.5
08SWC278	167.8	169.3	1.5	D021818	0.005	0.001	0.005	0.5
08SWC278	169.3	170.32	1.02	D021819	0.005	0.001	0.005	0.5
08SWC278	170.32	171.8	1.48	D021820	0.005	0.001	0.005	0.5
08SWC278	171.8	173.3	1.5	D021822	0.005	0.001	0.005	0.5

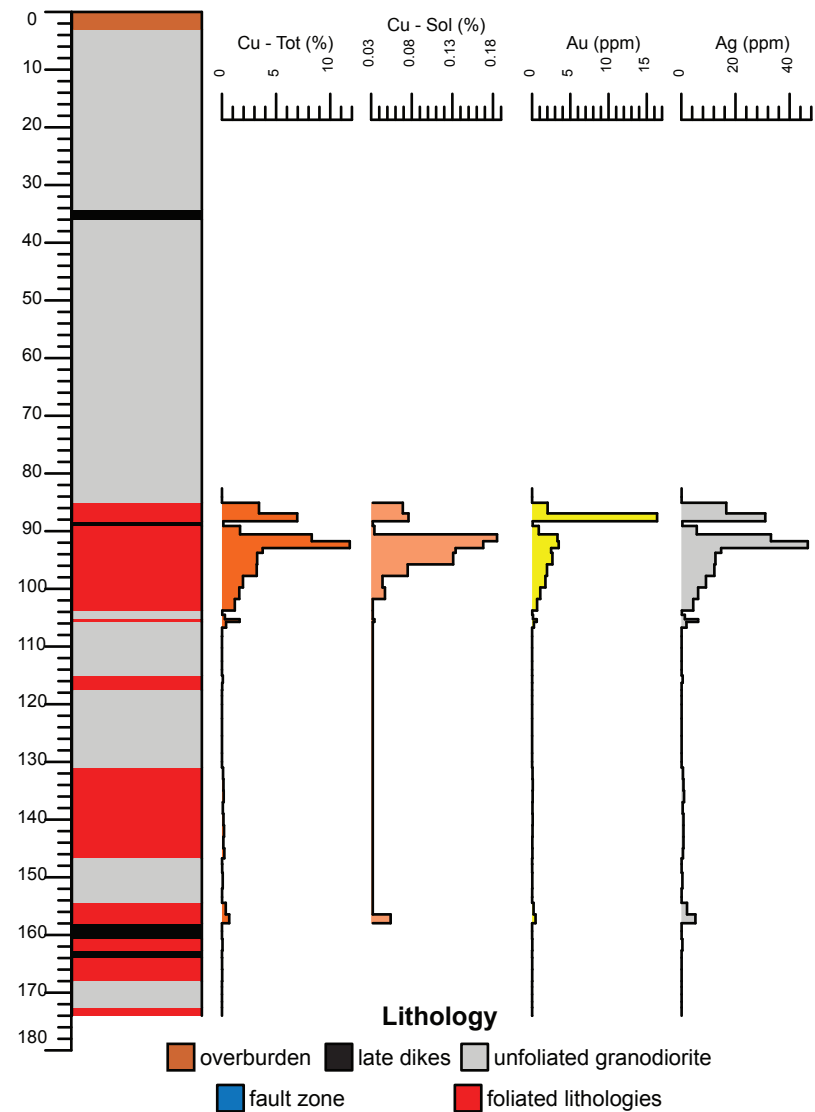
Above: Selected assays from middle portion of 08SWC278. Cu - Tot = sulphide and non-sulphide copper, Cu-Sol = non-sulphide copper. Note a cross section including 08SWC278 is not shown as it was an exploration hole distal to the deposits.

Minto deposit (Yukon MINFILE 115I 021, 022) Drill Hole: 09SWC477, Minto North deposit

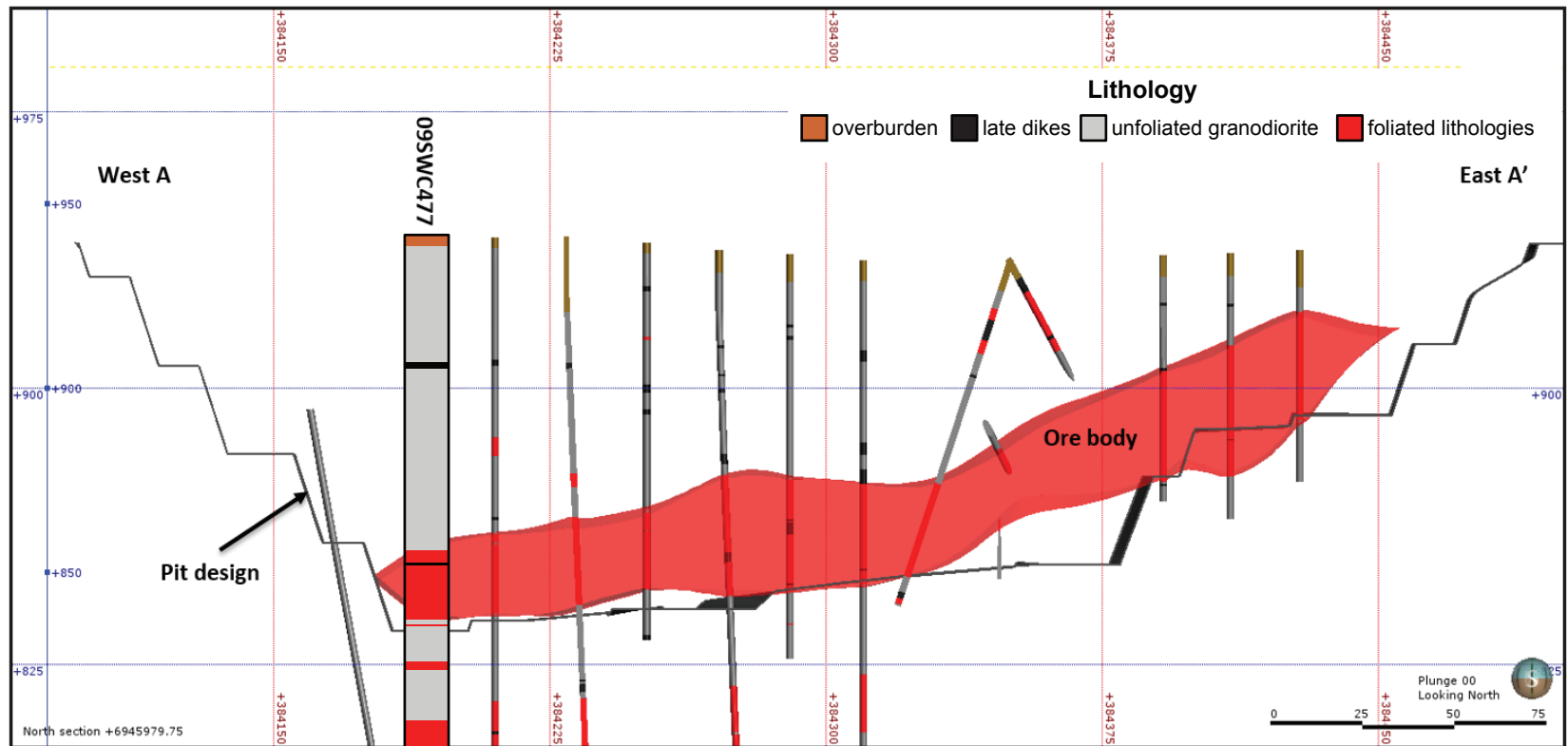
Area	Hole No.	Azimuth	Dip	Length (m)	Collar coordinates (NAD83, Zn 8)
Minto North	09SWC477	0	-90	174.0	384191mE, 6945979mN



Plan view image of Minto North deposit area. Collar location of 09SWC477 shown by yellow star, red circles show collar locations of other drill holes.



Simplified strip log of 09SWC477 with selected assays.



Above: Simplified vertical east-west cross-section through the Minto North pit.

Right: Selected assays through Minto North orebody. Cu - Tot = sulphide and non-sulphide copper, Cu-Sol = non-sulphide copper

Hole	Sample	From (m)	To (m)	Interval (m)	Cu (%)	Cu-Sol (%)	Au (ppm)	Ag (ppm)
09SWC477	G0757715	82.58	84.08	1.5	0.001		0.003	0.1
09SWC477	G0757716	84.08	85.08	1	0.001		0.003	0.1
09SWC477	G0757718	85.08	86.92	1.84	3.42	0.069	2.03	16.6
09SWC477	G0757719	86.92	88.28	1.36	6.95	0.076	16.35	31
09SWC477	G0757720	88.28	89.1	0.82	0.13		0.078	0.4
09SWC477	G0757721	89.1	90.55	1.45	1.67	0.034	0.874	5.7
09SWC477	G0757723	90.55	91.74	1.19	8.29	0.185	3.32	33.1
09SWC477	G0757724	91.74	92.93	1.19	11.8	0.168	3.48	46.7
09SWC477	G0757725	92.93	93.76	0.83	3.76	0.134	2.49	14.7
09SWC477	G0757726	93.76	95.76	2	3.25	0.131	2.66	12.6
09SWC477	G0757728	95.76	97.76	2	3.21	0.075	1.95	12.2
09SWC477	G0757729	97.76	99.76	2	1.94	0.044	1.745	9.1
09SWC477	G0757730	99.76	101.76	2	1.6	0.047	1.07	6.2
09SWC477	G0757731	101.76	103.76	2	1.185	0.032	0.654	4.4
09SWC477	G0757733	103.76	104.51	0.75	0.03		0.02	0.2
09SWC477	G0757734	104.51	105.26	0.75	0.27		0.118	1.3
09SWC477	G0757735	105.26	105.73	0.47	1.625	0.034	0.606	6.2