

# Yukon Hard Rock Mining, Development and Exploration Overview 2017

*Lara Lewis and Scott Casselman*  
*Minerals Geology Unit, Yukon Geological Survey*

Lewis, L.L. and Casselman, S., 2018. Yukon Hard Rock Mining, Development and Exploration Overview 2017. *In: Yukon Exploration and Geology Overview 2017*, K.E. MacFarlane (ed.), Yukon Geological Survey, p. 41-63.

## INTRODUCTION

The 2017 exploration season saw renewed optimism in investment in Yukon's mineral resources. Junior explorers were increasingly able to raise money for their exploration programs, and the year saw a series of successful options and acquisitions. There were 135 hard rock exploration projects (Fig. 1). Exploration spending was a healthy (CAN)\$90 million, 60% more than spending in 2016 (Fig. 2). Gold continues to be the most sought-after commodity; more than 80% of exploration dollars targeted gold. The remainder of the projects involved exploring for lead-zinc, copper, silver, or nickel-PGEs. More than half of all hard rock projects were drilled: 30 were diamond-drilled and 27 were reverse-circulation or rotary-air-blast drilled (Fig. 3). Development dollars topped out at \$68 million (Fig. 2), primarily for mine development of the Eagle deposit at Victoria Gold Corp.'s Dublin Gulch property, and advancement of the following properties: Goldcorp's Coffee project, Alexco Resources' Keno Hill silver properties, BMC Minerals' Kudz Ze Kayah property and Wellgreen Platinum's Wellgreen property.

Claim staking for the year increased by 40% over the number in 2016, with more than 11 000 new hard rock claims staked. The overall number of claims in good standing remains high at 187 000 claims (Fig. 4). The Yukon Mineral Exploration Program (YMEP) fund was up slightly to \$1.6 million for 2017/18, and helped 38 hard rock and 21 placer exploration projects offset exploration costs (see Torgerson, 2018 in this volume for more information).

In September 2017, the Yukon Resource Gateway Project was announced. The project involves a \$360 million investment from the Yukon and Federal governments for upgrading more than 650 km of road infrastructure to access mineral-rich areas of Yukon (Fig. 5).

The activities and results presented in this report are a summary rather than a comprehensive list of Yukon exploration, development and mining projects. Some results are still pending at the publication deadline of this volume. Summary statistics and analytical results are based on technical reports and news releases by companies, and personal communication with company representatives.

\* [scott.casselman@gov.yk.ca](mailto:scott.casselman@gov.yk.ca)

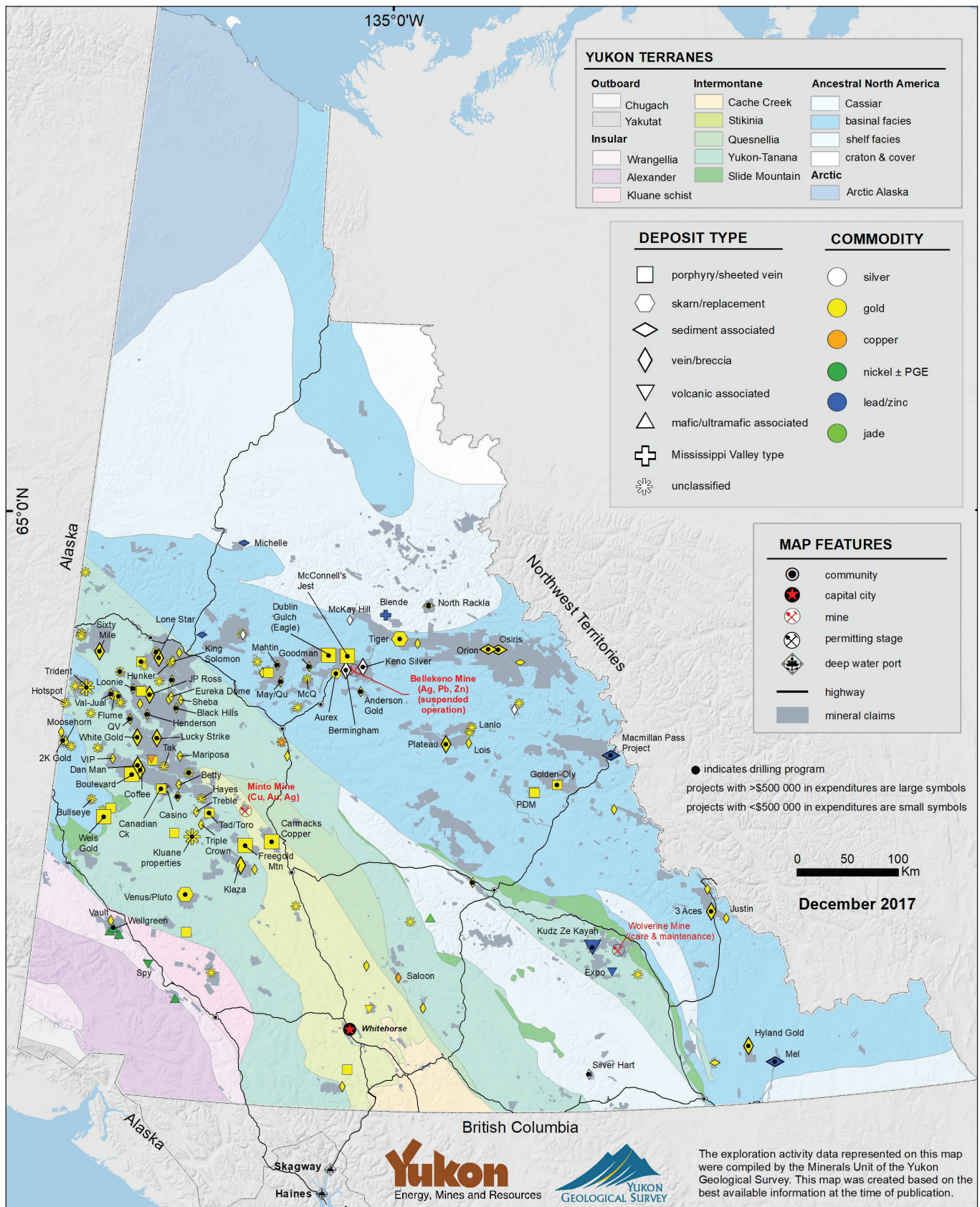


Figure 1. Yukon exploration projects, 2017. Only projects mentioned in this paper, or with more than \$100 000 spending are labelled.

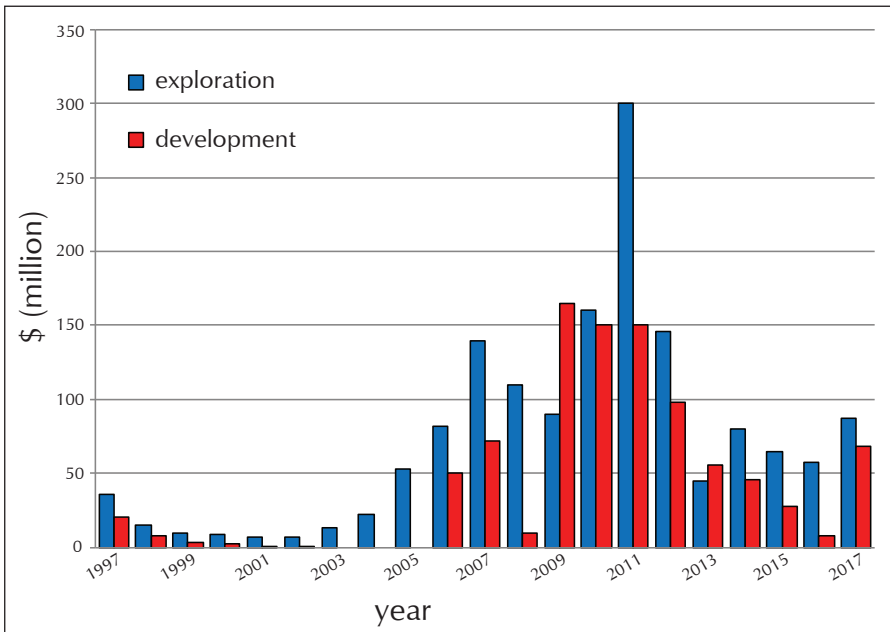


Figure 2. Estimated exploration and development expenditures on hard rock projects, 1997-2017.

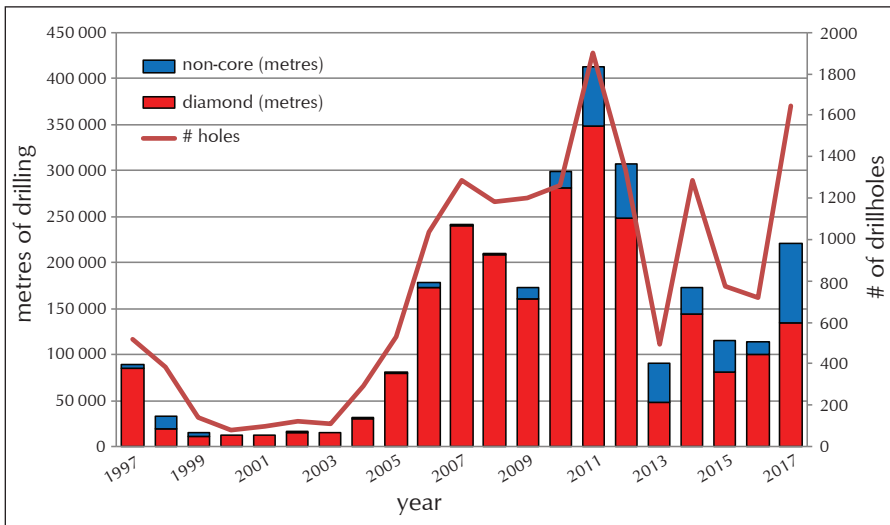


Figure 3. Diamond drilling and reverse-circulation or rotary air blast drilling, 1997-2017.

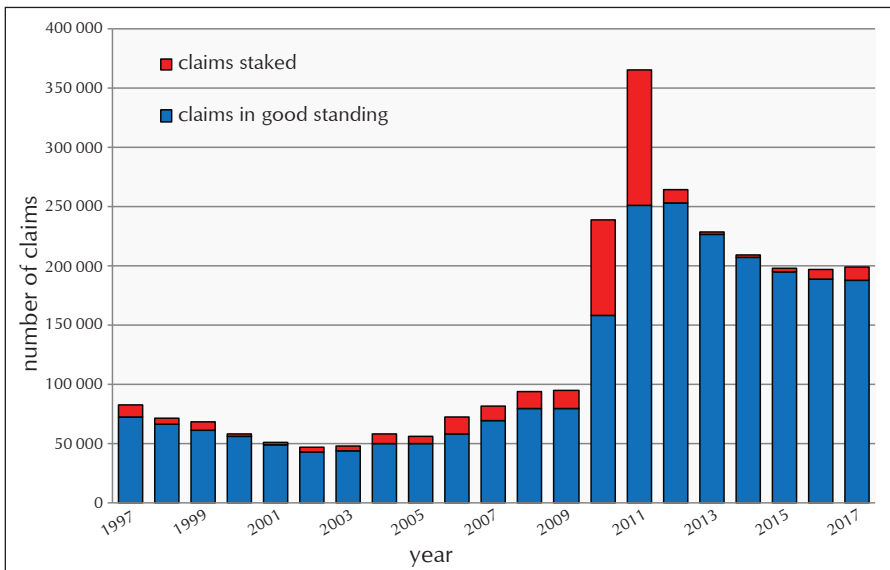


Figure 4. Hard rock claims staked and in good standing, 1997-2017.

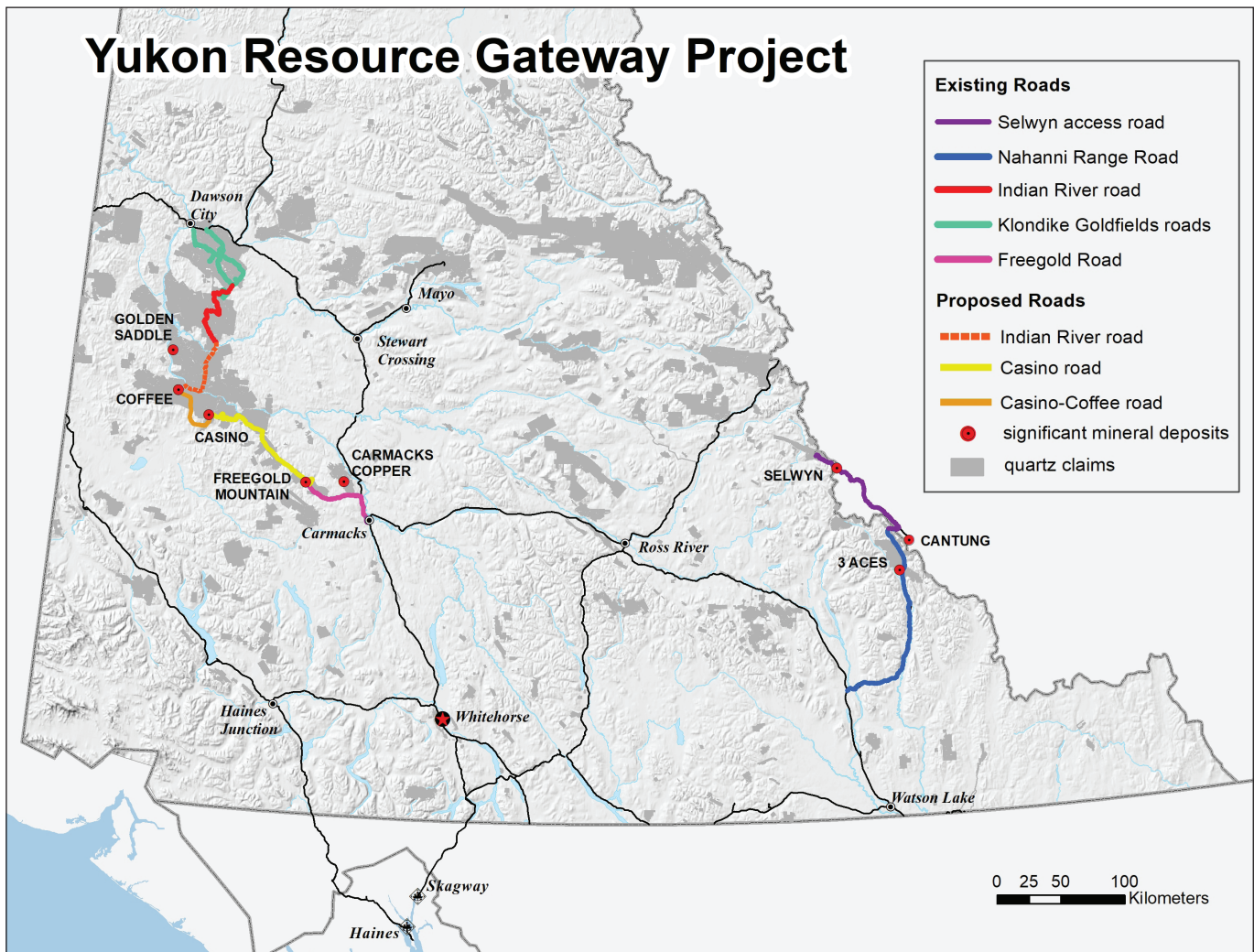


Figure 5. Yukon Resource Gateway Project – existing and proposed roads.

## MINING

Yukon’s sole operating hard rock mine is Capstone Mining Corp.’s ([www.capstonemining.com](http://www.capstonemining.com)) **Minto** copper-gold-silver mine. Minto produced 29,374,912 lbs of copper, 22,093 ounces of gold and 140,814 ounces of silver in the first nine months of 2017. With the rise in the price of copper, Capstone announced an extension of the mine life to 2020. The company will evaluate other deposits on the site for possible re-inclusion into its reserves, which could extend the life beyond 2020.

Alexco Resources Ltd. ([www.alexcoresource.com](http://www.alexcoresource.com)) is advancing three of its deposits in the Keno Hill silver district. The 2017 exploration program focused on

drill-definition of the high-grade **Birmingham** deposit (37 holes, 13832 m); DDH K-17-0658 intersected 5.15 m of 1547 g/t Ag. A 580 m decline at Birmingham and a 965 m decline for the **Flame & Moth** deposit were both initiated (Fig. 6). The company is planning 5000 m of underground drilling and expects production to begin at Birmingham and the Flame & Moth deposits and to restart at the **Bellekeno** mine by late 2018. An updated resource was announced in January 2017, increasing the district indicated mineral resource approximately 22% to 67.5 million ounces of silver.

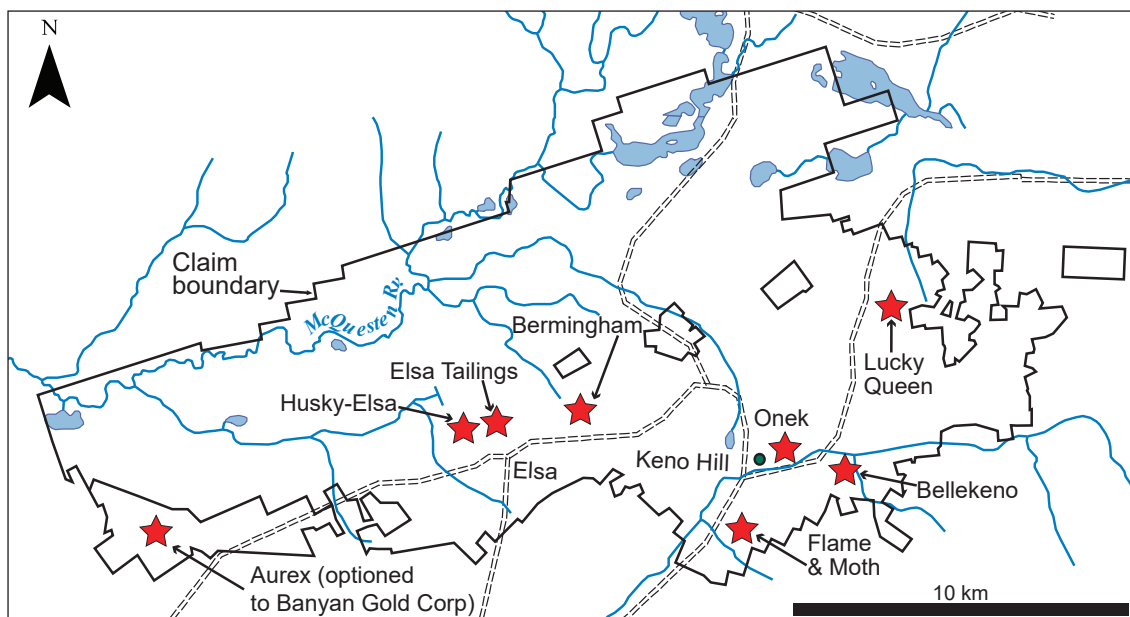


Figure 6. Sketch of main deposits of Alexco's Keno Hill property.

The inactive **Wolverine** mine of Yukon Zinc Corporation ([www.yukonzinc.com](http://www.yukonzinc.com)) has been on care and maintenance since January 2015. The company completed an updated National Instrument (NI) 43-101 mineral resource and preliminary economic assessment (PEA) in September 2017 (both unreleased). In October, the company announced that it was seeking new investment partners to restart the mine.

## MINE DEVELOPMENT

Victoria Gold Corp. ([www.vitgoldcorp.com](http://www.vitgoldcorp.com)) began mine development at the **Eagle** intrusion-related gold deposit, within its Dublin Gulch property in central Yukon. Capital Expenditures are estimated at \$369 million. Once in full production, the company expects to produce 200,000 ounces of gold per year from the open pit operation. Continued exploration on the property has met with success. Exploratory drilling (14 drillholes) was completed adjacent to and below the proposed Eagle mine pit. Highlights include 607.8 m of 0.56 g/t Au in core from drill hole DG17-930C. The new drill results offer potential for Eagle pit expansion. Overall, exploration on the property included soil sampling, airborne and ground geophysics, trenching and 33 650 m of diamond drilling in 205 holes (Fig. 7).

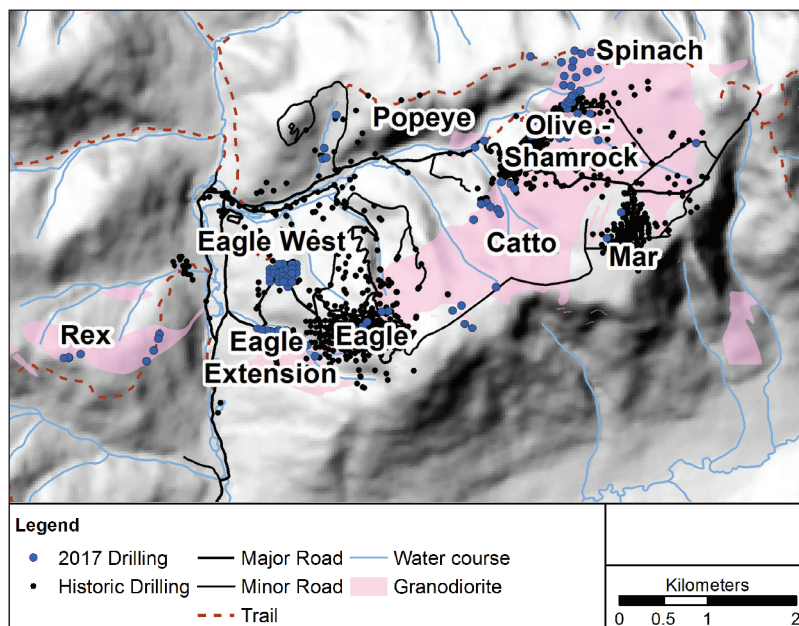


Figure 7. Plan map of Victoria Gold's Dublin Gulch property, indicating current and historic drilling.

## ADVANCED PROJECTS

Goldcorp Inc. ([www.goldcorp.com](http://www.goldcorp.com)) continued to advance the **Coffee** gold property in western Yukon. The high-grade gold project is envisioned as a heap leach, open-pit operation. Goldcorp's 2017 exploration program involved more than 68 000 m of reverse circulation and diamond drilling (602 holes). Reported drill highlights include 20.3 m of 7.24 g/t Au in reverse circulation hole CFR1452 at the new Amerikona zone. Goldcorp also conducted drilling to test the sulphide potential, and is undertaking sulphide metallurgical studies. An application for permitting for the Coffee project was submitted to the Yukon Environmental and Socioeconomic Assessment Board (YESAB) in the spring of 2017. The review board determined that consultation with the First Nations was inadequate. The company is currently in discussions with YESAB and the involved First Nations to determine next steps.

BMC Minerals Ltd. (<http://bmcminerals.com>), a private company, continued to advance its **Kudz Ze Kayah** volcanogenic massive sulphide (VMS) copper-zinc-lead property in the Finlayson district of east-central Yukon. The 2017 work program included soil sampling, geological mapping, a 3D seismic survey and drilling: 4235 m of diamond drilling in 19 holes and 616 m of RC drilling for geotechnical purposes in 25 holes. Exploration results are pending. An application to develop the ABM deposit on the property was submitted to YESAB in March 2017 and is in the adequacy review stage. A positive pre-feasibility study on the ABM deposit was released in May, 2017. The study envisions an open pit and small underground mine, processing 2 million tonnes per year, and a nine year mine life. In January, BMC acquired the nearby Wolf and Fyre Lake (Kona) VMS deposits, and completed reconnaissance mapping and prospecting on these properties.

Western Copper and Gold Corp. ([www.westerncopperandgold.com](http://www.westerncopperandgold.com)) delayed its re-submission to the Yukon Environmental and Socioeconomic Assessment Board for its **Casino** copper-gold porphyry deposit in western Yukon. The one-year delay allows the company to work on a redesign of the tailings management facility to address concerns raised during community consultation meetings. In addition, there were concerns about how the access road would impact the Klaza caribou herd. The company continues to carry out environmental baseline work. The project is expected to enter the panel review process at the end of 2018.

## PRECIOUS METALS EXPLORATION – GOLD

ATAC Resources ([www.atacresources.com](http://www.atacresources.com)) explored its extensive **Rackla Gold** project (Fig. 8) along the northern margin of Selwyn basin. Within the Carlin-style eastern Osiris cluster, the company completed 11 214 m of diamond drilling in 29 holes: DDHOS-17-249 returned two intersections of high-grade gold - 15.24 m of 13.52 g/t Au and 10.42 m of 7.97 g/t Au, extending the Sunrise zone at depth. At the carbonate replacement Tiger gold deposit in the western Rau project, diamond drilling (1371 m in 12 holes) tested for mineralization outside the proposed pit shell. Diamond drill hole RAU-17-156 intersected 56.77 m of 4.08 g/t Au. ATAC received a positive recommendation from YESAB for an access road to the site, and is awaiting final approval for road construction.

In April 2017, Barrick Gold Corp. ([www.barrick.com](http://www.barrick.com)) optioned ATAC Resources Ltd.'s **Orion** block, in the central part of the Rackla Gold property (Fig. 8). Barrick committed to a \$4.9 million exploration program at Orion in 2017. Exploration work included soil and rock geochemistry, trenching, mapping and drilling: 2503 m of diamond drilling in 4 holes and 1555 m of reverse circulation drilling in 32 holes. No results have been released to date.

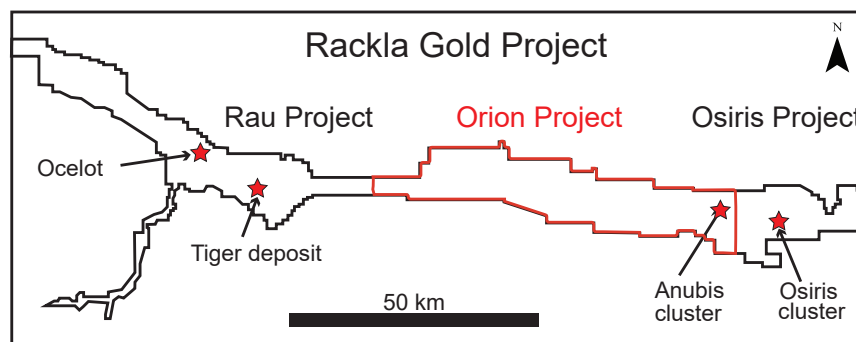


Figure 8. Map of the Rackla Gold property.

White Gold Corp. (WGC; [www.whitegoldcorp.ca](http://www.whitegoldcorp.ca)) acquired a substantial land package in the White Gold district from Wildwood Exploration Inc. and Shawn Ryan in 2016. In May 2017, WGC expanded its holdings by acquiring five properties from Kinross Gold, including the **Golden Saddle** (Fig. 9), the original White Gold district discovery. The entire claim package currently includes more than 19 400 claims. In December 2016, Agnico Eagle Mines Ltd. invested \$14.5 million in WGC, for a 19.9% interest in the company. WGC completed work on 29 of its properties including the following activities: soil sampling, IP/resistivity surveys, airborne DIGHEM surveys, geological mapping and drilling. Diamond and reverse-circulation drilling at the Golden Saddle deposit focused on twinning holes (for quality assurance and testing for footwall mineralization below historic drilling), as well as infill and step-out drilling. Infill hole WTGS17DD-1070 returned 4.57 g/t Au over 34 m from 155 m depth. Reverse circulation drilling at the nearby Arc extended the deposit strike length by 250 m:

WHTARR17RC-002 returned 12.19 m of 1.52 g/t Au. RAB drilling at the Loonie Property returned 4.6 g/t Au over 7.6 m from hole 17LO025. At the JP Ross property, core from diamond drill hole 17JPR002 returned 21.87 g/t Au over 3.05 m.

Golden Predator Mining Corp. ([www.goldenpredator.com](http://www.goldenpredator.com)) completed an extensive drill program on its **3 Aces** property (Fig. 10) beginning in March 2017: 1905 m of diamond drilling in 20 holes, 17 394 m of reverse circulation drilling in 189 holes, and 115.8 m of rotary air blast (RAB) drilling in one hole. Other work at this property in southeastern Yukon included soil and rock sampling, trenching, geological mapping and road construction. The extensive work uncovered two new gold veins at the Hearts and Clubs zones. Drilling at the Ace of Hearts doubled the known strike length of the vein and increased the length of the Hearts-Clubs corridor to 1.6 km. Drill highlights within the corridor include hole 3A17-203 with a drill intersection of 19.81 m of 3.32 g/t Au. Other highlights include 13.26 g/t Au over 39.63 m in core from 3A17-098, a step-out hole at the Ace of Spades vein.

Rockhaven Resources Ltd. ([www.rockhavenresources.com](http://www.rockhavenresources.com)) welcomed an investment from Coeur Mining (\$675 000) in March, 2017, for its **Klaza** property in southwestern Yukon. The company continued to advance its flagship epithermal gold-silver property. The company's diamond drill program (15 922 m, 96 holes) included infill, step-out, and drilling for metallurgical studies. Drill highlights include 17.80 g/t Au, 257 g/t Ag, 1.28% Pb and 1.81% Zn over 6.54 m in Hole 398. The company also undertook trenching and geophysics, and conducted engineering studies.

Goldstrike Resources Ltd. ([www.goldstrikeresources.com](http://www.goldstrikeresources.com)) continued working its flagship **Plateau** gold property. Goldstrike Resources Ltd. struck a deal with Newmont Mining in March of 2017 for the property, in central Yukon. The deal involves cash payments and share purchases totaling \$53 million over 10 years and a completed feasibility study to earn 75%. The Phase 1 commitment of the deal requires cash payments and exploration expenditures totaling \$14 million in the first 2 years. The exploration program at Plateau

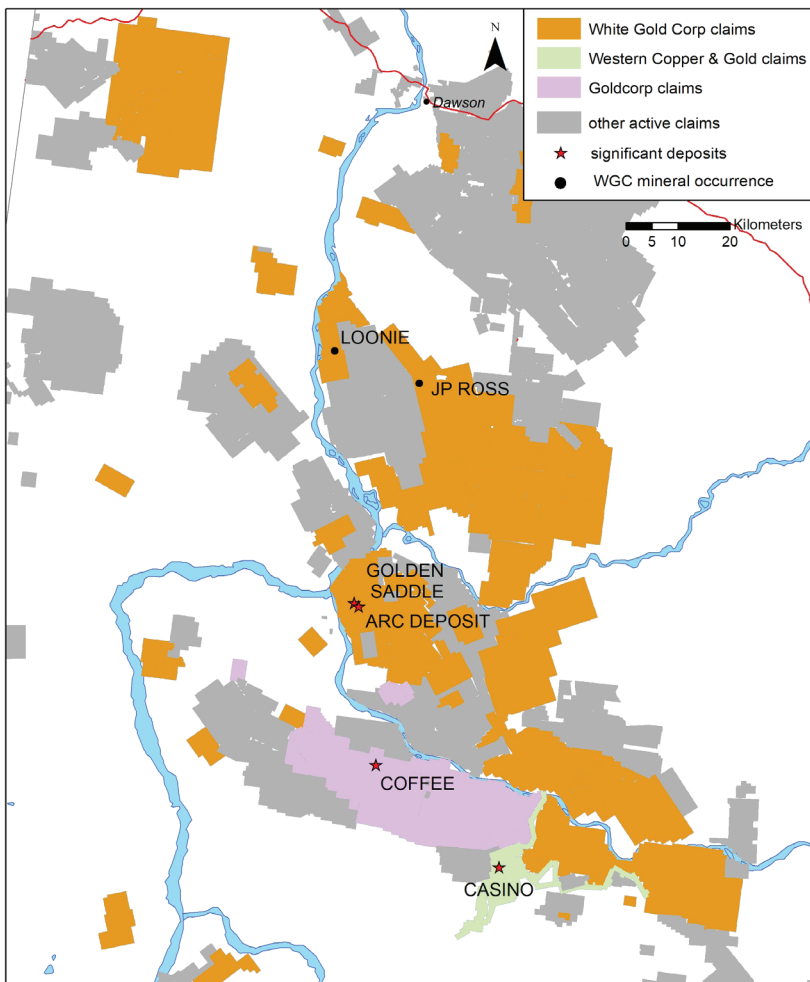
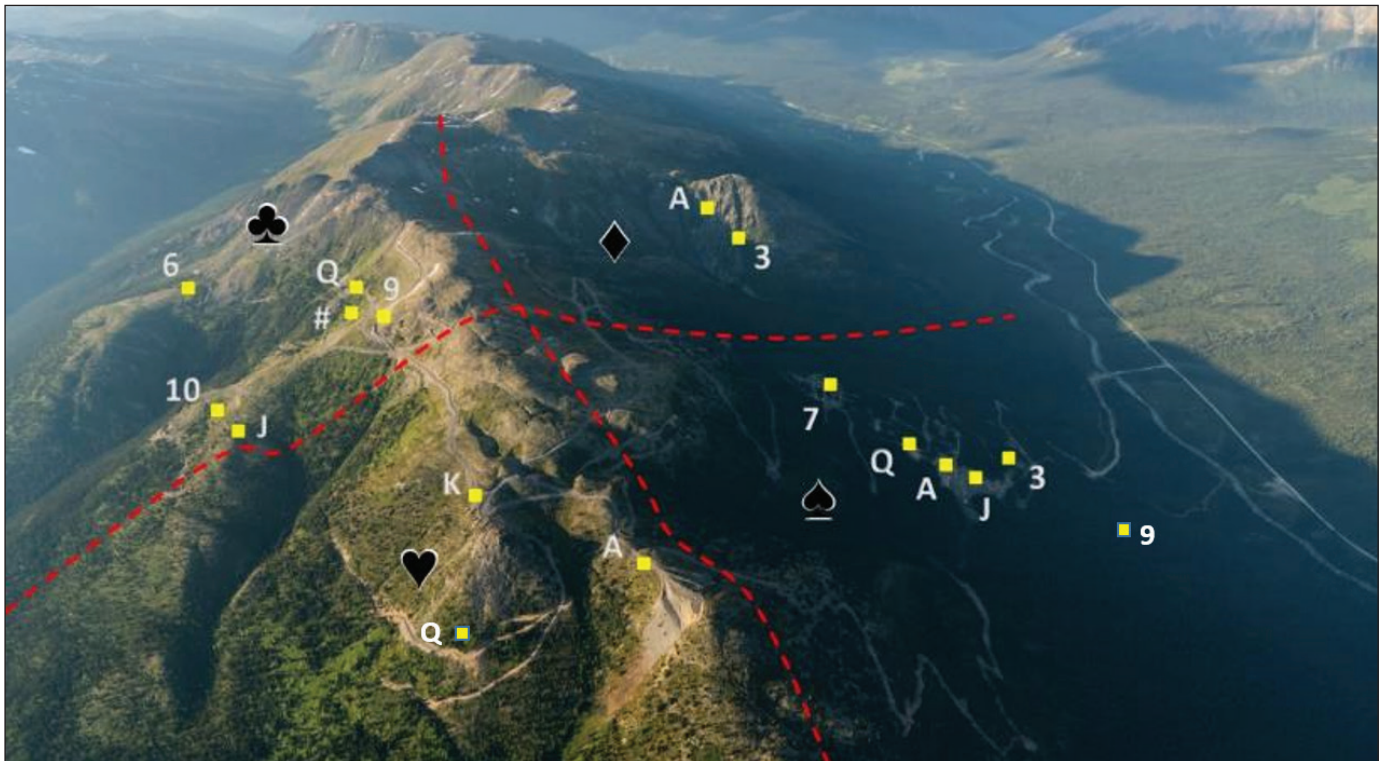


Figure 9. White Gold Corp. claim holdings.

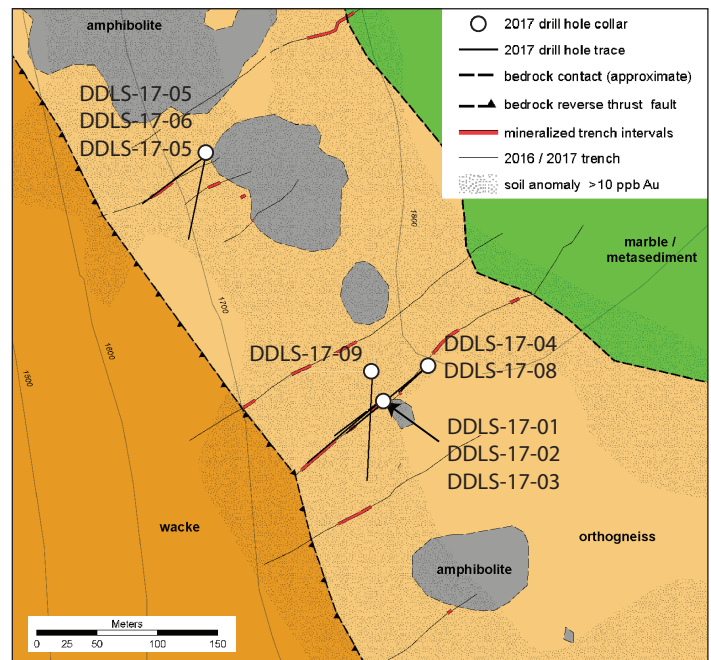


**Figure 10.** Annotated aerial photo of 3 Aces property identifying zones and known veins, view looking north. Photo: Golden Predator Mining Corp.

included 2972 m of diamond drilling in 23 holes, staking, airborne and ground geophysics, remote sensing acquisition, sampling and mapping. Drill hole PBSZ-17-02 intersected multiple mineralized intercepts at the Bonanza zone: 0.5 m of 1.2 g/t Au, 2.0 m of 1.00 g/t Au and 0.5 m of 3.08 g/t Au near surface.

The **Lucky Strike** property of Goldstrike Resources Ltd., in the White Gold district, was drilled for the first time in 2017. The nine hole (1032 m) diamond drilling program at the Monte Carlo zone returned 5.36 g/t Au over 22 m in core from DDLS-17-09 (Fig. 11). Drilling targeted a 450 by 1450 m geochemical anomaly and coincident magnetic anomaly thought to represent a regional scale shear zone. The company also completed 1091 m of mechanized trenching and a ground magnetic survey.

Goldstrike Resources also staked claims adjacent to the Wels Gold property in southwestern Yukon in 2017 and explored this new property (**Bulls Eye**) with soil sampling and prospecting. The soil survey outlined a 250 by 200 m gold-in-soil anomaly with values up to 215 ppb Au. In addition, the company staked new claims in the Moosehorn area of western Yukon (**Hot Spot** property) and explored with a soil survey and hand pitting. The soil survey outlined a 150 by 150 m gold-in-soil anomaly with values up to 4110 ppb Au.



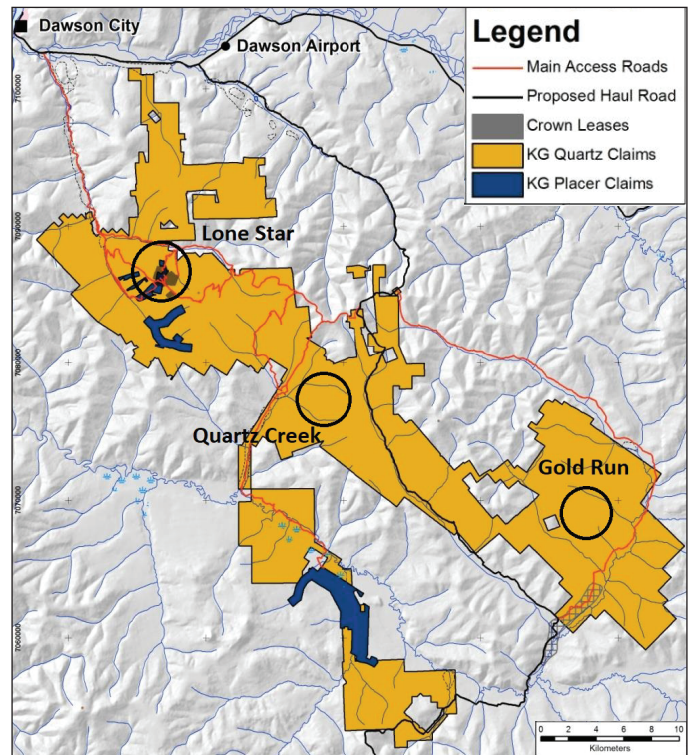
**Figure 11.** Lucky Strike drillhole map with geology, modified from Goldstrike image accessed December 7, 2017.

Triumph Gold Corp. ([www.triumphgoldcorp.com](http://www.triumphgoldcorp.com)) completed a substantial program on its **Freegold Mountain** property: Tinta Hill, Nucleus and Revenue deposits. The company welcomed a \$6.3 million investment by Goldcorp which earned Goldcorp a 19.9% interest in Triumph. Work on the property included 35 diamond drillholes (12 904 m) at Revenue and Nucleus, and more than 600 m of trenching and extensive soil sampling at Tinta Hill. Step-out drilling at Revenue demonstrated that the Revenue diatreme is part of a larger porphyry system. East of the Revenue diatreme, at the Blue Sky zone, 57 m of 1.08 g/t gold and 0.285% copper were intersected in diamond drill hole RVD17-13. The company also performed soil sampling and geological mapping at its Severance gold and Tad/Toro copper properties in west-central Yukon.

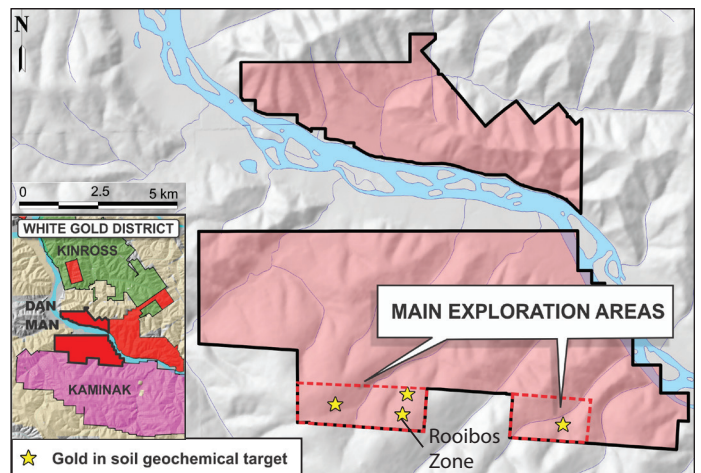
Klondike Gold Corp. ([www.klondikegoldcorp.com](http://www.klondikegoldcorp.com)) explored its **Klondike Goldfields** property. The company completed 70 diamond drillholes (8620 m) at the Lone Star zone of its Klondike project, targeting the Bonanza, Nugget and Eldorado faults. Diamond drill hole LS17-81 intersected 41.1 m of 2.1 g/t Au. KGC also completed 250-line-kilometres of ground magnetics and VLF-EM surveys between the Lone Star and Quartz Creek showings (Fig. 12).

Banyan Gold Corp. ([www.banyangold.com](http://www.banyangold.com)) explored its **Hyland Gold** project in southeastern Yukon with drilling, trenching and soil sampling. The 2017 diamond drill program (3847 m, 25 holes) was designed to expand the defined resource of the Main Zone deposit, but also included drilling for metallurgical studies. Drill hole HY17-062 intersected 27.4 m of 1.26 g/t Au and 4.11 g/t Ag. Banyan also completed a 10 hole diamond drill program (1422 m) at its newly optioned Aurex-McQuesten property, 15 km south of the Dublin Gulch property. At McQuesten, drill hole MQ17-026 intersected 157 m of 0.6 g/t Au and 1.1 g/t Ag, starting from surface. At Aurex, drill hole AX17-028 intersected 1.0 g/t Au over 1.32 m. Soil sampling, trenching and an airborne geophysical survey were also carried out.

Arcus Development Group Inc. ([www.arcusdevelopmentgroup.com](http://www.arcusdevelopmentgroup.com)) completed a 20-hole reverse circulation drill program (2880 m) at its **Dan Man** gold property adjacent to the Coffee gold project. Drilling tested gold-in-soil anomalies and structural zones interpreted from a magnetic survey. Results include 7.62 m of 2.13 g/t Au in hole RC-RB-17-05 at the Rooibos Zone (Fig. 13).



**Figure 12.** Claim map of Klondike Goldfields property of Klondike Gold Corp., modified from Klondike Gold Corp. corporate presentation, December, 2017.



**Figure 13.** Main exploration areas at the Dan Man property of Arcus Development Group. Modified from Arcus Development Group graphic accessed December 7, 2017.

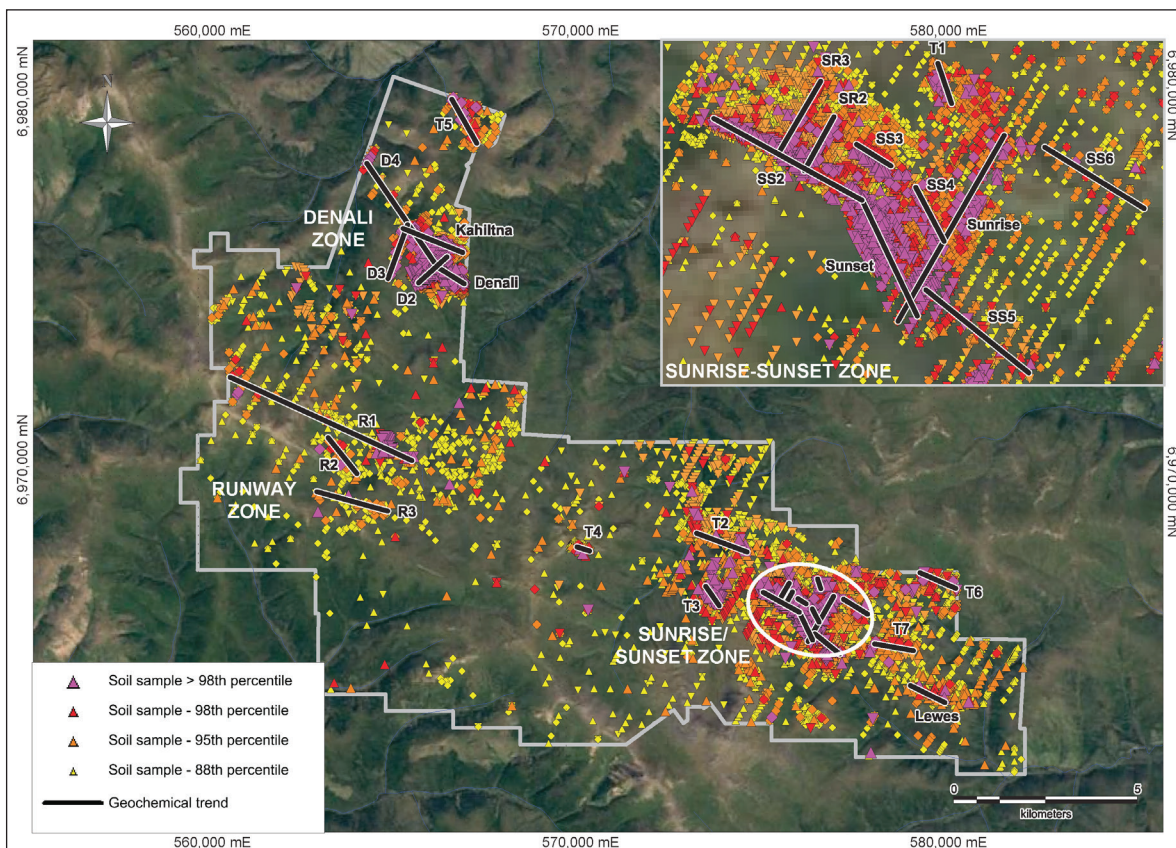
Comstock Metals Ltd. ([www.comstock-metals.com](http://www.comstock-metals.com)) explored its **QV** gold property (11 km north of the Golden Saddle deposit in the White Gold district) with a 1500 m diamond drill program. The program tested the along-strike potential of the VG deposit. The company also completed detailed soil sampling grids. Results are pending.

Provenance Gold Corp. (<http://provenancegold.com>) optioned claims in the Moosehorn Range of western Yukon in 2016. The company performed soil and rock geochemical surveys, geological mapping and diamond drilling in 2017. The soil program covered an area of gold-bearing quartz veins uncovered during road construction located near the intersection of a large north-trending structural zone and an interpreted northeast-southwest trending lineament. A 1.8-m chip sample uphill of the trenches returned a value of 122.5 g/t Au. The drill program (1836 m in 13 holes) focused on the Kenyon Creek headwaters area, and on a potential lode gold source area of the Great Bear Creek placer operations. Assay results are pending.

K2 Gold Corp. (<http://K2gold.com>) completed infill and step-out diamond drilling (1232 m, 11 holes) at its **Wels**

intrusion-related gold property in southwestern Yukon, extending the discovery Saddle zone. Highlights include 2.37 g/t Au over 28.50 m in DDH17-06. The company discovered a new mineralized zone (Southwest Spur) through prospecting 1.2 km southwest of the Saddle zone, which is hosted in highly altered and fractured mafic rock. K2 Gold also explored the Flume and Storck projects in west Yukon. The Storck program involved ridge and spur soil sampling (peak values of 144.6 ppb gold). The Flume program involved soil sampling, prospecting and trenching. The company outlined a 1.2 by 3 km soil anomaly with assays up to 247 ppb Au. Prospecting returned mineralized samples, including one sample up to 4.76 g/t Au.

Independence Gold Corp. ([www.ingold.ca](http://www.ingold.ca)) worked its **Boulevard** property, which is contiguous with Goldcorp's Coffee property in the White Gold district. The company completed 977.5 m of drilling in nine diamond drillholes along the 2.4 km long Sunrise-Sunset zone. In diamond drill hole BV17-60 drilling intersected 2.97 g/t Au over 4.5 m (Fig. 14). Extensive sampling outlined five new gold-in-soil trends on the property and extended the Kahiltna



**Figure 14.** Zones and soil geochemistry at the Boulevard property of Independence Gold, modified from Independence Gold graphic accessed December 7, 2017.

gold-in-soil anomaly. Independence also performed prospecting, geological mapping and trenching on its Moosehorn property in west-central Yukon and soil sampling and geoprobe testing at its Henderson Property in the White Gold district.

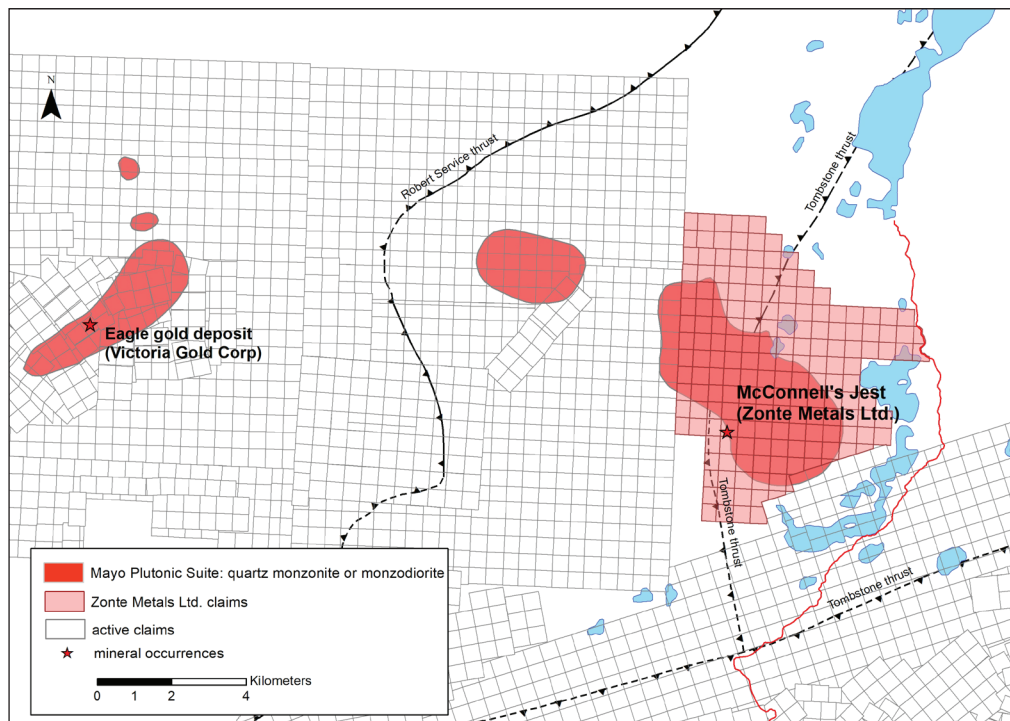
Kestral Gold Inc. (<http://www.kestrelgold.com>) drilled the **Val-Jual** property south of Dawson City in west-central Yukon (13 reverse circulation holes, 922 m). Drilling intersected anomalous gold mineralization hosted in granite; drill hole 17RC-01 intersected 13.7 m of 0.93 g/t Au. Drill hole 17RC-11, returned low-grade gold throughout most of its length, returning an intercept of 0.205 g/t Au over 59.13 m.

Zonte Metals Inc. (<http://www.zontemetals.com>) diamond drilled its intrusion-related **McConnell's Jest** gold project (Fig. 15), 15 km east of Victoria Gold's Eagle gold deposit. This newly discovered property underwent a modest five-hole drill program (1027 m). Drill highlights include 29.6 m of 0.53 g/t Au in hole MJ-04.

Strikepoint Gold Inc. ([www.strikepointgold.com](http://www.strikepointgold.com)) worked its extensive claim packages in the Mayo, Kluane and North Canol regions. At the Mayo properties, the company completed 630 m of diamond drilling in six holes at **Mahtin** and **May-Qu**. Mahtin drilling highlights included 1.80 g/t Au over 3.05 m and 1.62 g/t Au over 4.57 m in hole 17MAH02. At May-Qu, hole 17MAY03 intersected

0.68 g/t Au over 3.05 m. At the North Canol properties, surface grab samples at **Golden Oly** returned up to 10.65 g/t Au, up to 364 g/t Ag and up to 0.52% Cu. At **PDM**, surface grab samples returned up to 9.8 g/t Au, 2.8% Cu and 245 g/t Ag. In the Kluane region, at the **Pluto** property, 12 RAB drill holes were completed (1294 m), along with geological mapping and prospecting. Highlights include intersecting 15.24 m of 1.05 g/t Au in hole 17-CRN-02.

Trifecta Gold Ltd. ([www.trifectagold.com](http://www.trifectagold.com)) explored its road-accessible **Trident** property in the White Gold district. The company carried out a soil sampling program and diamond-drilled five holes (546.5 m) to extend mineralization intersected in 2013 drilling. Highlights include drill hole SE-17-001 which intersected several mineralized zones: 2.13 m of 1.425 g/t Au, 5.00 m of 0.665 g/t Au and 2.45 m of 1.048 g/t Au. Grassroots programs were undertaken at its **Treble**, **Triple Crown** and **Eureka** properties. Soil sampling, prospecting and hand trenching were carried out at Treble and Triple Crown in west-central Yukon. At Treble, peak soil sample values were 135 ppb; the highest rock sample result was 0.885 g/t Au from a limonitic hydrothermal breccia. At Triple Crown, one grab sample assayed 1465 g/t Ag, 52.5% Pb and 0.176 g/t Au. At Eureka, in the White Gold district, grid soil samples returned values up to 545 ppb Au.



**Figure 15.** Location of Zonte Metals' McConnell's Jest property with respect to Victoria Gold Corp.'s Dublin Gulch property.

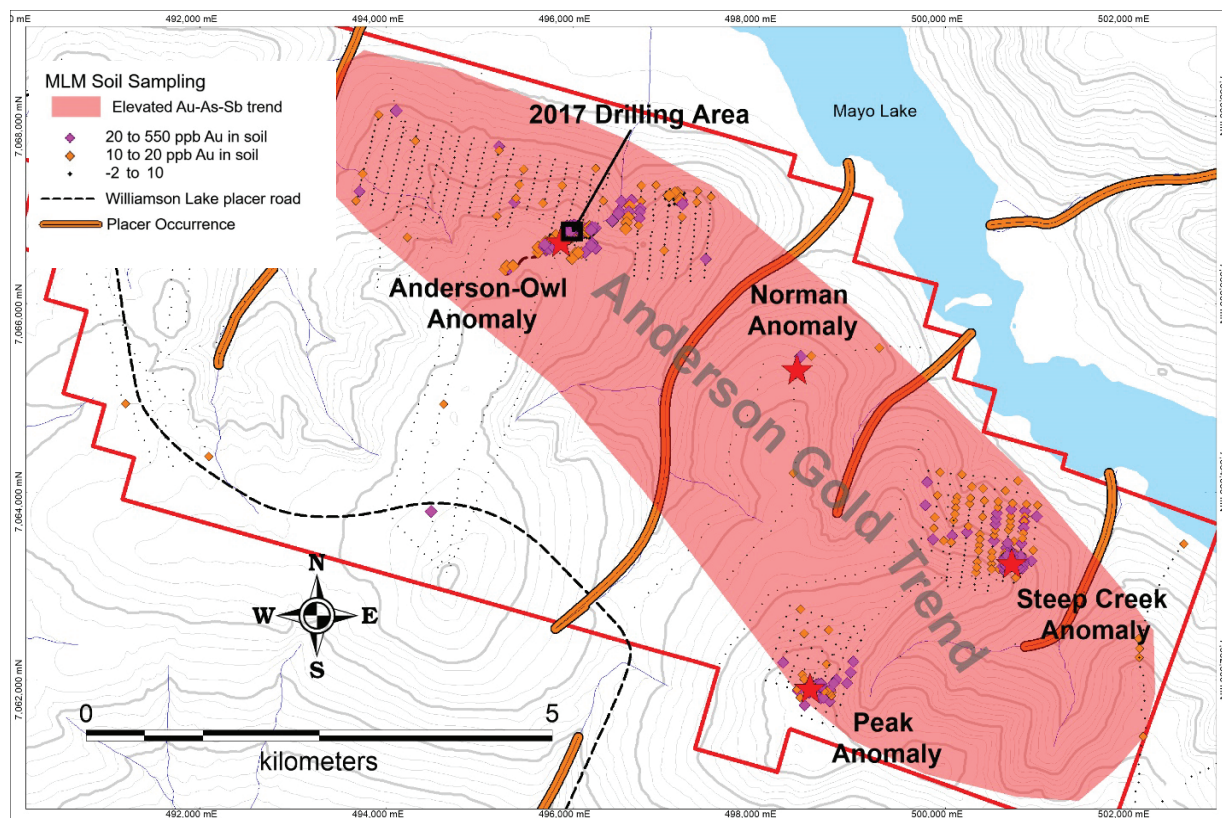
Mayo Lake Minerals ([www.mayolakeminerals.com](http://www.mayolakeminerals.com)), a private company, drilled its **Anderson Gold** property in central Yukon for the first time in 2017 (Fig 16). The reverse circulation program comprised 640 m of drilling in 8 holes on two separate sections, 50 m apart. The program revealed a new bedrock vein gold system with two mineralized structures correlated across both fences. The gold is associated with arsenic, antimony and mercury. Drill hole RCH MLM17-005 intercepted 0.77 g/t Au over 6.1 m starting at 3.0 m depth.

Four Nines Gold Inc. ([www.fourninesgold.ca](http://www.fourninesgold.ca)) undertook exploration on the **Mariposa** property in the White Gold district. A total of 15 trenches were completed over Hackly, Skookum Main and Skookum West. The focus of the trenching was to establish controls and trends of mineralization on strike between zones. The gold-bearing, structurally controlled targets remain open in all directions, and Four Nines has refined the overall geological setting in planning for a 2018 drill program. Several access trails were also established in the area, and road improvements were completed on the property that will facilitate future work. Significant results from trenching include 4.5 m of 1.68 g/t Au in TR17-13.

Nevada Zinc's ([www.nevadazinc.com](http://www.nevadazinc.com)) majority-owned subsidiary (Generic Gold Corporation) worked the **VIP** gold property in western Yukon. The field program included trenching, soil sampling, prospecting, geological mapping and geoprobe sampling. Excavator trenching on the 700-m-long Big Creek soil anomaly identified strong oxidation and alteration. Results are pending.

A newly formed company - Territory Metals Corp. ([www.territorymetals.com](http://www.territorymetals.com)) - acquired several claim blocks from Strategic Metals Ltd. in central Yukon: the gold-silver **Hinton, Plata** silver and **Lanlo** gold properties. The company worked the Lanlo gold prospect, contiguous with Goldstrike's Plateau property in central Yukon, conducting geological mapping, prospecting and soil sampling. Results are pending.

Cantex Mine Development Corp. ([www.cantex.ca](http://www.cantex.ca)) focused on its **North Rackla** property with a planned diamond drill program of five holes targeting a gold-lead-zinc-silver mineralized dolomite unit. Results are pending.



**Figure 16.** Location of drilling at Mayo Lake Minerals' Anderson Gold property. Orange lines denote placer producing streams. Graphic accessed November 16, 2017.

Taku Gold Corp. ([www.takugold.com](http://www.takugold.com)) soil sampled its newly acquired **McQ** property in the Mayo region; results returned up to 260 ppb Au. The gold-in-soil anomaly extends 300 m in a westerly direction. Gold is correlated with arsenic values up to 1682 ppm.

### PRECIOUS METALS EXPLORATION – SILVER

Metallic Minerals Corp. ([www.metallic-minerals.com](http://www.metallic-minerals.com)) explored its **Keno Silver** project in the historic Keno Hill silver district. The company identified 12 exploration targets over the winter and conducted soil sampling, mapping, trenching and VLF/magnetic geophysical surveys prior to drilling. Metallic drilled 1320 m in 14 holes, intersecting 407 g/t Ag, 0.834 g/t Au, 6.35% Zn and 3.39% Pb over 2.65 m in hole CH17-021 and 1405 g/t Ag, 0.282 g/t Au, 3.72% Zn and 25.98% Pb over 1.6 m in hole CH17-23 at the Caribou target area. At the McKay Hill property (Fig. 17), the program consisted of prospecting and geological mapping. Assays from 13 grab and chip samples were between 372 and 988 g/t Ag, and between 0.18 and 24.4 g/t Au. Other results include up to 77.8% Pb, a peak of 14.7% Zn, and up to 7.97% Cu.

The **Silver Hart** property of CMC Metals Ltd. ([www.cmcmetals.ca](http://www.cmcmetals.ca)) in southern Yukon was drilled with 14 shallow holes for a total of 843 m. Drilling was designed to confirm and infill historic results and extend known mineralization. Drill results from CMC17-01 intersected 2 m of 117 g/t Ag, 4.03% Pb and 5.11% Zn. The property is approximately 60 km north of the Silvertip mine in British Columbia, which was bought by Coeur Mining in September, 2017.

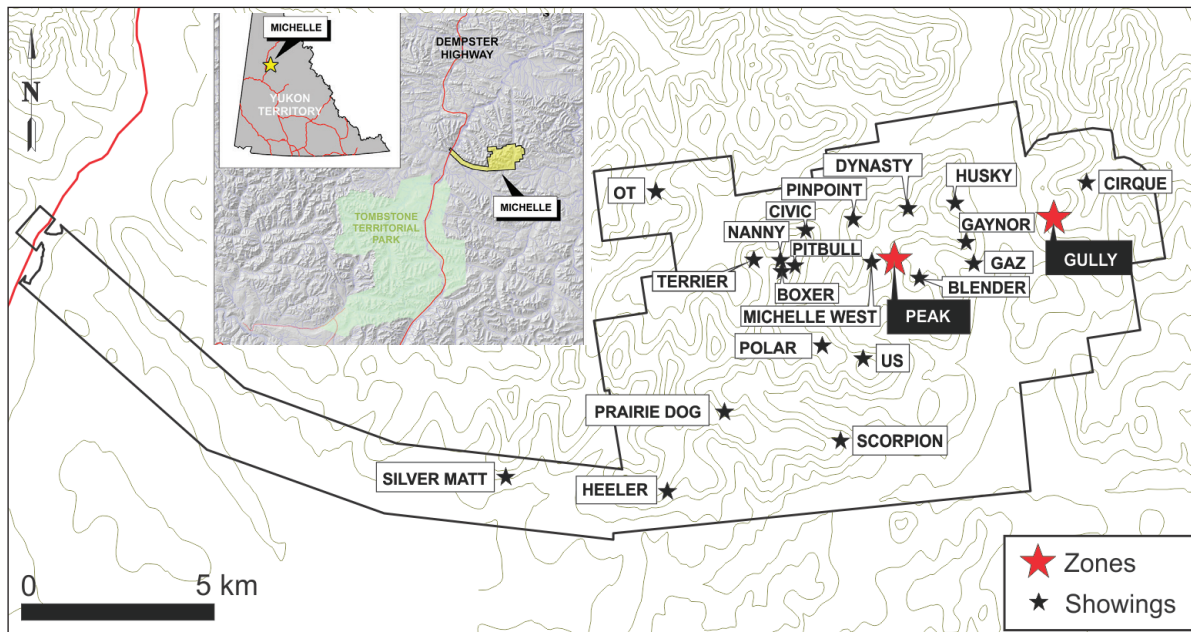
The **Michelle** property of Silver Range Resources Ltd. ([www.silverrangeresources.com](http://www.silverrangeresources.com)) underwent prospecting, geological mapping and hand trenching (Fig. 18). At the Prairie Dog showing, 18 out of 31 grab samples assayed greater than 1% zinc, with a peak value of 46.43% Zn. Mineralized float from the Cirque Showing returned up to 30.5% Zn and 172 g/t Ag.

### NICKEL-COPPER-PLATINUM GROUP METALS EXPLORATION

Wellgreen Platinum Ltd. ([www.wellgreenplatinum.com](http://www.wellgreenplatinum.com)) continued to advance its mafic/ultramafic intrusion-hosted nickel-copper-PGM (platinum group metals) **Wellgreen** deposit in southwestern Yukon. A new preliminary economic assessment (PEA) was released in the spring of 2017; it envisions capital costs of \$586 million for the mine and a 25 year mine life. Wellgreen also released an updated mineral resource for the project; it estimates a measured and indicated mineral resource of 362 million tonnes hosting 2.08 billion pounds of nickel, 6 million ounces of PGMs plus gold, 1.1 billion pounds of copper and 121 million pounds of cobalt, as well as a significant inferred resource. The company conducted 2720 m of diamond drilling in 15 holes, focusing on a combination of infill and metallurgical holes. Results are pending. The program also included surface mapping and rock chip sampling to test the extension of mineralization to the east and north of the main deposit. In addition to metallurgical testing, the company is conducting flowsheet optimization and pilot plant testing.



**Figure 17.** Lauren Blackburn, project geologist with Metallic Minerals at the McKay Hill silver property.



**Figure 18.** Map indicating the location of Silver Range Resources' Michelle property and the location of showings on the property, modified graphic accessed from Silver Range December 11, 2017.

Group Ten Metals Inc. ([www.grouptenmetals.com](http://www.grouptenmetals.com)) worked its Klauane area Ni-Cu-PGE properties: **Catalyst**, **Spy** and **Ultra**. The 2017 exploration program included prospecting, geological mapping and rock sampling. Results are pending.

## BASE METALS EXPLORATION

Copper North Mining Corp. ([www.coppernorthmining.com](http://www.coppernorthmining.com)) conducted a drill program on its **Carmacks Copper** copper-gold-silver property in central Yukon. The company completed 4000 m of diamond drilling in 32 holes. Zone 2000s and zone 13 were drill-tested. As well, the company drilled 3 "wildcat" holes. Assay results are pending.

Newly formed company Fireweed Zinc (<http://www.fireweedzinc.com/>) acquired the **Tom** and **Jason** sedimentary exhalative lead-zinc deposits comprising the Macmillan Pass project in December 2016 from Hudbay Minerals (Fig.19). Their 2017 program included 2202 m of diamond drilling in 14 holes, helicopter-borne VTEM/magnetics, LiDAR, aerial photography, geochemical sampling and geological mapping. The drill program was designed to verify historic results, step-out from the defined resource and produce samples for metallurgical studies. Highlights include drill hole TS17-03 which intersected 10.2% Zn, 6.3% Pb and 87.7 g/t Ag over 24.4 m; and drill hole JS17-06, which returned 13.2% Zn and 3.4% Pb over 26.3 m. An updated 43-101 resource incorporating drill results is expected by the end of 2017.

Cariboo Rose Resources Ltd. ([www.caribooroze.com](http://www.caribooroze.com)) completed reverse-circulation drilling (2142 m in 24 holes) on its Canadian Creek copper-gold project, sandwiched between the Coffee and Casino properties. The drill program tested a multi-kilometre soil geochemical anomaly. Many of the holes returned low-grade gold intersections. The most significant intersection returned 4.46 g/t Au over 1.52 m at the Kana target in hole CCRC17-23. The company also carried out ground geophysics and infill soil sampling within a multi-kilometre long gold-arsenic ± antimony geochemical anomaly.

Newcomer Benz Mining Corp. ([www.benzmining.com](http://www.benzmining.com)) worked the **Mel** property in southeastern Yukon, performing trenching and diamond drilling. Benz Mining Corp. acquired the strata-bound zinc-lead-barite property in March, 2017 (Fig. 20). The work program for the season included infill diamond drilling (nine drillholes, 2114 m) at the Mel Main zone and mapping, excavator trenching and a metallurgical study. Drilling highlights include 6.0% Zn, 0.1% Pb, 1.1 g/t Ag over 5.65 m in hole MEL-17-052 and 12.90 m of 8.45% Zn and 0.26% Pb in hole MEL-17-058.

Strategic Metals ([www.strategicmetalsltd.com](http://www.strategicmetalsltd.com)) conducted modest programs on 11 of its properties, including the **Vault** in southwestern Yukon where impressive gold-in-soil anomalies up to 10000 ppb were returned. At the copper-silver Saloon prospect, in south-central Yukon, which was drilled for the first time in 2016, geochemical

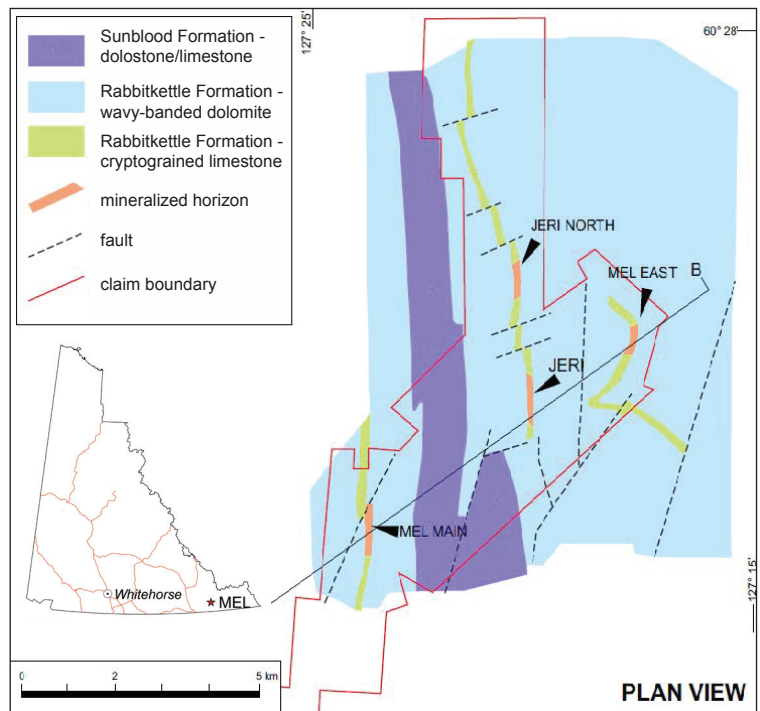


**Figure 19.** Stacks of historic core at the Macmillan Pass project of Fireweed Zinc. Photo: Yukon government.

surveys expanded the soil anomaly to 1.8 km along trend. At **Meloy**, in west-central Yukon, sampling and mapping has outlined a porphyry target with high copper-in-soil values (up to 4520 ppm) within a 7 by 3 km area. Rock sampling returned up to 8.7% Cu, 560 g/t Ag, 1.47% Mo, 1.06 g/t Au, 3.51% WO<sub>3</sub> and more than 1% Zn. **Sawbuck**, a new silver occurrence in central Yukon near Keno Hill, returned rock values from 105 to 3160 g/t Ag.

The original exploration plan at the **Blende** lead-zinc-silver Mississippi Valley-type property was scaled back. Blind Creek Resources Ltd. ([www.blindcreekresources.com](http://www.blindcreekresources.com)) completed a short program of sampling historic drill core for metallurgical studies at this property in central Yukon.

For further up-to-date information on all 2017 projects, please see the online Exploration Activity ArcGIS map at <http://yukon2.maps.arcgis.com/home/index.html>.



**Figure 20.** Geological map of Benz Mining Corp.'s Mel property, modified from graphic accessed from Benz Mining December 11, 2017.

## APPENDIX 1. EXPLORATION PROJECTS 2017

Project	Owner/Optioner	Yukon MINFILE	Commodity	Deposit type	Level of Advancement
2K Gold	Provenance Gold Corp.	115N024	Gold	vein/breccia	grassroots - never drilled
3 Aces	Golden Predator Mining Corp.	105H066	Gold	vein/breccia	diamond drilled
Anderson Gold Trend	Mayo Lake Minerals	-	Gold	vein/breccia	R/C drilled
Aurex-McQuesten	Banyan Gold Corp.	105M060	Gold	skarn/replacement	diamond drilled
Ballarat	Stakeholder Gold Corp.	115J061	Gold	porphyry/sheeted vein	diamond drilled
Barker	White Gold Corp.	-	Gold	unclassified	grassroots - never drilled
Bent	Richards, Gord	-	Copper	unclassified	grassroots - never drilled
Birmingham	Alexco Resource Corp.	105M086	Silver	vein/breccia	43-101 defined deposit
Betty	White Gold Corp.	115J070, 074	Gold	vein/breccia	R/C drilled
Black (Tombstone)	Strategic Metals Ltd.	-	Gold	vein/breccia	grassroots - never drilled
Black Hills	White Gold Corp.	-	Gold	vein/breccia	grassroots - never drilled
Blende	Blind Creek Resources Ltd.	106D064	Zinc-Lead	Mississippi Valley-type	43-101 defined deposit
Bonanza	White Gold Corp.	-	Gold	unclassified	grassroots - never drilled
Boulevard	Independence Gold Corp.	115J050	Gold	porphyry/sheeted vein	diamond drilled
Bulls Eye	Goldstrike Resources Ltd.	-	Gold	unclassified	grassroots - never drilled
Canadian Creek	Cariboo Rose Resources Ltd.	115J101	Copper	multiple	diamond drilled
Carmacks Copper	Copper North Mining Corp.	115I008	Copper	porphyry/sheeted vein	43-101 defined deposit
Carmacks	Prior, Glen	-	Gold	vein/breccia	grassroots - never drilled
Catalyst	Group Ten Metals Inc.		Nickel-PGE	mafic/ultramafic associated	grassroots - never drilled
Clear Creek	Kestrel Gold Inc.	115P023	Gold	vein/breccia	diamond drilled
Cliff	Berdahl, Scott	-	Gold	unclassified	grassroots - never drilled
Coffee	Goldcorp Inc.	115J110, 111	Gold	vein/breccia	43-101 defined deposit
Copper	White Gold Corp.	-	Gold	unclassified	grassroots - never drilled
Dabb	Strategic Metals Ltd.	-	Gold	unclassified	grassroots - never drilled

## APPENDIX 1 (continued). EXPLORATION PROJECTS 2017

Project	Owner/Optioner	Yukon MINFILE	Commodity	Deposit type	Level of Advancement
Dan Man	Arcus Development Group Inc.	115J112	Gold	vein/breccia	diamond drilled
Dime	White Gold Corp.	-	Gold	vein/breccia	RAB drilled
Dublin Gulch (Eagle)	Victoria Gold Corp.	106D025	Gold	porphyry/sheeted vein	mine development
Eureka	Trifecta Gold Ltd.	115O057	Gold	vein/breccia	diamond drilled
Eureka Dome	Pacific Ridge Exploration Ltd.	-	Gold	vein/breccia	grassroots - never drilled
Expo	Berdahl, Ron	-	Zinc-Lead	volcanic associated	grassroots - never drilled
Flume/Storck	K2 Gold Corp.	115N110	Gold	skarn/replacement	diamond drilled
Freegold Mountain	Triumph Gold Corp.	105I042, 058, 107	Gold	multiple	43-101 defined deposits
Gladman	Mann, Bill	-	Gold	unclassified	grassroots - never drilled
Gold Source	Goldstrike Resources Ltd.	-	Gold	unclassified	grassroots - never drilled
Golden Culvert	Stratabound Minerals Corp.	105H067	Gold	vein/breccia	grassroots - never drilled
Golden-Oly	Strikepoint Gold Inc.	-	Gold	porphyry/sheeted vein	grassroots - never drilled
Goodman	Nevada Zinc Corp.	106C025	Gold	vein/breccia	grassroots - never drilled
Grabben Gold	Kreft, Bernie	-	Gold	unclassified	grassroots - never drilled
Grew Creek	Quantum Cobalt Corp.	105K009	Gold	vein/breccia	43-101 defined deposit
Ham (Tombstone)	Strategic Metals Ltd.	-	Gold	unclassified	grassroots - never drilled
Hartless Joe	Strategic Metals Ltd.	105D203	Gold	volcanic associated	grassroots - never drilled
Hayes	White Gold Corp.	-	Gold	unclassified	grassroots - never drilled
Henderson	Independence Gold Corp.	-	Gold	vein/breccia	RAB drilled
Hess	Anthill Resources Ltd.	-	Gold	unclassified	grassroots - never drilled
Hess River	Bluenose Gold Corp.	-	Gold	unclassified	grassroots - never drilled
Hotspot	Goldstrike Resources Ltd.	-	Gold	unclassified	grassroots - never drilled
Hunker	White Gold Corp.	-	Gold	unclassified	grassroots - never drilled
Hyland Gold	Banyan Gold Corp.	095D011	Gold	vein/breccia	43-101 defined deposit

## APPENDIX 1 (continued). EXPLORATION PROJECTS 2017

Project	Owner/Optioner	Yukon MINFILE	Commodity	Deposit type	Level of Advancement
Ike	Argus Metals Corp.	-	Gold	sediment associated	grassroots - never drilled
Ind	White Gold Corp.	-	Gold	porphyry/sheeted vein	diamond drilled
JP Ross	White Gold Corp.	-	Gold	vein/breccia	diamond drilled
Justin	Aben Resources Ltd.	105H035	Gold	vein/breccia	diamond drilled
Kamatash	AKG Exploration Inc.	-	Jade	mafic/ultramafic associated	grassroots - never drilled
Keno Silver	Metallic Minerals Corp.	-	Silver	vein/breccia	diamond drilled
King Solomon	Kestrel Gold Inc.	-	Gold	vein/breccia	diamond drilled
Kings Ransom	Goldstrike Resources Ltd.	-	Gold	unclassified	grassroots - never drilled
Klaza	Rockhaven Resources Ltd.	115I067	Gold	vein/breccia	43-101 defined deposit
Klondike Goldfields (Lone Star)	Klondike Gold Corp.	115O072	Gold	vein/breccia	43-101 defined deposit
Kluane properties (Sapphire, Kilo, Agate, Garnet/Topaz, Pluto)	Strikepoint Gold Inc.	-	Gold	unclassified	grassroots - never drilled
Kryptos	Mieras, Jeff	-	Gold	vein/breccia	grassroots - never drilled
Kudz Ze Kayah	BMC Minerals	105G117	Zinc-Lead	volcanic associated	43-101 defined deposit
Ladue	K2 Gold Corp.	-	Gold	unclassified	grassroots - never drilled
Lance	Territory Metals Corp.	105N009	Gold	vein/breccia	grassroots - never drilled
Lanlo	Territory Metals Corp.	-	Gold	unclassified	grassroots - never drilled
Leota	Goldbank Mining Corp.	115O074	Gold	vein/breccia	grassroots - never drilled
Line	White Gold Corp.	-	Gold	vein/breccia	grassroots - never drilled
Lois	Territory Metals Corp.	-	Gold	vein/breccia	grassroots - never drilled
Loonie	White Gold Corp.	-	Gold	vein/breccia	diamond drilled
Lucky Joe	Taku Gold Corp.	115O051	Copper	porphyry/sheeted vein	diamond drilled
Lucky Strike	Goldstrike Resources Ltd.	-	Gold	vein/breccia	diamond drilled
Luxor (Sheba, Ophir, Hav)	Eureka Resources Inc.	-	Gold	vein/breccia	grassroots - never drilled
Mahtin	Strikepoint Gold Inc	115P007	Gold	vein/breccia	diamond drilled

## APPENDIX 1 (continued). EXPLORATION PROJECTS 2017

Project	Owner/Optioner	Yukon MINFILE	Commodity	Deposit type	Level of Advancement
Mariposa	Four Nines Gold Inc.	115O075	Gold	vein/breccia	diamond drilled
Mars	Strategic Metals Ltd.	-	Gold	vein/breccia	diamond drilled
May/Qu	Strikepoint Gold Inc.	-	Gold	vein/breccia	diamond drilled
McConnell's Jest	Zonte Metals Inc.	106D055	Gold	porphyry/sheeted vein	diamond drilled
McKay Hill	Metallic Minerals Corp.	-	Silver	vein/breccia	diamond drilled
McQ	Ryan, Shawn	-	Gold	unclassified	grassroots - never drilled
McQ (Taku)	Taku Gold Corp.	-	Gold	unclassified	grassroots - never drilled
Mel	Benz Mining Corp.	095D005	Zinc-Lead	sediment associated	43-101 defined deposit
Meloy	Strategic Metals Ltd.	115G070, 071	Copper	porphyry/sheeted vein	grassroots - never drilled
Michelle	Silver Range Resources Ltd.	116A016	Zinc-Lead	sediment associated	diamond drilled
Midas Touch	Strategic Metals Ltd.	-	Gold	sediment associated	diamond drilled
Miller Creek	Hulstein, Roger	-	Gold	unclassified	grassroots - never drilled
Miller Creek/Wy Gulch	Murtagh, Jayce	-	Gold	unclassified	grassroots - never drilled
Moosehorn	Independence Gold Corp.	-	Gold	vein/breccia	grassroots - never drilled
Moosehorn	Provenance Gold Corp.	115N024	Gold	vein/breccia	diamond drilled
Mount Anderson	Apex Resources Inc.	105D029	Gold	vein/breccia	grassroots - never drilled
Osiris	ATAC Resources Ltd.	106C045	Gold	sediment associated	diamond drilled
North Rackla	Cantex Mine Development Corp.	106C108	Gold	volcanic associated	diamond drilled
Ogi	Pacific Ridge Exploration Ltd.	116B165	Zinc-Lead	sediment associated	grassroots - never drilled
Orion	Barrick Gold Corp.	-	Gold	sediment associated	diamond drilled
ORTRA	Kreft, Bernie	-	Gold	unclassified	grassroots - never drilled
PDM	Strikepoint Gold Inc.	-	Gold	porphyry/sheeted vein	grassroots - never drilled
Pedlar	White Gold Corp.	-	Gold	unclassified	grassroots - never drilled
Pilot	White Gold Corp.	-	Gold	unclassified	grassroots - never drilled
Plateau	Goldstrike Resources Ltd.	105N034, 035, 036	Gold	vein/breccia	diamond drilled

## APPENDIX 1 (continued). EXPLORATION PROJECTS 2017

Project	Owner/Optioner	Yukon MINFILE	Commodity	Deposit type	Level of Advancement
Pluto	Strikepoint Gold Inc.	-	Gold	skarn/replacement	RAB drilled
Queen	Strategic Metals Ltd.	-	Gold	unclassified	grassroots - never drilled
QV	Comstock Metals Ltd.	115O004	Gold	vein/breccia	43-101 defined deposit
Rau (Tiger)	ATAC Resources Ltd.	106D005	Gold	skarn/replacement	43-101 defined deposit
Rawgeef	Bachynski, Ryan	-	Gold	unclassified	grassroots - never drilled
RC	Pacific Ridge Exploration Ltd.	-	Gold	porphyry/sheeted vein	grassroots - never drilled
Red Ridge	Apex Resources Inc.	105D100	Gold	porphyry/sheeted vein	grassroots - never drilled
Rice	White Gold Corp.	-	Gold	unclassified	grassroots - never drilled
Rod	Strategic Metals Ltd.	-	Gold	vein/breccia	diamond drilled
Rosebute	Taku Gold Corp.	115O179	Gold	vein/breccia	diamond drilled
Rosy	ATAC Resources Ltd.	-	Gold	vein/breccia	diamond drilled
Rude Creek Gold	0890763 B.C. Ltd.	115J022	Gold	vein/breccia	grassroots - never drilled
Saloon	Strategic Metals Ltd.	105E003	Copper-Silver-Gold	vein/breccia	diamond drilled
Samp	Kluane Drilling Ltd.	-	Gold	vein/breccia	grassroots - never drilled
Sawbuck	Strategic Metals Ltd.	-	Silver	vein/breccia	grassroots - never drilled
Severance	Triumph Gold Corp.	-	Gold	porphyry/sheeted vein	grassroots - never drilled
Sheba	Eureka Resources Inc.	-	Gold	vein/breccia	grassroots - never drilled
Silver Hart	CMC Metals Ltd.	105B021	Silver	vein/breccia	43-101 defined deposit
Sixty Mile	White Gold Corp.	-	Gold	vein/breccia	grassroots - never drilled
Spy	Group Ten Metals Inc.	-	Nickel-PGE	volcanic associated	grassroots - never drilled
Sulphur	Taku Gold Corp.	-	Gold	vein/breccia	diamond drilled
Tad/Toro	Triumph Gold Corp.	115I031	Copper	porphyry/sheeted vein	diamond drilled
Tak	Eureka Resources Inc.	-	Gold	unclassified	grassroots - never drilled
Tobi	Group Ten Metals Inc.	-	Nickel-PGE	mafic/ultramafic associated	grassroots - never drilled
Tom/Jason	Fireweed Zinc Ltd.	105O001, 019	Zinc-Lead	sediment associated	43-101 defined deposit

## APPENDIX 1 (continued). EXPLORATION PROJECTS 2017

Project	Owner/Optioner	Yukon MINFILE	Commodity	Deposit type	Level of Advancement
Toonie	White Gold Corp.	-	Gold	unclassified	grassroots - never drilled
Touleary	Arcus Development Group Inc.	115O 176	Gold	volcanic associated	diamond drilled
Treble	Trifecta Gold Ltd.	-	Gold	vein/breccia	diamond drilled
Trident	Trifecta Gold Ltd.	-	Gold	unclassified	grassroots - never drilled
Triple Crown (OOO)	Trifecta Gold Ltd.	115J005	Gold	vein/breccia	grassroots - never drilled
Ultra	Group Ten Metals Inc.		Nickel-PGE	mafic/ultramafic associated	grassroots - never drilled
Val-Jual	Kestrel Gold Inc.	-	Gold	vein/breccia	diamond drilled
Van Gogh East	Van Kirchbaum, Everett	-	Gold	unclassified	grassroots - never drilled
Vault	Strategic Metals Ltd.	-	Gold	vein/breccia	grassroots - never drilled
VIP	Generic Gold Corp.	-	Gold	vein/breccia	grassroots - never drilled
Wellgreen	Wellgreen Platinum Ltd.	115G024	Nickel-PGE	mafic/ultramafic associated	43-101 defined deposit
Wells	White Gold Corp.	-	Gold	porphyry/sheeted vein	grassroots - never drilled
Wels Gold	K2 Gold Corp.	115J039	Gold	porphyry/sheeted vein	diamond drilled
White Gold (Golden Saddle/Arc)	White Gold Corp.	115O 165, 166	Gold	vein/breccia	43-101 defined deposit
Wolf	White Gold Corp.	-	Gold	unclassified	grassroots - never drilled

## APPENDIX 2. DRILLING STATISTICS BY PROJECT, 2017

Property	Optioner/Owner	# of drill holes	# of metres
<b>Diamond Drilling</b>			
2K Gold	Provenance Gold Corp.	13	1836
Aurex	Banyan Gold Corp.	10	1422
Birmingham	Alexco Resource Corp.	37	13 832
Boulevard	Independence Gold Corp.	9	978
Canadian Creek	Cariboo Rose Resources Ltd.	24	2142
Carmacks Copper	Copper North Mining Corp.	32	4000
Coffee Project	Goldcorp Inc.	74	17 698
Dublin Gulch (Eagle)	Victoria Gold Corp.	205	33 650
Freegold Mountain Project	Triumph Gold Corp.	35	12 904
Hyland Gold	Banyan Gold Corp.	25	4000
Keno-Lightning	Metallic Minerals Corp.	14	1320
Kudz Ze Kayah	BMC Minerals	19	4235
Lone Star	Klondike Gold Corp.	70	8620
Lucky Strike	Goldstrike Resources Ltd.	9	1033
McConnell's Jest	Zonte Metals Inc.	5	1027
Mel	Benz Mining Corp.	9	2114
Nadaleen Trend	ATAC Resources Ltd.	29	11 214
Plateau	Goldstrike Resources Ltd.	23	2972
QV	Comstock Metals Ltd.	6	904
Silver Hart	CMC Metals Ltd.	14	843
Tiger	ATAC Resources Ltd.	12	1371
Trident	Trifecta Gold Ltd.	5	547
Wellgreen	Wellgreen Platinum Ltd.	15	2720
Wels Gold	K2 Gold Corp.	11	1232
White Gold	White Gold Corp.	4	1295

## APPENDIX 2 (continued). DRILLING STATISTICS BY PROJECT, 2017

Property	Optioner/Owner	# of drill holes	# of metres
<b>Rotary Air Blast/Reverse Circulation</b>			
3 Aces	Golden Predator Mining Corp.	190	17 510
Anderson Gold	Mayo Lake Minerals	8	650
Coffee Project	Goldcorp Inc.	528	50 813
Dan Man	Arcus Development Group Inc.	20	2880
Dime	White Gold Corp.	24	1898
JP Ross	White Gold Corp.	14	905
Kluane properties	Strikepoint Gold Inc.	12	1294
Kudz Ze Kayah	BMC Minerals	25	616
Loonie	White Gold Corp.	30	1970
Mahtin	Strikepoint Gold Inc.	6	630
May/Qu	Strikepoint Gold Inc	3	300
Orion	Barrick Gold Corp	32	1535
Val-Jual	Kestrel Gold Inc.	13	922
White Gold	White Gold Corp	31	4432

## REFERENCES

Yukon MINFILE, 2017. Yukon MINFILE - A database of mineral occurrences. Yukon Geological Survey, <<http://data.geology.gov.yk.ca>> [accessed December 14, 2017].

