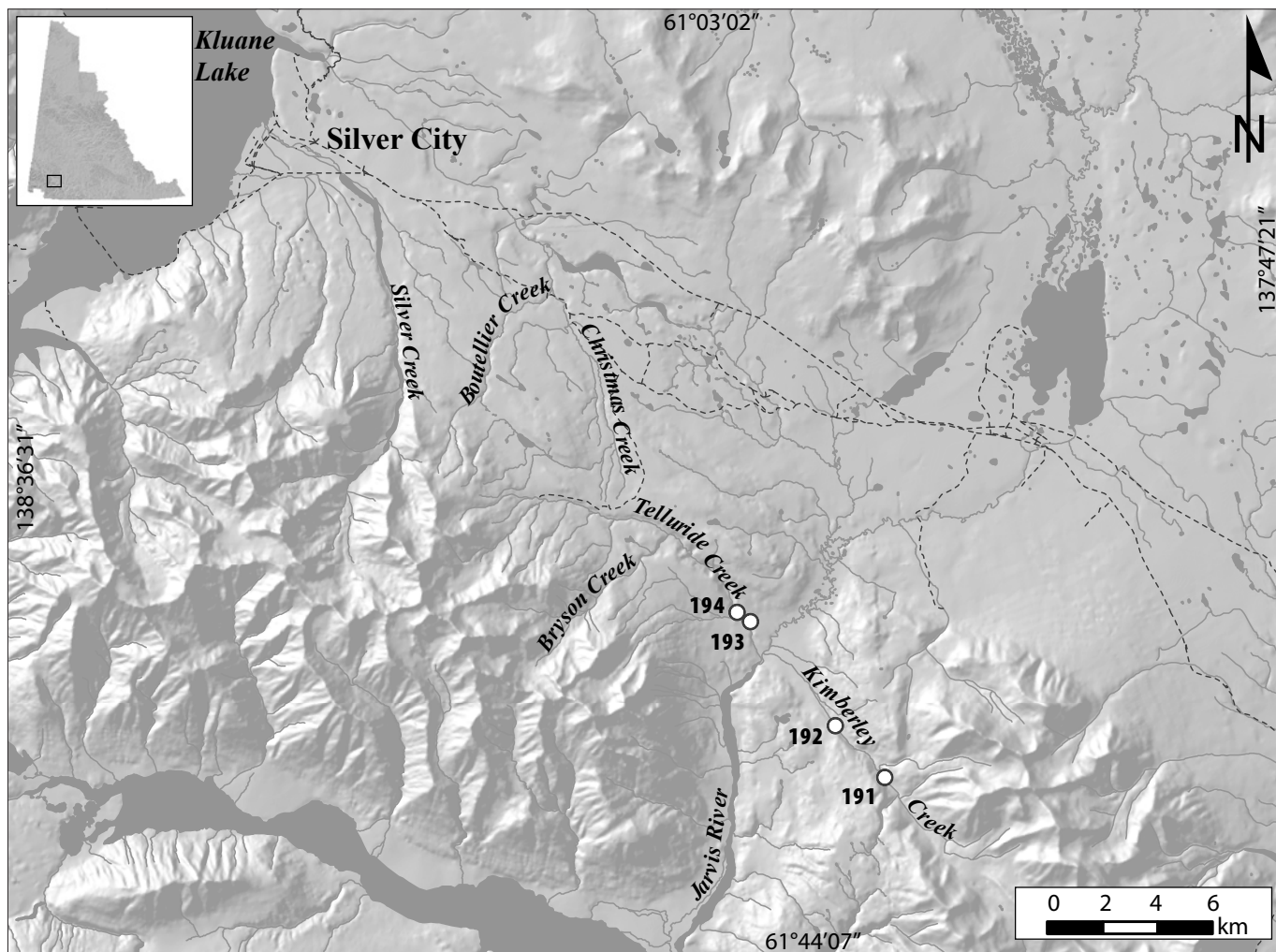


# KIMBERLEY PLACER AREA

SITES  
191-194



## LEGEND

- 191.....Keller and Marty
- 192.....Sawyer
- 193.....Dulac
- 194.....Burton

**KIMBERLEY CREEK, a tributary of Jarvis River**

115A/13

2005: 60°49'00"N, 137°59'59"W

**Hanspeter Keller, Josef Marty**

Water license: PM04-442 (2015)

Active producer (2004-2006)

**Operation no. 191**

**LOCATION** This operation was located on Kimberley Creek upstream of Sawyer's operation.

**WORK HISTORY AND MINING CUTS** In 2004, one person hand mined and conducted limited testing with equipment. In 2005, a crew of two miners worked a daily 8-hour shift to mine four cuts; 235 by 30 by 14 feet (3655 cubic yards) (70 x 10 x 4 m; 2800 m<sup>3</sup>), 125 by 10 by 14 feet (648 cubic yards) (40 x 3.5 x 4 m; 495 m<sup>3</sup>), 25 by 10 by 14 feet (130 cubic yards) (8 x 3 x 4 m; 100 m<sup>3</sup>), and 20 by 10 by 14 feet (104 cubic yards) (6 x 3 x 4 m; 80 m<sup>3</sup>). In 2006, the operator worked on the right limit in the area of the access road.

**EQUIPMENT AND WATER TREATMENT** In 2004, a Caterpillar 931 backhoe was used to construct settling ponds and conduct limited testing. In 2005, a Link-belt 210 excavator was added and both machines were used for stripping and excavating. The recovery system consisted of a trommel and a jig. Water was pumped by a gas-powered Honda supplying 330 igpm, enough to process 20 loose cubic yards per hour. Water was



*Keller and Marty's mining pits on Kimberley Creek, 2005.*

supplied from Kimberley Creek and effluent was settled out-of-stream. In 2006, the operation employed four settling ponds with no discharge.

**SURFICIAL GEOLOGY AND STRATIGRAPHY** The section encountered was up to 14 feet (4 m) thick to bedrock, and contained gravel with abundant clay. The lower 2 feet (0.6 m) of gravel on bedrock was sluiced.

**GOLD CHARACTERISTICS** Gold consisted of smooth, dull nuggets weighing up to 0.19 oz (6 g).

**KIMBERLEY CREEK, a tributary of Jarvis River**

115B/16

2005: 60°50'03"N, 138°01'52"W

**Pat Sawyer, Claire Sawyer**

Water licenses: PM04-457 (2010), PM96-063 (2007)

Active producer (2003-2006)

**Operation no. 192**

**LOCATION** The property was located on Kimberley Creek, approximately 2 miles (3 km) above its confluence with the Jarvis River.

**WORK HISTORY AND MINING CUTS** The Sawyers began mining on Kimberley Creek in 1980, and have been back every year since. In 2003, they mined two cuts. The first was 768 cubic yards (587 m<sup>3</sup>). The second, east bench cut, was 3500 cubic yards (2700 m<sup>3</sup>). In 2004, three cuts were mined from both the east and west benches. One cut was 960 cubic yards (730 m<sup>3</sup>), another was 768 cubic yards (587 m<sup>3</sup>) and the final was 864 cubic yards (660 m<sup>3</sup>). In 2005, two cuts totalling 2300 cubic yards (1800 m<sup>3</sup>) were mined, one on the valley bottom and one on the bench. In 2006, the operation was set up on the right limit of Kimberley Creek, across from the 2005 site. Between June and August, the operation returned to the left limit.

**EQUIPMENT AND WATER TREATMENT** Equipment consisted of a Link-belt 5400 excavator for stripping, stockpiling and feeding the plant, and a Caterpillar D6 bulldozer for pushing tailings, building roads and ramps. The wash plant was a 4- by 14-foot trommel with a 3- by 30-foot stacker, with 4 feet of ¾-inch openings on the screen that fed into a 2-compartment jig. Water was supplied from a groundwater sump and direct from a pocket in the river bank, and pumped by a 4-cylinder engine powered by a 5- by 4-inch AC pump at a rate of 350 igpm. Approximately 40 loose cubic yards of material was processed per hour. Tailings were directed back into the mine cut. Clean-ups were done with a clean-up jig, which reduced the concentrate from the plant jigs.

**SURFICIAL GEOLOGY AND STRATIGRAPHY** The section consisted of 4 feet to 10 feet (1 to 3 m) of loose gravel overburden overlying a lower thawed gravel layer with heavy clay content. From



*Claire and Pat Sawyer's mining operation on Kimberley Creek, 2003.*

6 inches to 4 feet (0.2 to 1 m) of the lower gravel were sluiced along with 1½ feet (0.5 m) of bedrock.

**BEDROCK GEOLOGY** Bedrock is mapped as Pennsylvanian to lower Permian volcanic rocks overlain by conglomerate and minor limestone, as well as Miocene to Pliocene and younger Wrangell lavas.

**GOLD CHARACTERISTICS** The gold was reported as large, flat and smooth from the bench, but coarse and rough from the valley bottom. The gold was 20% minus 1 dwt. (1.6 g) with the remaining 80% comprised of nuggets up to 15 dwt. (23 g). The fineness was 860. Some platinum was reported in clean-ups.

#### **TELLURIDE CREEK, a tributary of Jarvis River**

115B/16

2003: 60°52'09"N, 138°05'20"W

**Marcel Dulac**

Water license: S3WR001 (2003)

Active producer (2003)

**Operation no. 193**

**LOCATION** This operation was located on Telluride Creek approximately 2 miles (3 km) from the confluence with the Jarvis River.

**WORK HISTORY AND MINING CUTS** In 2003, a crew of three miners worked a daily 8-hour shift to process six cuts. The first four cuts were each 30 feet wide, 60 feet long and 6 feet deep (10 x 20 x 2 m). The second two cuts were each 30 by 30 by 6 feet (10 x 10 x 2 m).

**EQUIPMENT AND WATER TREATMENT** Equipment used in the program included a Case 125B loader and a Caterpillar D7E bulldozer. The wash plant consisted of a dump box and grizzly feeding a 2- by 20-foot single sluice run with 1-inch angle iron riffles and expanded metal. Water was supplied

by a 4-inch pump which allowed the plant to process 25 loose cubic yards per hour. Water was acquired from two 100% recirculated out-of-stream settling ponds (each 10 yards square and 3 yards [8 m<sup>2</sup> x 3 m] deep) which were supplemented by groundwater seep. Clean-ups were done with a long tom and gold wheel.

**SURFICIAL GEOLOGY AND STRATIGRAPHY** The section consisted of coarse-grained valley bottom gravel. The depth to bedrock varied from 8 feet (2 m) in the valley to 4 feet (1 m) in the canyon. The bottom 4 feet (1 m) of gravel plus 1 foot (0.3 m) of bedrock was sluiced.

**GOLD CHARACTERISTICS** The gold was mostly bright, fine and smooth, with a few nuggets weighing up to 0.2 oz (5 g). Fineness was not known.

**TELLURIDE CREEK, a tributary of Jarvis River**

115B/16

2003: 60°52'22"N, 138°05'37"W

**William Robert Burton**

Water license: PM99-035 (2009)

Active producer (2003)

**Operation no. 194**

**LOCATION** The operation was located on the lower reaches of Telluride Creek.

**WORK HISTORY AND MINING CUTS** Approximately 100 cubic yards (80 m<sup>3</sup>) of material was processed in 2003.

**BEDROCK GEOLOGY** Bedrock is mapped as various volcanic rocks, breccia, limestone, conglomerate and phyllite.



*Burton's test operation on Telluride Creek, 2005*